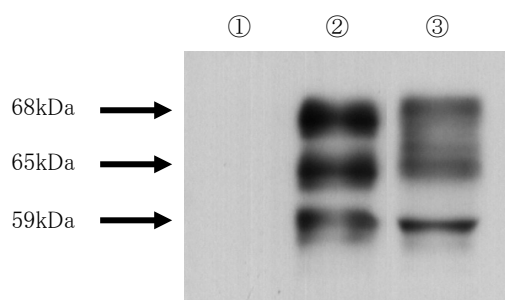




## Anti Human Tau Phospho-Specific (Ser416) Polyclonal Antibody

Package Size	25 $\mu$ g (100 $\mu$ L / vial)
Format	Rabbit polyclonal antibody 0.25mg/mL
Buffer	PBS [containing 2% Block Ace as a stabilizer, 0.1% Proclin as a bacteriostat]
Storage	Store below -20°C
Purification method	Once thawed, store at 4°C. Repeated freeze-thaw cycles should be avoided. This antibody was purified from rabbit serum immunized with partial peptide of human Tau Phospho-Specific (Ser416) by phosphorylated peptide affinity column. And then, the antibody against unphosphorylated peptide was removed by unphosphorylated peptide affinity column.
Working dilution	For western blotting ; 0.5~2 $\mu$ g/mL



### Western blotting

Sample :

- ① Rat brain homogenates 7  $\mu$ g

The sample was prepared in the absence of phosphatase inhibitor.

- ② Rat brain homogenates 7  $\mu$ g

The sample was prepared in the presence of phosphatase inhibitor

- ③ Rat brain homogenates 30  $\mu$ g

The sample was prepared in the absence of phosphatase inhibitor, and then it was phosphorylated by CaM kinase II

### Preparation of antibodies and instruction :

Yamamoto H

Department of Molecular Pharmacology,

Kumamoto University Graduate school of Medical Science



## **Anti Human Tau Phospho-Specific (Ser416) Polyclonal Antibody**

### **【Reference】**

1. Yamamoto H. et al. : J Neurochem. 1983 Oct;41(4):1119-25
2. Yamamoto H. et al. : Arch Biochem Biophys. 2002 Dec 15;408(2):255-62

#### **Manufacturer**



**Medicinal Chemistry Pharmaceutical Co., Ltd.**

#### **Kobe Research Institute**

7-1-14 Minatojimaminami-machi, Chuo-ku, Kobe, Japan 650-0047

Telephone: +81-78-945-7075 FAX: +81-78-306-0694

URL: <https://soyaku.co.jp/english/> tech-kobe@soyaku.co.jp

#### **Previous manufacturer**



**Trans Genic Inc.**