

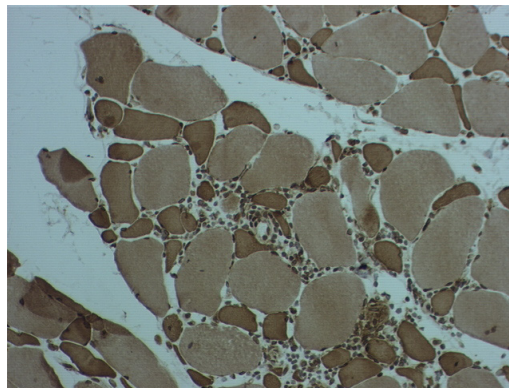


Anti Human Chemokine-like factor 1 Polyclonal Antibody

Chemokine is a member of cytokines (interleukin, interferon etc.) and is known to activate chemokinesis of leukocytes. Chemokine-like factor 1 (CKLF1) is a novel chemokine and expressed on various types of tissue. It may play a role of chemokinetic induction on neutrophils, monocytes and lymphocytes. And CKLF1 is thought to be involved in reproduction of skeletal muscle cell.

The antibody was established from the purified serum immunized with partial peptide of human CKLF1. It is useful for immunochemical detection of CKLF 1.

Package Size	25 μ g (100 μ L/vial)
Format	Rabbit polyclonal antibody 0.25mg/mL
Buffer	PBS [containing 2% Block Ace as a stabilizer, 0.1% Proclin as a bacteriostat]
Storage	Below -20°C
Purification method	This antibody was purified from rabbit serum by affinity chromatography.
Working dilution	For Immunohistochemistry ; 1~10 μ g/mL



Immunohistochemistry

Sample : biopsied muscle of a patient with multiple myositis

Preparation of antibodies and instruction :

Drs. Kobayashi S. and Nagai A. at Department of Internal Medicine III,
Shimane Medical University



Anti Human Chemokine-like factor 1 Polyclonal Antibody

【Reference】

1. Han W. et al. : Biochem J. 2001 Jul 1;357(Pt1):127-35
2. Lou Y. et al. : Gene. 2003 Mar 27;307:125-32

Manufacturer



Medicinal Chemistry Pharmaceutical Co., Ltd.

Kobe Research Institute

7-1-14 Minatojimaminami-machi, Chuo-ku, Kobe, Japan 650-0047

Telephone: +81-78-945-7075 FAX: +81-78-306-0694

URL: <https://soyaku.co.jp/english/> tech-kobe@soyaku.co.jp

Previous manufacturer



Trans Genic Inc.