



Purpose of use

CASMATCH is a standard color chart that is used to adjust tones and sizes of color images to a certain level when affected parts of the body are recorded in color.

By using CASMATCH in combination with image editing software Adobe Photoshop 7.0, photographs that were taken in various situations can be adjusted so that their color tones and sizes will look closer to actual images of subjects, thus facilitating comparative studies of cases.

CASMATCH will be useful for keeping records of clinical images and making presentations at academic conferences.

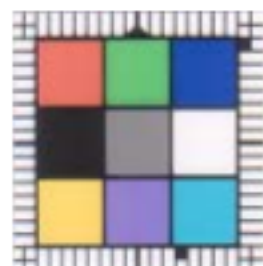
Features

- Makes it easy to keep tracks of changes in subject' s condition over time and course of treatment for the same subject.
- Facilitates comparisons and contrasts of photographs of different subjects that were taken under different conditions.
- Clearly reproduces subtle colors of affected areas that were difficult to reproduce by conventional methods.
- Adjusts colors of photographs that were taken under inadequate exposure conditions (underexposure or overexposure) and photographs with defective color tones, so that they will look closer to the actual colors of subjects.
- Usable as a measure for the sizes of affected areas because each sticker is graduated in millimeters.
- Adjusts variations of color tones due to differences in film manufacturer, processing laboratory, film scanner, digital camera, etc.
- Adjusts colors of old, discolored photographs.
- Makes image management easier because you can digitize photographs adjusting color tones to a certain level.

Usage

- How to do the shot

- (1) Peel CASMATCH off the backing, and place it near the affected area to be shot with the square mark of the graduations pointed upward, at an angle where the sticker will not reflect flash.
- (2) When flash is used, it should be suitable for the subject. (If convex parts of a subject or colors of the CASMATCH color chart are too light due to flash photography, it may not be possible to adjust color tones correctly.)



Comparison of different images

Because CASMATCH adjusts color tones and sizes to a certain level, you can make a sharp contrast between different images as shown below, even if the images differ from each other in subject, time, and shooting site.

Before adjustment



Adjustment of
color tones
Adjustment of
sizes



After adjustment

Before adjustment



Adjustment of
color tones
Adjustment of
sizes

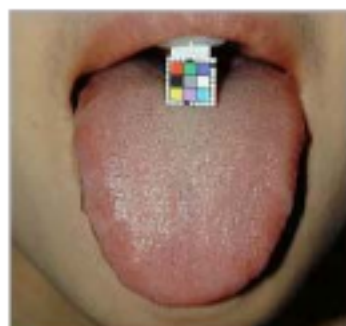


After adjustment

Wide range of application

If you use a digital camera, deterioration of images caused by intervening media can be reduced and relatively accurate adjustment of images can be made.

The possibilities of CASMATCH will expand infinitely as the needs of users diversify, such as the field of dentistry and tongue examination of traditional Chinese medicine.



Photographs offered by: Dr. Nakajo Motoo, Nakajo Dental Clinic

 **Funakoshi Co.,Ltd.**
9-7 Hongo 2-Chome
Bunkyo-ku, Tokyo, 113-0033
Japan

<http://www.funakoshi.co.jp>
Tel : +81-3-5684-6296
Fax : +81-3-5684-6597
E-mail : export@funakoshi.co.jp