

## Anti-Prion protein antibody, mouse monoclonal (2C5-5)

65-901 50 ug, 65-902 250 ug

Prion protein PrP is a membrane glycosylphosphatidylinositol(GPI) anchored glycoprotein highly expressed in neuron and glia cells as well as immune and reproductive cells. Mutations in the octapeptide repeat regions as well as elsewhere in this gene have been associated with neurodegenerative diseases such as Creutzfeldt Jakob disease, fatal familial insomnia, Gerstmann Straussler disease, Huntington disease like 1, and kuru. The infectious isoform of PrP<sup>C</sup>, known as PrP<sup>Sc</sup>, is able to convert normal PrP<sup>C</sup> proteins into the infectious isoform, which is insoluble amyloid aggregate, by changing their conformation (1).

Mature PrP protein in human consists of 209 amino acids. Several topological forms exist; one cell surface form anchored via glycolipid and two transmembrane forms, therefore multiple bands are observed in SDS-PAGE (Figure).

### Applications

1) Western blotting (~0.5 µg/ml) 2) ELISA (most suitable)

Other applications have not been tested.

**Immunogen:** Recombinant human PrP lacking GPI anchor expressed and purified from rabbit kidney cell line RK13

**Reactivity:** Reacts with human Prion but not with mouse Prion. Other species have not been tested.

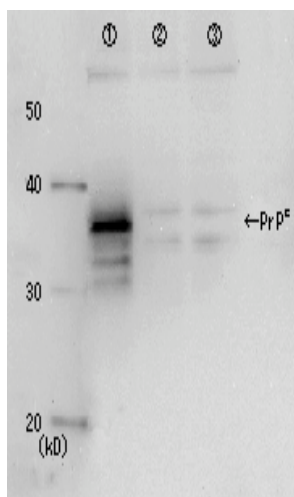
**Antibody:** Mouse monoclonal antibody, IgG1 (kappa). The hybridoma clone 2C5-5 was established in the laboratory of Prof. K. Ikuta at Osaka University.

**Form:** Purified IgG 1 mg/ml in PBS (-), 50% glycerol, filter-sterilized (azide-free)

**Storage:** Sent at 4°C or at -20°C and upon arrival, store at -20°C

**Data Link:** UniProtKB/Swiss-Prot [P04156](#) (PRIO\_HUMAN)

**Reference:** Sakudo A *et al* "Recent developments in prion disease research: diagnostic tools and in vitro cell culture models" *J Vet Med Sci* **69**:329-337 (2007) Review PMID: [17485919](#)



**Figure. Identification of Prion protein in crude cell extract by Western blotting using the monoclonal antibody 2C5-5.**

Lane 1: Extract of rabbit kidney cells RK13 over-expressing prion protein

Lane 2: Negative control; extract of the vector infected cells

Lane 3: Negative control; extract of RK13 cells

**Related Product:** [65-903](#) anti-Prion antibody, clone 7A1