

Anti-Hepatitis C Virus (HCV) core protein antibody, monoclonal (H6-29)

65-052 100 ug

Shipping and Storage: Ship at 4°C and store at -20°C. Do not freeze.

Reactivity: Reacts with human HCV core antigen, p21, of genotype 1b. Not tested in other genotypes

Immunogen: A part of the **core** region (nucleotides 369-704, amino acids 13-124) of **HCV genotype 1b** expressed in *E. coli* (the nucleotide sequence is shown in ref.1)

Applications

1. Western blotting (1/1,000~1/2,000)
2. Immunohistochemistry (1/100~1/500)
3. Immunofluorescence staining (1/100~1/500)
4. ELISA (assay dependent)

Isotype: Mouse IgG2a kappa

Form: Purified monoclonal antibody (IgG) 1mg/ml in PBS, 50% glycerol, filter-sterilized

Background: Hepatitis C virus (HCV) is a small (55-65 nm in size), enveloped, positive sense single-stranded RNA virus in the family *Flaviviridae* and the principal cause of parenteral non-A, non-B hepatitis. The virus genome consists of a single open reading frame of approximately 9,4 kb which encodes a single polyprotein of about 3,010 amino acids (1, 2, 3). The polyprotein is processed by host cell and viral proteases into four structural proteins (core, envelope1 and 2, and p7) and six non-structural proteins (NS2, 3, 4a, 4b, 5a, and 5b) necessary for viral replication. HCV core protein is not only a component of nucleocapsid but also has multiple functions and is thought to be a pathogenic factor for hepatitis. It also participates in some cellular processes, including transcriptional regulation and cellular transduction. HCV core antigen is used as diagnostic marker for HCV infection.

Data Link: UniProtKB:[P26662](#) ((POLG_HCVJA))

References: This antibody has been used in Publications 2 and 3. Ref 1 describes HCV clone used for immunogen production.

1. Takamizawa A *et al* (1991) "Structure and organization of the hepatitis C virus genome isolated from human carriers" *J Virol* **65**: 1105-1113 [PMID: 1847440](#)
2. Manabe S *et al* (1994) "Production of nonstructural proteins of hepatitis C virus requires a putative viral protease encoded by N3" *Virology* **198**: 636-644. [PMID: 8291245](#)
3. Hiramatsu N *et al* (1992) "Immunohistochemical detection of hepatitis C virus-infected hepatocytes in chronic liver disease with monoclonal antibodies to core, envelope and NS3 regions of the hepatitis C virus genome" *Hepatology* **16**: 306-311 [PMID: 1379209](#)

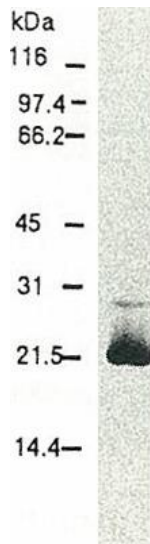


Fig.1 Western blotting of HCV core protein. Chimp liver cells were infected with recombinant vaccinia virus containing HCV genome cDNA and were subjected to Western blotting using this antibody. The core protein is detected as a 22-kDa band.

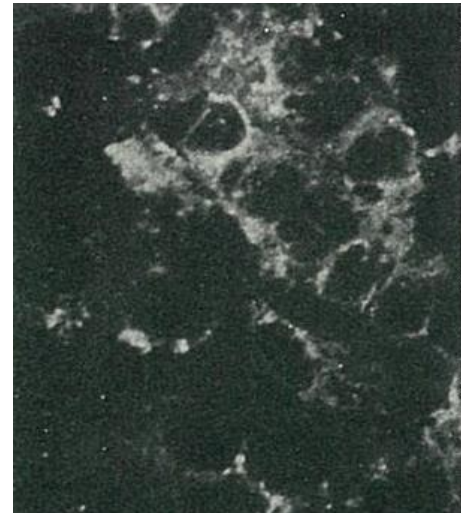


Fig.2 Detection of HCV core protein by immunofluorescence antibody staining. Chimp liver cells were infected with recombinant vaccinia virus containing HCV genome cDNA. After incubation for 48 hr, the cells were fixed with acetone and HCV core protein was detected by indirect immunofluorescence staining using this antibody.

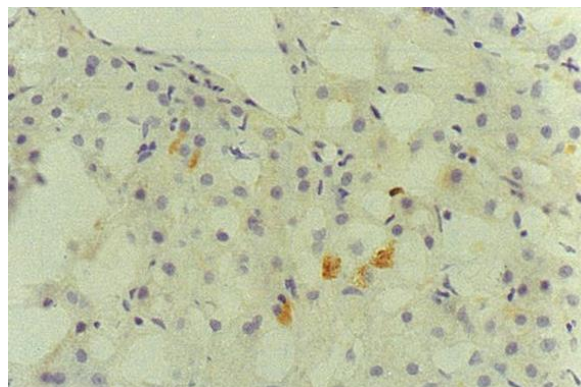


Fig.3 Immunohistochemical detection of HCV core protein. Tissue section from a patient with chronic hepatitis C was immunostained to reveal cells expressing HCV core antigen, which are scattered in the lobules (indirect immunohistochemical method, counterstained with Mayer's hematoxylin).

Related products:

[65-053](#) Anti-HCV core protein antibody, mouse monoclonal (H6-29), biotin conjugated

[65-054](#) Anti-HCV core protein antibody, mouse monoclonal (H6-29), FITC-conjugated

[65-057](#) Anti-HCV NS4a protein antibody, monoclonal (S4-13)

[65-058](#) Anti-HCV NS4a protein antibody, monoclonal (S4-13), biotin conjugated

[65-059](#) Anti-HCV NS4a protein antibody, mouse monoclonal (S4-13), FITC conjugated

[65-062](#) Anti-HCV NS5a protein antibody, mouse monoclonal (8926)

[65-063](#) Anti-HCV NS5a protein antibody, monoclonal (8926), Biotin conjugated

[65-064](#) Anti-HCV NS5a protein antibody, monoclonal (8926), FITC conjugated

[65-067](#) Anti-HCV NS5b protein antibody, mouse monoclonal (NS5B-6)

[65-068](#) Anti-HCV NS5b protein antibody, mouse monoclonal (NS5B-6), Biotin conjugated

[65-059](#) Anti-HCV NS5b protein antibody, mouse monoclonal (NS5B-6), FITC conjugated