

DNA Size Marker, 1 kbp Ladders (1-10 kbp), Ready to use

02-400, 250 ul

The BioAcademia 1 kb DNA Ladder is suitable for sizing linear double-stranded DNA fragments from 1 kbp to 10 kbp. The 4 kb band has increased intensity to provide internal orientation. The mass of DNA in each band is provided (assuming a 0.45 $\mu\text{g}/5 \mu\text{l}$ load) for approximate quantification in comparably intense samples of similar size.

DNA ladders: 1, 2, 3, 4, 5, 6, 8, 10 kbp (8 bands, see Figure below)

Concentration: 0.45 $\mu\text{g}/5 \mu\text{l}$

Recommended volume of application per lane: 5 μl

Solution: 10 mM Tris-HCl (pH 8.0), 1 mM EDTA, 0.015% bromophenol blue,
2.5% Ficoll-400, 0.017% SDS

Storage: For short period (~1 month) at 4°C, for longer period at -20°C

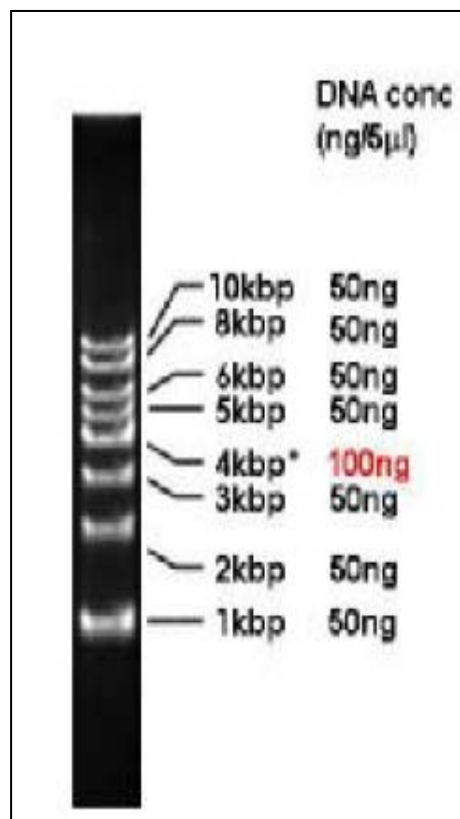


Figure. Electrophoretic pattern of 1 kbp DNA ladders on 1% agarose gel in TAE buffer. Five μl of the DNA ladder solution was applied.

Related Product : 02-420 DNA Size Marker, 100 bp Ladders (100-1,500 bp)