



ATCC® の神経細胞株

Web ページ番号

69162



Astrocytes (星状膠細胞)

*ATCC® No. : 商品コード

※保存温度: 液窒

[メーカー: ACC]

細胞名	細胞タイプ	由来	動物種	ATCC® No.*	包装/価格 (¥)
SVG p12	Astroglia, SV40 transformed	Brain	Human	CRL-8621 TM	1 ml / 122,000
C8-D1A	Astrocyte, type I clone	Brain (Cerebellum)	Mouse	CRL-2541 TM	1 ml / 110,000
C8-S	Astrocyte, type II clone	Brain (Cerebellum)	Mouse	CRL-2535 TM	1 ml / 122,000
C8-D30	Astrocyte, type III clone	Brain (Cerebellum)	Mouse	CRL-2534 TM	1 ml / 122,000
Swiss SFME	Astrocyte	Embryo	Mouse	CRL-9391 TM	1 ml / 122,000
CTX TNA2	Astrocyte, type 1 phenotype	Brain (Cortex)	Rat	CRL-2006 TM	1 ml / 122,000
DI TNC1	Astrocyte, type 1 phenotype	Brain (Diencephalon)	Rat	CRL-2005 TM	1 ml / 122,000
PG-4 (S+L-)	Astrocyte; Mo-MSV transformed	Brain	Cat	CRL-2032 TM	1 ml / 110,000

Brain endothelial cells and fibroblasts (脳内皮細胞と線維芽細胞)

※保存温度: 液窒

[メーカー: ACC]

細胞名	細胞タイプ	由来/疾患	動物種	ATCC® No.*	包装/価格 (¥)
HBEC-5i	Cerebral microvascular endothelium	Brain (Cerebral cortex)	Human	CRL-3245 TM	1 ml / 122,000
bEnd.3	Endothelial	Brain (Cerebral cortex) / Endothelioma	Mouse	CRL-2299 TM カルタヘナ	1 ml / 110,000
H19-7/IGF-IR	Fibroblast	Brain (Hippocampus)	Rat	CRL-2526 TM カルタヘナ	1 ml / 122,000

Eye/retinal cells (眼/網膜細胞)

※保存温度: 液窒

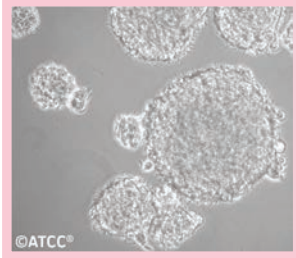
[メーカー: ACC]

細胞名	疾患	由来	動物種	ATCC® No.*	包装/価格 (¥)
WERI-Rb-1	Retinoblastoma	Eye (Retina)	Human	HTB-169 TM	1 ml / 110,000
Y79	Retinoblastoma	Eye (Retina)	Human	HTB-18 TM	1 ml / 110,000
ARPE-19	Normal	Eye (Retinal pigmented epithelium)	Human	CRL-2302 TM	1 ml / 110,000
RPE-J	Normal	Eye (Retinal pigmented epithelium)	Rat	CRL-2240 TM	1 ml / 122,000

GBM brain tumor stem cell lines (多形膠芽腫 GBM 由来脳腫瘍幹細胞株)

※保存温度: 液窒

[メーカー: ACC]



BT 67 (ATCC® CRL-3409TM)

細胞名	細胞タイプ	由来/疾患	動物種	ATCC® No.*	包装/価格 (¥)
BT 50	Glial cell	GBM primary	Human	CRL-3408 TM	1 ml / 122,000
BT 67	Glial cell	GBM primary	Human	CRL-3409 TM	1 ml / 122,000
BT 69	Glial cell	GBM primary	Human	CRL-3410 TM	1 ml / 122,000
BT 89	Glial cell	GBM primary	Human	CRL-3411 TM	1 ml / 122,000
BT 94	Glial cell	GBM primary	Human	CRL-3412 TM	1 ml / 122,000
BT 169	Glial cell	GBM primary	Human	CRL-3413 TM	1 ml / 122,000
BT 238	Glial cell	GBM primary	Human	CRL-3414 TM	1 ml / 122,000
BT 301	Glial cell	GBM primary	Human	CRL-3415 TM	1 ml / 122,000

Glial cells (グリア細胞)

※保存温度: 液窒

[メーカー: ACC]

細胞名	細胞タイプ	由来/疾患	動物種	ATCC® No.*	包装/価格 (¥)
HMC3	Microglia	Brain	Human	CRL-3304 TM	1 ml / 122,000
DBTRG-05MG	Glial cell	Brain / Glioblastoma	Human	CRL-2020 TM	1 ml / 110,000
M059J	Glial cell	Brain / Malignant glioblastoma; glioma	Human	CRL-2366 TM	1 ml / 110,000
M059K	Glial cell	Brain / Malignant glioblastoma; glioma	Human	CRL-2365 TM	1 ml / 110,000
EOC 2	Microglia	Brain	Mouse	CRL-2467 TM	1 ml / 140,000
EOC 13.31	Microglia	Brain	Mouse	CRL-2468 TM	1 ml / 140,000
EOC 20	Microglia	Brain	Mouse	CRL-2469 TM	1 ml / 122,000
SIM-A9	Microglia	Brain (Cerebral cortex)	Mouse	CRL-3265 TM	1 ml / 110,000
C8-B4	Monocyte / macrophage microglia	Brain (Cerebellum)	Mouse	CRL-2540 TM	1 ml / 122,000
C6	Glial cell	Brain / Glioma	Rat	CCL-107 TM	1 ml / 110,000
RG2 [D74]	Glial cell	Brain / Differentiated malignant glioma	Rat	CRL-2433 TM	1 ml / 122,000
C6/lacZ7	Glial cell	Brain / Glioma	Rat	CRL-2303 TM カルタヘナ	1 ml / 134,000
9L/lacZ	Glial cell	Brain / Gliosarcoma	Rat	CRL-2200 TM カルタヘナ	1 ml / 122,000
F98	Glial cell	Brain / Undifferentiated malignant glioma	Rat	CRL-2397 TM	1 ml / 122,000
F98 _{npEGFRv} III	Glial cell	Brain / Undifferentiated malignant glioma	Rat	CRL-2949 TM	1 ml / 110,000
F98 _{EGFR}	Glial cell	Brain / Undifferentiated malignant glioma	Rat	CRL-2948 TM	1 ml / 110,000

Medulloblastoma cells (髄芽腫細胞)

*ATCC® No.: 商品コード

※保存温度: 液窒

[メーカー: ACC]

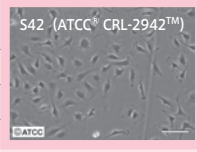
細胞名	由来	疾患	動物種	ATCC® No.*	包装/価格 (¥)
CHLA-01-MED	Brain tumor	Medulloblastoma	Human	CRL-3021 TM	1 ml / 110,000
CHLA-01R-MED	Brain, 転移部位: 胸水	Medulloblastoma	Human	CRL-3034 TM	1 ml / 110,000
D341 Med	Brain (Cerebellum)	Medulloblastoma	Human	HTB-187 TM	1 ml / 110,000
Daoy	Brain (Cerebellum)	Desmoplastic cerebellar medulloblastoma	Human	HTB-186 TM	1 ml / 110,000
D283 Med	Brain (Cerebellum), 転移部位: 腹膜	Medulloblastoma	Human	HTB-185 TM	1 ml / 110,000

Neuronal schwann cells (神経シュワン細胞)

※保存温度: 液窒

[メーカー: ACC]

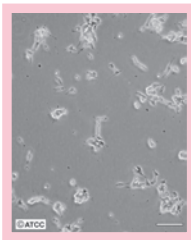
細胞名	由来	疾患	動物種	ATCC® No.*	包装/価格 (¥)
sNF02.2	Peripheral nervous system, 転移部位: 肺	Neurofibromatosis type I (Nf1)	Human	CRL-2885 TM	1 ml / 122,000
sNF96.2	Peripheral nervous system	Neurofibromatosis type I (Nf1)	Human	CRL-2884 TM	1 ml / 110,000
SW10	Nerve	Nomal	Mouse	CRL-2766 TM カルタヘナ	1 ml / 122,000
RSC96	Nerve	Nomal	Rat	CRL-2765 TM	1 ml / 122,000
RT4-D6P2T	Peripheral nervous system	Schwannoma	Rat	CRL-2768 TM	1 ml / 122,000
R3 [33-10ras3]	Sciatic nerve	Nomal	Rat	CRL-2764 TM カルタヘナ	1 ml / 122,000
S16	Sciatic nerve	Nomal	Rat	CRL-2941 TM	1 ml / 122,000
S16Y	Sciatic nerve	Nomal	Rat	CRL-2943 TM	1 ml / 122,000
S42	Sciatic nerve	Nomal	Rat	CRL-2942 TM	1 ml / 122,000



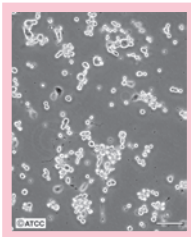
Neurons (神経細胞)

※保存温度: 液窒

[メーカー: ACC]



SH-SY5Y (ATCC® CRL-2266TM)



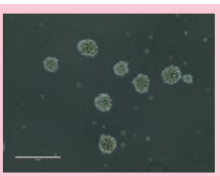
Neuro-2a (ATCC® CCL-131TM)

細胞名	細胞タイプ	由来/疾患	動物種	ATCC® No.*	包装/価格 (¥)
HCN-2	Cortical neuron	Brain / Encephalitis	Human	CRL-10742 TM	1 ml / 110,000
BE (2)-M17	Neuroblast	Brain / Neuroblastoma, 転移部位: 骨髄	Human	CRL-2267 TM	1 ml / 122,000
SH-SY5Y	Neuroblast	Brain / Neuroblastoma, 転移部位: 骨髄	Human	CRL-2266 TM	1 ml / 110,000
SK-N-AS	Neuroblast	Brain / Neuroblastoma, 転移部位: 骨髄	Human	CRL-2137 TM	1 ml / 110,000
SK-N-DZ	Neuroblast	Brain / Neuroblastoma, 転移部位: 骨髄	Human	CRL-2149 TM	1 ml / 110,000
SK-N-FI	Neuroblast	Brain / Neuroblastoma, 転移部位: 骨髄	Human	CRL-2142 TM	1 ml / 110,000
LUHMES	Dopaminergic neuron	Mesencephalon (Midbrain)	Human	CRL-2927 TM カルタヘナ	1 ml / 110,000
CATH.a	Neuron	Brain / Neuroblastoma	Mouse	CRL-11179 TM	1 ml / 122,000
N1E-115	Neuroblast	Brain / Neuroblastoma	Mouse	CRL-2263 TM	1 ml / 110,000
NB41A3	Neuroblast	Brain / Neuroblastoma	Mouse	CCL-147 TM	1 ml / 122,000
Neuro-2a	Neuroblast	Brain / Neuroblastoma	Mouse	CCL-131 TM	1 ml / 110,000
NE-4C	Neural stem cell	Brain / Neuroectodermal	Mouse	CRL-2925 TM	1 ml / 122,000
NE-GFP-4C	Neural stem cell	Brain / Neuroectodermal	Mouse	CRL-2926 TM	1 ml / 122,000
PC-12	Neuroblast	Adrenal gland / Pheochromocytoma	Rat	CRL-1721 TM	1 ml / 110,000

Oligodendrogloma (乏突起膠腫)

※保存温度: 液窒

[メーカー: ACC]



BT142 mut/- (ATCC® ACS-1018TM)

細胞名	由来/疾患	動物種	ATCC® No.*	包装/価格 (¥)
BT 54	Oligodendrogloma	Human	CRL-3416 TM	1 ml / 122,000
BT 88	Oligodendrogloma	Human	CRL-3417 TM	1 ml / 122,000
BT142 mut/-	Oligoastrocytoma Grade III	Human	ACS-1018 TM	1 ml / 128,000

Pituitary tumor cells (下垂体腫瘍細胞)

※保存温度: 液窒

[メーカー: ACC]

細胞名	分泌	由来/疾患	動物種	ATCC® No.*	包装/価格 (¥)
AtT-20	ACTH	Pituitary tumor	Mouse	CCL-89 TM	1 ml / 110,000
AtT-20ins (CGT-6)	Insulin	Sarcoma	Mouse	CRL-11285 TM	1 ml / 122,000
AtT-20/D16v-F2	ACTH	Pituitary tumor	Mouse	CRL-1795 TM	1 ml / 110,000
RC-4B/C	LH, Growth hormone, FSH, Prolactin, ACTH, Thyrotropin β	Pituitary adenoma	Rat	CRL-1903 TM	1 ml / 122,000
GH1	Growth hormone (Somatotrophin), Prolactin	Pituitary tumor	Rat	CCL-82 TM	1 ml / 134,000
GH3	Growth hormone (Somatotrophin), Prolactin	Pituitary tumor	Rat	CCL-82.1 TM	1 ml / 110,000
GH4C1	Growth hormone (Somatotrophin), Prolactin	Pituitary tumor	Rat	CCL-82.2 TM	1 ml / 122,000
MMQ	Prolactin	Pituitary tumor	Rat	CRL-10609 TM	1 ml / 122,000