

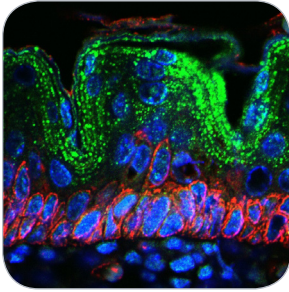
IMMUNOLOGY

Bioss
ANTIBODIES

| TARGET | APPLICATION | SPECIES | CATALOG |
|-----------------|-----------------------------|----------------|------------|
| AIF1 | WB, IHC-P, IF(IHC-P) | Hu, Ms, Rt | bs-1363R |
| AIM2 | IHC-P, FCM | Hu, Ms, Rt | bs-5986R |
| AP65L | WB, IHC-P | Hu, Ms, Rt | bs-4005R |
| APG7 | WB, IHC-P | Hu, Ms, Rt | bs-2432R |
| APG12 | WB, IHC-P | Hu, Ms, Rt | bs-4012R |
| ASK1 (Thr845) | WB, IHC-P | Hu, Ms | bs-3031R |
| ATG1 | WB, IHC-P | Hu, Ms, Rt | bs-3602R |
| ATG1 (Ser556) | WB, IHC-P | Hu, Ms, Rt | bs-3464R |
| ATG9B | IHC-P | Hu, Ms, Rt | bs-4011R |
| ATG13 | WB, IHC-P | Hu, Ms, Rt | bs-3864R |
| ATG16A (Ser287) | WB, IHC-P | Hu, Ms, Rt | bs-5198R |
| ATG16L | WB, IHC-P | Hu, Ms, Rt | bs-4007R |
| BAD | WB, IHC-P | Hu, Ms, Rt | bsm-52020R |
| Bcl2l1 | WB, IHC-P, IHC-F, ICC | Hu, Ms, Rt | bs-1353R |
| c-Raf | WB, IHC-P | Hu, Ms, Rt | bs-1703R |
| CCL5 | IHC-P, FCM | Hu, Ms, Bv | bs-1324R |
| CCR7 | IHC-P, IF(IHC-P) | Hu, Ms, Rt | bs-1305R |
| CD4 | WB, IHC-P, IHC-F, IF(IHC-P) | Hu, Ms, Rt, Pg | bs-0647R |
| CD8 | WB, IHC-P, FCM | Ms, Rt | bs-0648R |
| CD8 | WB, IHC-P, IF(IHC-P) | Hu | bs-4790R |
| CD8B | IHC-P, IF(IHC-P) | Hu, Ms, Rt | bs-4914R |
| CD14 | WB, IHC-P, FCM | Hu, Ms, Rt | bs-1192R |
| CD19 | WB, IHC-P, IF(IHC-P) | Hu, Ms, Rt | bs-4755R |
| CD31 | WB, IHC-P, ICC, FCM | Hu, Ms, Rt | bs-0195R |
| CD45 | IHC-P, FCM | Ms, Rt | bs-4819R |
| CD62L | WB, IHC-P, FCM | Ms, Rt | bs-1036R |
| CD134 | IHC-P | Hu, Ms, Rt | bs-2685R |
| CD142 | WB, IHC-P, ICC, FCM | Hu, Ms, Rt | bs-4690R |
| CD150 | IHC-P, IF(IHC-P) | Hu, Ms, Rt | bs-2709R |
| CD160 | WB, IHC-P | Hu, Ms, Rt | bs-2526R |
| CD161c/NK1.1 | WB, IHC-P | Ms, Rt | bs-4682R |
| CD200 | IHC-P | Hu, Ms, Rt | bs-6030R |
| CD212 | IHC-P, IHC-F | Ms, Rt | bs-2603R |
| CD272 | IHC-P, IF(IHC-P) | Hu, Ms, Rt | bs-0624R |

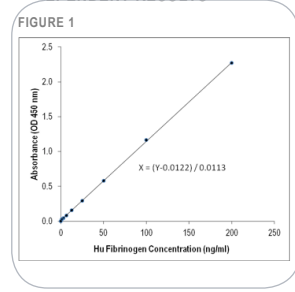
| TARGET | APPLICATION | SPECIES | CATALOG |
|---------------------------|--------------------------|----------------|------------|
| CD279 | WB, IHC-P | Hu, Ms, Rt | bs-1867R |
| Complement C1q | WB | Hu | bsm-50312M |
| Complement C2 | IHC-P | Hu, Ms, Rt | bs-8613R |
| Complement C3 | IF(IHC-P), IF (IHC-F) | Hu, Ms, Rt, Bv | bs-2934R |
| Complement C4 (γ-chain) | WB, IP | Hu | bsm-50245M |
| Complement C4 (β-chain) | WB, IHC-P, IF(IHC-P), IP | Hu | bsm-50255M |
| Complement C6 | WB, IP | Hu | bsm-50285M |
| Complement factor C8 beta | WB, IP | Hu | bsm-50238M |
| Complement factor B | WB | Hu | bsm-50226M |
| Complement fragment 3c | IHC-P | Hu, Ms, Rt, Pg | bs-6416R |
| CTLA4 | WB, IHC-F | Hu, Ms, Rt | bs-10006R |
| CXCR1 | WB, IHC-P | Hu, Ms, Rt | bs-1009R |
| CXCR2 | IHC-P, ICC | Hu, Ms, Rt | bs-1629R |
| CXCR3 | IHC-P, ICC, FCM | Hu, Ms, Rt | bs-2209R |
| CXCR4 | WB, IHC-P, FCM | Hu, Ms, Rt | bs-1011R |
| CXCR5 | IHC-P | Hu, Ms, Rt | bs-3598R |
| CXCR6 | IHC-P | Hu, Ms, Rt | bs-1628R |
| CXCR7 | IHC-P | Hu, Ms, Rt | bs-4897R |
| ERK1 + 2 | WB, IHC-P | Hu, Ms, Rt, Rb | bs-2637R |
| ERK1/2 (Thr202+Tyr204) | WB, IHC-P, IF(IHC-P) | Hu, Ms, Rt, Bv | bs-3016R |
| Fibrinogen | E | Hu | bs-1240R |
| GM-CSF | WB, IHC-P | Hu | bs-3790R |
| GM-CSF | IHC-P, IF(IHC-P) | Ms, Rt | bs-0999R |
| GM-CSFR alpha | ICC, IF(IHC-P) | Ms, Rt | bs-1457R |
| GSK3 alpha (Ser21) | WB, IHC-P | Hu, Ms, Rt | bs-4692R |
| IFN gamma | WB, IHC-P, IHC-F | Ms, Rt | bs-0480R |
| IFN gamma | IHC-P | Hu | bs-0481R |
| IKK alpha | WB, IF(IHC-P) | Hu, Ms, Rt | bs-2907R |
| IL-1 beta | WB, IHC-P, IF(IHC-P) | Hu, Ms, Rt, Dg | bs-0812R |
| IL-1R1 | WB, IHC-P | Hu, Ms, Rt | bs-2594R |
| IL-1R1 (Tyr496) | WB, IHC-P | Hu, Ms, Rt | bs-5394R |
| IL-1R2 | WB, IHC-P, IF(IHC-P) | Hu, Ms, Rt | bs-2595R |
| IL-2 | WB, IHC-P | Hu | bs-0605R |
| IL-2 | IHC-P | Ms, Rt | bs-1191R |

CCL11/EOTAXIN | bs-1601R



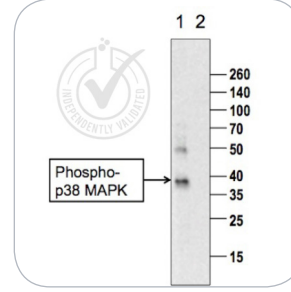
IF(IHC-P) | Mouse skin

Human fibrinogen | bs-1240R



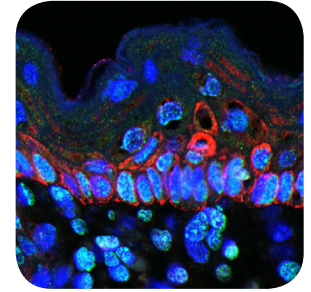
ELISA | Human fibrinogen

p38 MAPK (THR180 + TYR182) | bs-2210R





















WB | Human HeLa cells

MIP 1 Gamma | bs-2477R



IF(IHC-P) | Mouse skin

| TARGET | APPLICATION | SPECIES | CATALOG |
|------------------------------|---|-------------------|------------|
| IL-2R gamma | WB, IHC-P | Hu, Ms, Rt | bs-2545R |
| IL-2RA | IHC-P | Hu, Ms, Rt | bs-0577R |
| IL-3 | WB, IHC-P | Ms, Rt | bs-2598R |
| IL-6 |  IHC-P, FIA, Immunoassay | Hu | bs-0781R |
| IL-6 |  WB, IHC-P | Ms, Rt | bs-0782R |
| IL-8 |  WB, IHC-P | Hu, Rb | bs-0780R |
| IL-9 |  IHC-P | Ms, Rt | bs-2428R |
| IL-10 |  WB, IHC-P, E | Hu, Ms, Rt, Ch | bs-0698R |
| IL-10 |  IHC-P | Hu, Ms, Rt | bs-6761R |
| IL-10RB |  WB | Hu, Ms, Rt | bs-2602R |
| IL-12 |  WB, IHC-P, IF(IHC-P) | Hu | bs-1789R |
| IL-12 alpha |  IHC-P, ICC | Ms, Rt | bs-0767R |
| IL-12 beta |  WB, IHC-P | Hu, Ms, Rt | bs-10641R |
| IL-12RB2 |  IHC-P | Hu, Ms, Rt | bs-2604R |
| IL-15RA |  IP | Ms | bs-2605R |
| IL-17 |  IHC-P, IHC-F | Ms, Rt | bs-1183R |
| IL-17 |  IHC-P, E | Hu | bs-2140R |
| IL-17B |  IHC-P | Hu, Ms, Rt | bs-2609R |
| IL-17C |  WB, IHC-P | Hu, Ms, Rt | bs-2611R |
| IL-17RA |  IHC-P | Hu, Ms, Rt | bs-2606R |
| IL-17RB |  WB, IHC-P, FCM | Hu, Ms, Rt | bs-2610R |
| IL-18R Beta |  IHC-P, IP | Hu, Ms, Rt | bs-2616R |
| IL-21 |  IHC-P | Hu, Ms, Rt | bs-2621R |
| Insulin | WB | Hu | bsm-50568R |
| IRAK1 | WB, IHC-P | Hu, Ms, Rt | bs-6464R |
| JNK1 +2 +3 |  IHC-P | Hu, Ms, Rt | bs-2592R |
| JNK1 +2 +3 (Thr183+Tyr185) |  WB, FCM | Hu, Ms, Rt, Bv, C | bs-1640R |
| LAMP1 |  WB, IHC-P, FCM | Hu, Ms, Rt | bs-1970R |
| LAMP2 |  WB, IHC-P | Hu, Ms, Rt | bs-2379R |
| LC3A/B |  WB, IHC-P, IF(IHC-P) | Hu, Ms, Rt | bs-11731R |
| Lymphocyte Activation Gene 3 |  FCM | Hu, Ms, Rt | bs-2646R |
| Lyn | WB, IP | Hu, Ms, Rt | bsm-50313M |
| MIP 1 gamma |  IF(IHC-P) | Ms, Rt | bs-2477R |
| MAPKAP Kinase 2 |  WB, IHC-P | Hu, Ms, Rt, Bv | bs-2908R |
| MAPKAPK2 (Thr222) |  WB, IHC-P | Hu, Ms, Rt, Bv | bs-3261R |

| TARGET | APPLICATION | SPECIES | CATALOG |
|--------------------------|--|----------------|------------|
| MEK1 | WB | Hu, Ms, Rt | bsm-50303M |
| MEK1/2 (Ser218+Ser222) | IHC-P | Hu, Ms, Rt | bs-3270R |
| MEK5 |  WB, IHC-P | Hu, Ms, Rt | bs-4124R |
| MLK3 (Thr277+Ser281) | IHC-P | Hu, Ms, Rt | bs-3280R |
| MyD88 |  WB, IHC-P | Hu, Ms, Rt | bs-1047R |
| NEDD4 | IHC-P | Hu, Ms, Rt | bs-7877R |
| NFkB Inducing Kinase/NIK | WB, IHC-P | Hu, Ms, Rt | bs-0074R |
| NFkB p65 |  WB, IHC-P, FCM | Hu, Ms, Rt, Pg | bs-0465R |
| NFkB p105 / p50 |  WB, IHC-P | Hu, Ms, Rt | bs-1194R |
| NFKBIA |  WB, IHC-P | Hu, Ms, Rt | bs-1287R |
| P38 MAPK |  WB, IHC-P, ICC | Hu, Ms, Rt | bs-0637R |
| p38 MAPK (Thr180+Tyr182) |  WB, IHC-P | Hu, Ms, Rt, Gt | bs-2210R |
| PLCG 2 |  WB, FCM | Hu, Ms, Rt | bs-3532R |
| SMAD1 | WB, ICC | Hu, Ms | bsm-52222R |
| SMAD2 | WB, IHC-P, ICC | Hu, Rt | bsm-52223R |
| SMAD3 | WB, IHC-P, ICC | Hu, Ms, Rt | bsm-52224R |
| SMAD4 | WB, IHC-P, ICC | Hu, Ms | bsm-52225R |
| SMAD5 | WB, ICC | Hu, Ms, Rt | bsm-52226R |
| STAT1 | WB | Hu, Ms | bsm-52232R |
| STAT3 | WB, IHC-P, ICC | Hu, Ms | bsm-52235R |
| STAT5 |  WB, IHC-P, FCM | Hu, Ms, Rt, Pg | bs-1142R |
| TLR1 | IHC-P, FCM | Hu, Ms, Rt | bs-1919R |
| TLR2 |  WB, IHC-P, ICC, FCM | Hu, Ms, Rt, Bv | bs-1019R |
| TLR2 |  WB, IHC-P, E | Hu, Ms, Rt | bs-10472R |
| TLR3 |  WB, IHC-P | Ms, Rt | bs-1444R |
| TLR4 |  WB, IHC-P, ICC, FCM | Hu, Ms, Rt, Bv | bs-1021R |
| TLR5 |  WB, IHC-P | Hu, Ms, Rt | bs-1197R |
| TLR6 |  WB, IHC-P, FCM | Hu, Ms, Rt | bs-2716R |
| TLR7 |  WB, IF(IHC-P) | Hu, Ms, Rt | bs-6601R |
| TNF alpha |  WB, IHC-P, IF(IHC-F) | Hu, Ms, Rt | bs-2081R |
| TNF alpha |  IHC-P, IF(IHC-P) | Hu, Ms | bsm-0387M |
| TNFRSF18 | IHC-P | Hu, Ms, Rt | bs-1173R |
| TNFSF18 | IHC-P | Hu, Ms, Rt | bs-2456R |
| TNFSF9 | IHC-P | Hu | bs-3851R |