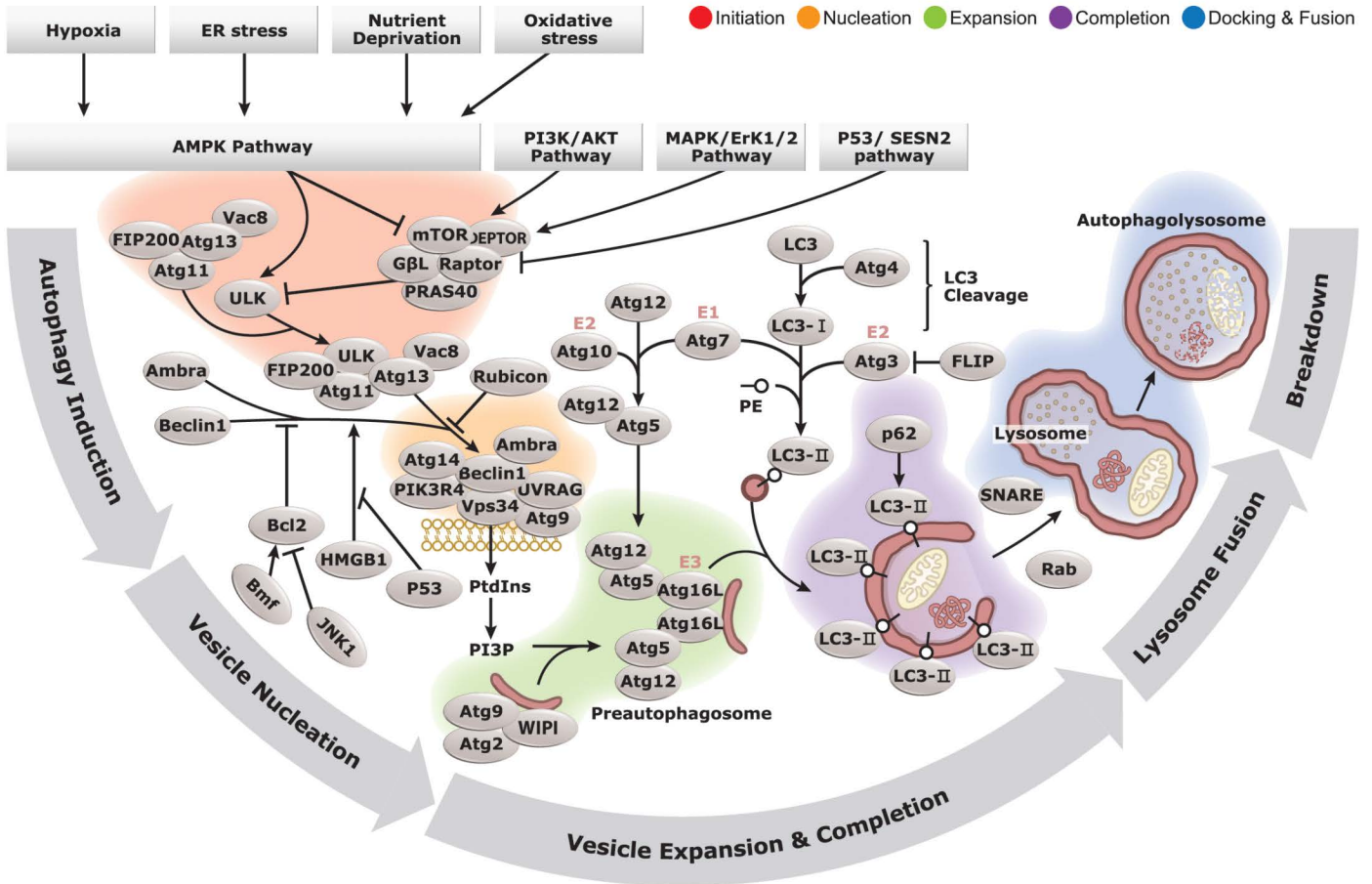


Autophagy / Mitophagy

- Your Expertise
- Our Antibodies
- Accelerated Discovery

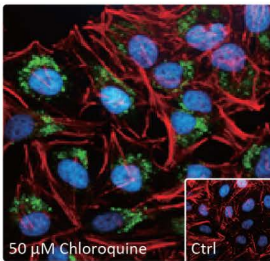
www.genetex.com



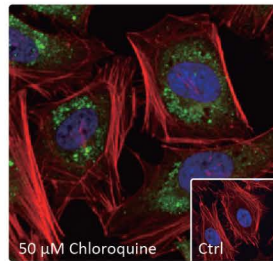
Autophagy has been implicated in many different diseases, including neurodegeneration, cardiac myopathy, autoimmune disease and cancer. The role of autophagy in cancer is complex and paradoxical. While autophagic deficiency has been shown to promote tumorigenesis in animal models, autophagy may actually support tumor growth by enhancing cancer cell survival in the face of nutrient depletion or accumulation of toxic molecules.

Highlighted Products

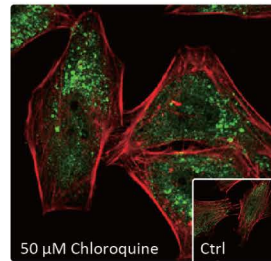
- Citation Support
- KO/KD Validation
- Comparable Abs
- Orthogonal Validation
- Protein Overexpression



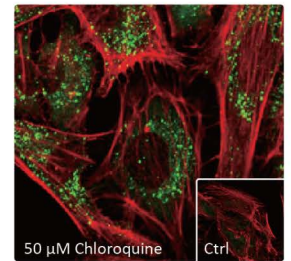
50 μM Chloroquine
LC3B antibody
(GTX127375)



50 μM Chloroquine
SQSTM1 / P62 antibody
[GT1478] (GTX629890)



50 μM Chloroquine
ATG5 antibody
(GTX113309)

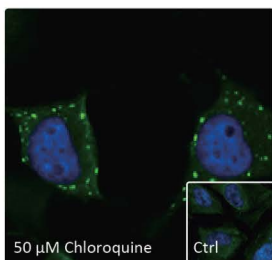


50 μM Chloroquine
ATG12 antibody [GT166]
(GTX629815)

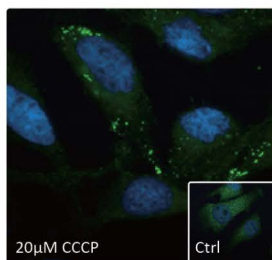


Autophagy

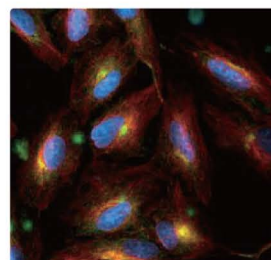
	Cat. No.	Product Name	Clonality	Reactivity	Applications
⊕	GTX17003	AMBRA1 antibody	Rb pAb	Hu,Ms,Rat	WB, ICC/IF, IHC-P, ELISA
	GTX129487	AMBRA1 antibody	Rb pAb	Hu	WB
⊕	GTX60403	AMPK alpha 1 antibody [2B7]	Ms mAb	Hu,Ms,Rat,Mk	WB, ICC/IF, IHC-P, FACS, ELISA
	GTX112999	AMPK alpha 1 antibody	Rb pAb	Hu,Ms	WB
⊕	GTX103487	AMPK alpha 2 antibody	Rb pAb	Hu,Ms,Rat	WB, ICC/IF, IHC-P, IP
⊕	GTX50863	AMPK alpha 1 + AMPK alpha 2 antibody	Rb pAb	Hu,Ms	WB, ICC/IF, IHC-P
⊕	GTX130429	AMPK alpha 1 (phospho Thr183) + AMPK alpha 2 (phospho Thr172) antibody	Rb pAb	Hu,Ms	WB
	GTX66847	AMPK beta 1 antibody [1A7]	Ms mAb	Hu,Ms,Rat,Mk	WB, ICC/IF, IHC-P, IP
	GTX32439	AMPK beta 2 antibody	Rb pAb	Hu,Ms,Rat	WB, ICC/IF, IHC-P
⊕	GTX101661	AMPK gamma 1 antibody	Rb pAb	Hu,Ms	WB, IP
	GTX109105	AMPK gamma 2 antibody	Rb pAb	Hu	WB, ICC/IF, IHC-P
	GTX51582	AMPK gamma 3 antibody	Rb pAb	Hu	IHC-P, ELISA
	GTX131503	ATG2A antibody	Rb pAb	Hu	WB, IP
	GTX132307	ATG2B antibody	Rb pAb	Hu	WB
	GTX57724	ATG3 antibody [AT15F6]	Ms mAb	Hu	WB, ICC/IF, FACS
⊕	GTX128065	ATG3 antibody	Rb pAb	Hu,Ms,Rat	WB
⊕	GTX62753	ATG4A antibody [EPR4122]	Rb mAb	Hu,Ms,Rat	WB, IHC-P, IP
⊕	GTX129276	ATG4B antibody	Rb pAb	Hu,Ms	WB, IHC-P
⊕	GTX129488	ATG4C antibody	Rb pAb	Hu	WB, IP
	GTX133617	ATG4D antibody	Rb pAb	Hu	WB
	GTX106114	ATG4D antibody [N3C3]	Rb pAb	Hu,Ms,Rat	ICC/IF, IHC-P
⊕	GTX113309	ATG5 antibody	Rb pAb	Hu,Ms	WB, ICC/IF, IHC-P, PLA
⊕	GTX102361	ATG5 antibody [N1C3]	Rb pAb	Hu,Ms,Mosq	WB, IHC-P
⊕	GTX32459	ATG7 antibody	Rb pAb	Hu,Ms,Rat	WB, ICC/IF, IHC-P
⊕	GTX113613	ATG7 antibody [N3C2], Internal	Rb pAb	Hu,Ms	WB
⊕	GTX128427	ATG9A antibody	Rb pAb	Hu,Ms,Rat	WB, ICC/IF, IHC-P, IP
⊕	GTX132439	ATG9B antibody	Rb pAb	Hu	WB, ICC/IF
	GTX132449	ATG10 antibody	Rb pAb	Hu	WB, IHC-P
	GTX129097	ATG10 antibody	Rb pAb	Hu	WB, IP
⊕	GTX629815	ATG12 antibody [GT166]	Ms mAb	Hu,Ms	WB, ICC/IF, PLA
⊕	GTX124181	ATG12 antibody	Rb pAb	Hu,Ms,Rat	WB, IHC-P, IP
⊕	GTX85183	ATG13 antibody	Rb pAb	Hu,Ms,Rat	WB, IHC-P, ELISA
	GTX65842	ATG13 antibody	Rb pAb	Hu,Rat	WB, ICC/IF, IHC-P
	GTX128166	ATG14 antibody	Rb pAb	Hu,Ms,Rat	WB, IHC-P
⊕	GTX129098	ATG16L1 antibody	Rb pAb	Hu,Ms,Rat	ICC/IF, IHC-P
⊕	GTX110619	ATG16L1 antibody [N2C1], Internal	Rb pAb	Hu	WB, ICC/IF, IHC-P
	GTX132583	ATG16L2 antibody	Rb pAb	Ms	WB
	GTX132435	ATG101 antibody	Rb pAb	Hu	WB, IHC-P
⊕	GTX100064	Bcl-2 antibody [N1N2], N-term	Rb pAb	Hu,Ms,Rat,Zfsh	WB, ICC/IF, IHC-P
⊕	GTX133555	Beclin 1 antibody	Rb pAb	Hu,Ms	WB, IHC-P
⊕	GTX55535	Beclin 1 antibody	Rb pAb	Hu,Ms,Rat	WB, ICC/IF, IHC-P, IP
	GTX29655	BMF antibody	Rb pAb	Hu,Ms	WB, ICC/IF, ELISA
	GTX108852	BMF antibody [N1C3-2]	Rb pAb	Hu	WB
⊕	GTX116540	Deptor antibody [N1C3]	Rb pAb	Hu	WB
⊕	GTX134462	ERK1/2 antibody	Rb pAb	Hu,Ms,Rat	WB
⊕	GTX635617	ERK1 (phospho Thr202/Tyr204) + ERK2 (phospho Thr185/Tyr187) antibody [HL173]	Rec Rb mAb	Hu,Ms,Rat	WB, ICC/IF, IHC-P
⊕	GTX24819	ERK1 (phospho Thr202/Tyr204) + ERK2 (phospho Thr185/Tyr187) antibody	Rb pAb	Hu,Ms,Rat,Dm,Bov, Chk,C. elegans,Xenopus	WB, ICC/IF, IHC-P, IHC, IHC (Free Floating)
⊕	GTX129093	FIP200 antibody	Rb pAb	Hu	WB, ICC/IF, IHC-P
	GTX60781	FLIP antibody [7A3D12]	Ms mAb	Hu,Ms	WB, IHC-P, FACS, ELISA
⊕	GTX113047	FLIP antibody [N1C1]	Rb pAb	Hu	WB, IHC-P
⊕	GTX628834	HMGB1 antibody [GT383]	Ms mAb	Hu,Ms,Rat	WB, ICC/IF, IHC-P, IHC-Fr
⊕	GTX101277	HMGB1 antibody	Rb pAb	Hu,Ms,Rat,Pig	WB, ICC/IF, IHC-P, IHC
⊕	GTX127344	HMGB1 antibody	Rb pAb	Hu,Ms,Rat	WB, ICC/IF, IHC-P, IHC-Fr, IP



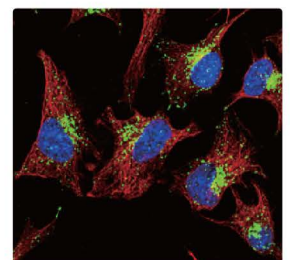
ATG9B antibody
(GTX132439) ⊕



ATG16L1 antibody
(GTX129098) ⊕

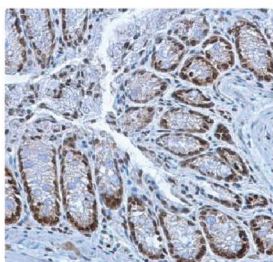


RAB6A antibody [HL1047]
(GTX635981) ⊕

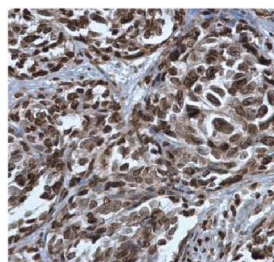


LAMP1 antibody [GT25212]
(GTX634336) ⊕

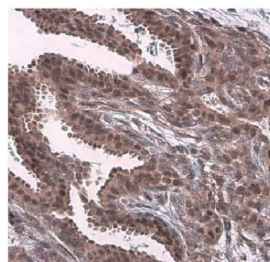
Cat. No.	Product Name	Clonality	Reactivity	Applications
GTX133806	JNK1 + JNK2 antibody	Rb pAb	Hu,Rat	WB, IHC-P
GTX105523	JNK2 antibody [N1C3]	Rb pAb	Hu,Ms,Rat,P. xylostella	WB, ICC/IF, IHC-P, IHC
GTX635799	JNK (phospho Thr183/Tyr185) antibody [HL1008]	Rec Rb mAb	Hu,Ms,Rat	WB, IHC-P
GTX634336	LAMP1 antibody [GT25212]	Ms mAb	Hu,Ms,Rat,Pig	WB, ICC/IF, IHC-P, IHC-Fr
GTX635790	LAMP2 antibody [GT856]	Ms mAb	Hu	WB, IHC-P
GTX103214	LAMP2 antibody	Rb pAb	Hu	WB, ICC/IF, IHC-P
GTX48634	LC3A antibody	Rb pAb	Hu,Ms,Rat,Zfsh,Bov	WB, ICC/IF, IHC-P, IHC-Fr
GTX132889	LC3A antibody	Rb pAb	Hu,Ms	WB
GTX632501	LC3B antibody [GT3612]	Ms mAb	Hu	WB, ICC/IF
GTX127375	LC3B antibody	Rb pAb	Hu,Ms,Rat,Pig,Mosq	WB, ICC/IF, IHC-P, IHC-Fr, FACS, IP
GTX32125	LC3C antibody	Rb pAb	Hu	WB, IHC-P, ELISA
GTX132580	mLST8 / GBL antibody	Rb pAb	Hu,Ms,Rat	WB, IHC-P
GTX630198	mTOR antibody [GT649]	Ms mAb	Hu,Ms	WB, ICC/IF, IHC-P
GTX101557	mTOR antibody [C3], C-term	Rb pAb	Hu,Ms,Rat	WB, ICC/IF, IHC-P, IP, ChIP assay
GTX102965	p53 antibody	Rb pAb	Hu,Ms,Zfsh	WB, ICC/IF, IHC-P, IP, ChIP assay
GTX100629	p53 antibody [N1], N-term	Rb pAb	Hu	WB, ICC/IF, IHC-P, IP
GTX88013	p53 (acetyl Lys379) antibody	Rb pAb	Hu,Ms	ICC/IF, IHC-P
GTX117515	p53 (mono-methyl Lys372) antibody	Rb pAb	Hu,Frg,Squirrel	WB, ICC/IF, IHC-P
GTX133905	p53 (phospho Ser6) antibody	Rb pAb	Hu	WB
GTX132995	p53 (phospho Ser15) antibody	Rb pAb	Hu	WB, ICC/IF
GTX133902	p53 (phospho Ser33) antibody	Rb pAb	Hu	WB
GTX634168	p53 (phospho Ser46) antibody [GT1018]	Ms mAb	Hu	WB, ICC/IF, IHC-P
GTX133904	p53 (phospho Ser392) antibody	Rb pAb	Hu	WB
GTX108953	PI3 kinase p150 antibody [C1C3]	Rb pAb	Hu,Ms	WB, IP
GTX118391	PRAS40 antibody	Rb pAb	Hu,Ms	WB, IHC-P
GTX133176	PRAS40 (phospho Thr246) antibody	Rb pAb	Hu,Ms	WB
GTX132277	PRAS40 (phospho Ser183) antibody	Rb pAb	Hu	WB
GTX104380	RAB3B antibody [N1C3]	Rb pAb	Hu	WB
GTX119559	RAB20 antibody [N1C3]	Rb pAb	Hu,Ms	WB, ICC/IF, IHC-P
GTX118872	RAB26 antibody [N2C3-2]	Rb pAb	Hu,Rat	WB, ICC/IF, IHC-P
GTX130477	RAB32 antibody	Rb pAb	Hu	WB, IP
GTX116390	RAB33B antibody [N2C3]	Rb pAb	Hu,Ms	WB, IHC-P
GTX635981	RAB6A antibody [HL1047]	Rec Rb mAb	Hu,Ms,Rat	WB, ICC/IF, IHC-P
GTX110646	RAB6A antibody	Rb pAb	Hu,Ms,Rat	WB, ICC/IF, IHC-P
GTX132989	Raptor antibody	Rb pAb	Hu	WB
GTX131508	Raptor antibody	Rb pAb	Hu	WB
GTX132303	Raptor antibody	Rb pAb	Hu,Rat	WB, IHC-P, IP
GTX133196	Raptor (phospho Ser792) antibody	Rb pAb	Hu	WB
GTX129096	Rubicon antibody	Rb pAb	Hu,Ms	WB, IP
GTX31593	Rubicon antibody	Rb pAb	Hu,Ms,Rat	WB, IHC-P, ELISA
GTX116925	SESN2 antibody	Rb pAb	Hu	WB
GTX636328	SQSTM1 / P62 antibody [HL1113]	Rec Rb mAb	Hu,Ms,Rat	WB, ICC/IF, IHC-P
GTX629890	SQSTM1 / P62 antibody [GT1478]	Ms mAb	Hu,Ms,Rat	WB, ICC/IF, IHC-Fr, FACS
GTX100685	SQSTM1 / P62 antibody [N3C1], Internal	Rb pAb	Hu,Ms,Rat,Bov,Honeybee,Mosq	WB, ICC/IF, IHC-P, FACS, IP, PLA
GTX133943	SQSTM1 / P62 (phospho Ser272) antibody	Rb pAb	Hu	WB
GTX134001	SQSTM1 / P62 (phospho Ser349) antibody	Rb pAb	Hu	WB
GTX128171	SQSTM1 / P62 (phospho Ser403) antibody	Rb pAb	Hu,Ms,Rat	WB, ICC/IF, IHC-P, FACS, IHC
GTX132669	ULK1 antibody	Rb pAb	Hu	WB
GTX132660	ULK1 (phospho Ser555) antibody	Rb pAb	Hu	WB
GTX133540	ULK1 (phospho Ser638) antibody	Rb pAb	Hu	WB
GTX132654	ULK1 (phospho Ser758) antibody	Rb pAb	Hu	WB
GTX111476	ULK2 antibody [C2C3], C-term	Rb pAb	Hu,Ms,Rat	WB, ICC/IF, IHC-P
GTX105365	ULK4 antibody [N2C1], Internal	Rb pAb	Hu	WB, IHC-P
GTX129528	VPS34 antibody	Rb pAb	Hu	WB, IP
GTX128167	WIPI1 antibody	Rb pAb	Hu,Ms	WB
GTX132453	WIPI2 antibody	Rb pAb	Hu,Rat	WB, ICC/IF, IHC-P



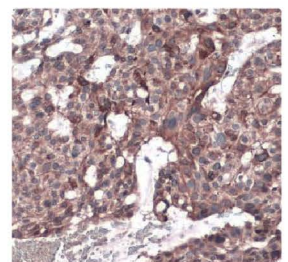
HMGB1 antibody (GTX101277)



p53 (mono-methyl Lys372) antibody (GTX117515)



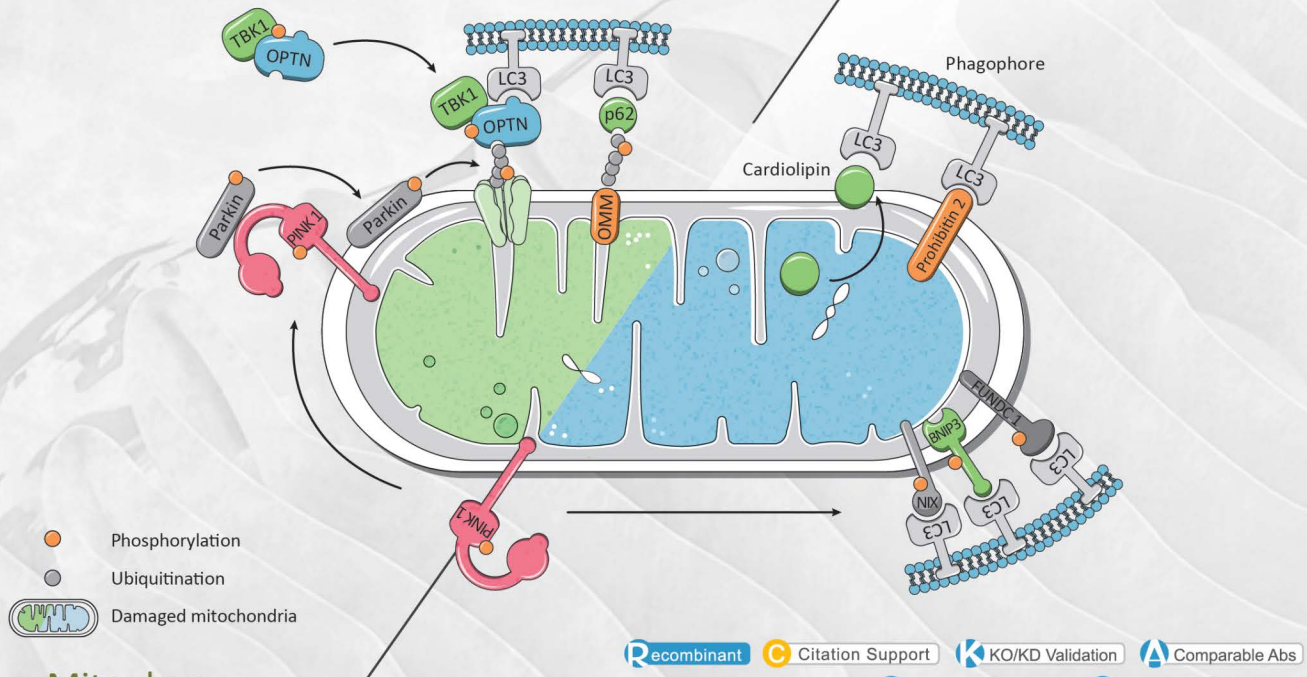
JNK1 + JNK2 antibody (GTX133806)



Beclin 1 antibody (GTX133555)

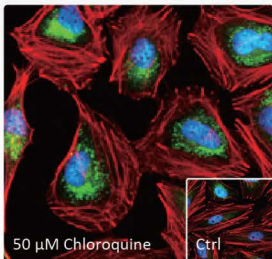
PINK1/Parkin pathway

Receptor-mediated mitophagy

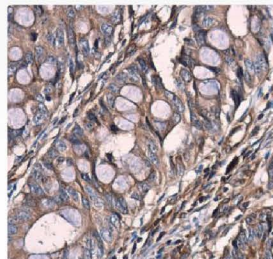


Mitophagy

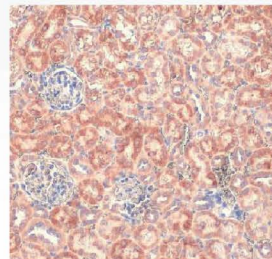
Cat. No.	Product Name	Clonality	Reactivity	Applications
C GTX17003	AMBRA1 antibody	Rb pAb	Hu, Ms, Rat	WB, ICC/IF, IHC-P, ELISA
GTX129487	AMBRA1 antibody	Rb pAb	Hu	WB
GTX31276	Bcl rambo antibody	Rb pAb	Hu, Ms, Rat	WB, IHC-P, ELISA
GTX55532	Bcl rambo antibody	Rb pAb	Hu	WB, ICC/IF
C GTX10433	BNIP3 antibody [ANA40]	Ms mAb	Hu	WB, ICC/IF, IP, ELISA, IHC
GTX64429	BNIP3 antibody	Rb pAb	Hu, Ms, Rat	WB, ICC/IF, IHC-P
R GTX636515	BNIP3L antibody [HL1203]	Rec Rb mAb	Hu, Ms, Rat	WB, ICC/IF, IHC-P
R GTX111876	BNIP3L antibody	Rb pAb	Hu, Ms, Rat, Bov	WB, ICC/IF, IHC-P
C GTX32606	FKBP8 antibody	Rb pAb	Hu, Ms, Rat	WB, ICC/IF, IP
C GTX45570	FUNDC1 antibody, N-term	Rb pAb	Hu	WB
C GTX114539	NBR1 antibody	Rb pAb	Hu, Ms	WB, IHC-P
K GTX630396	NDP52 antibody [GT422]	Ms mAb	Hu	WB, ICC/IF, IP
K GTX115378	NDP52 antibody	Rb pAb	Hu, Ms	WB, ICC/IF, IHC-P, IP
K GTX132575	Optineurin antibody	Rb pAb	Hu, Ms	WB, ICC/IF, IHC-P, IP
C GTX105447	Optineurin antibody	Rb pAb	Hu	WB, ICC/IF, IHC-P, IP
GTX31927	Parkin antibody	Rb pAb	Hu	WB, IHC-P, ELISA
GTX65812	Parkin antibody	Rb pAb	Hu, Rat	WB, ICC/IF
GTX31094	Parkin (phospho Ser101) antibody	Rb pAb	Hu	WB
GTX82618	Parkin (phospho Ser378) antibody	Rb pAb	Hu	WB
C GTX107851	PINK1 antibody [N3C3]	Rb pAb	Hu, Ms, Rat	WB, ICC/IF
C GTX31581	PINK1 antibody	Rb pAb	Hu, Ms, Rat	WB, IHC-P, ELISA
K GTX119887	PGAM5 antibody	Rb pAb	Hu	WB
C GTX102100	Prohibitin 2 antibody	Rb pAb	Hu, Ms, Rat	WB, ICC/IF, IHC-P
A C GTX630148	Ubiquitin antibody [GT7811]	Ms mAb	Hu, Ms, Rat	WB, IHC-P
A C GTX128826	Ubiquitin antibody	Rb pAb	Hu, Ms, Rat	WB



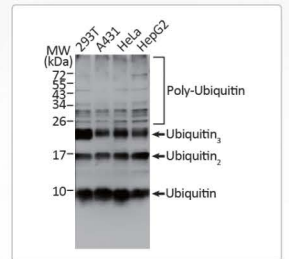
NDP52 antibody (GTX115378) C R K



Optineurin antibody (GTX132575) C K



BNIP3L antibody [HL1203] (GTX636515) R O



Ubiquitin antibody [GT7811] (GTX630148) C A O P