

Insulin Pre-Transplantation application (10-1113-01)

Insulin Pre-Transplantation application provides a quick and easy method for the quantitative determination of insulin. The incubation time of Mercodia Insulin ELISA (10-1113-01) is shortened to a total time of 15+15 minutes with retained assay specificity and sensitivity. Typical calibrator curves are shown in Figure 1.

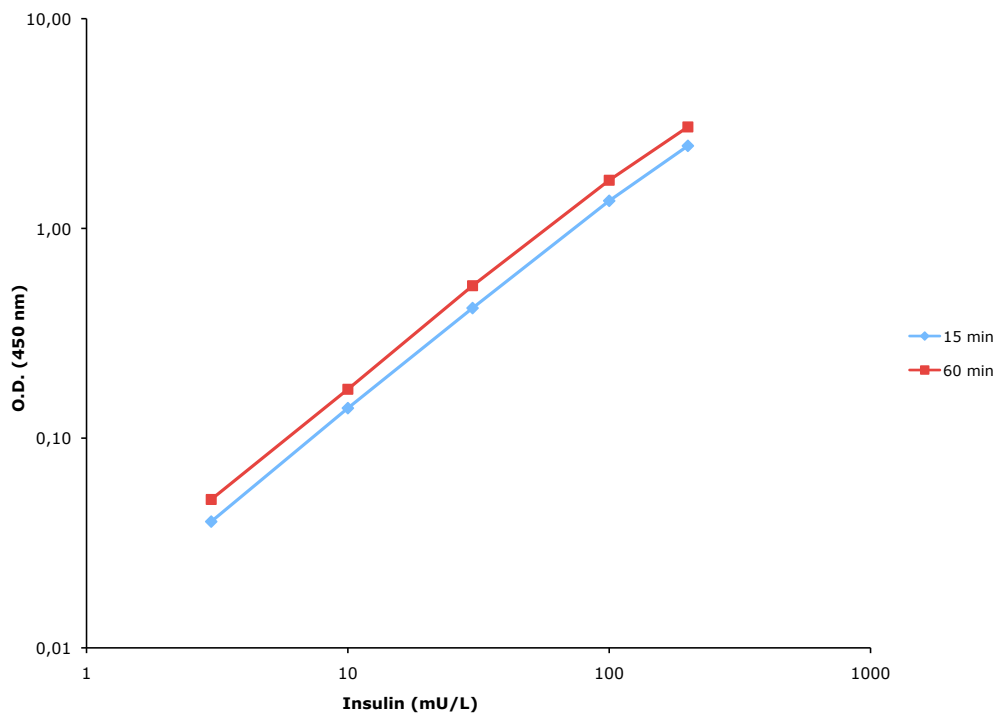


Figure 1. Typical calibrator curves in Mercodia Insulin ELISA (10-1113-01) with 15 or 60 minutes of incubation. Do not use these curves to determine assay results.

Technical Note

No: 34-0131

Results from a method comparison between 15 and 60 minutes of incubation are shown in Figure 2.

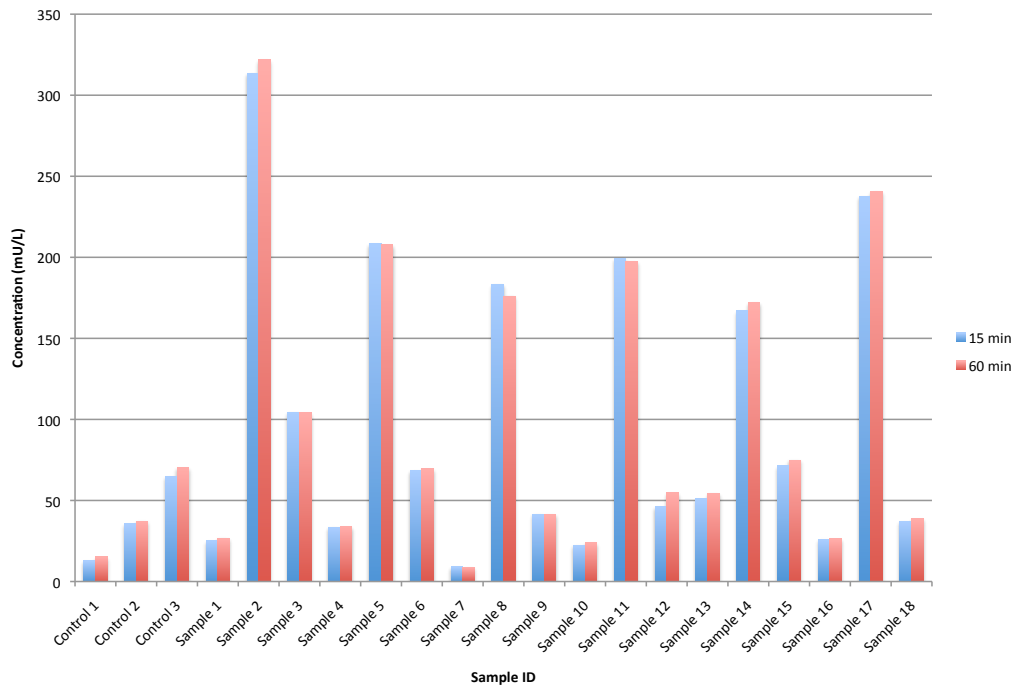


Figure 2. Comparison of 15 and 60 minutes of incubation in Mercodia Insulin ELISA (10-1113-01). Three serum pools (Control 1-3) and 18 perfusion samples from isolated islets of Langerhans (Sample 1-18) were assayed in duplicates.

A shorter incubation time might however reduce the robustness of the assay. Therefore it is of great importance that commercial controls and/or internal serum pools are assayed routinely and results continuously charted.

SUMMARY PROTOCOL SHEET

Add Calibrators, Controls and Samples	25 µL
Add enzyme conjugate 1X solution to all wells	100 µL
Incubate	15 minutes at 18-25°C on a plate shaker
Wash plate with wash buffer 1X solution	6 times
Add Substrate TMB	200 µL
Incubate	15 minutes
Add Stop Solution	50 µL Shake for 5 seconds to ensure mixing
Measure A450	Evaluate results