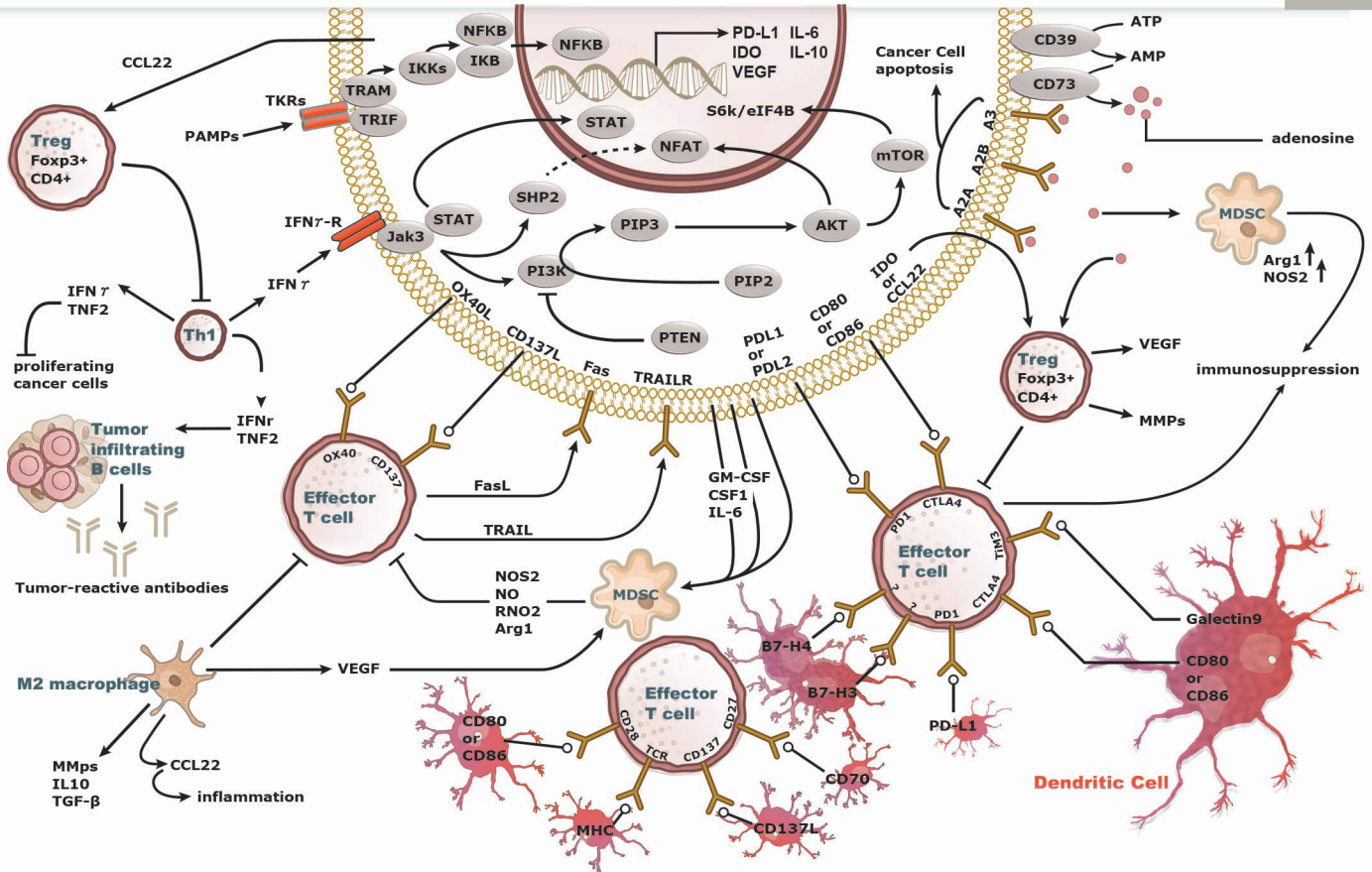






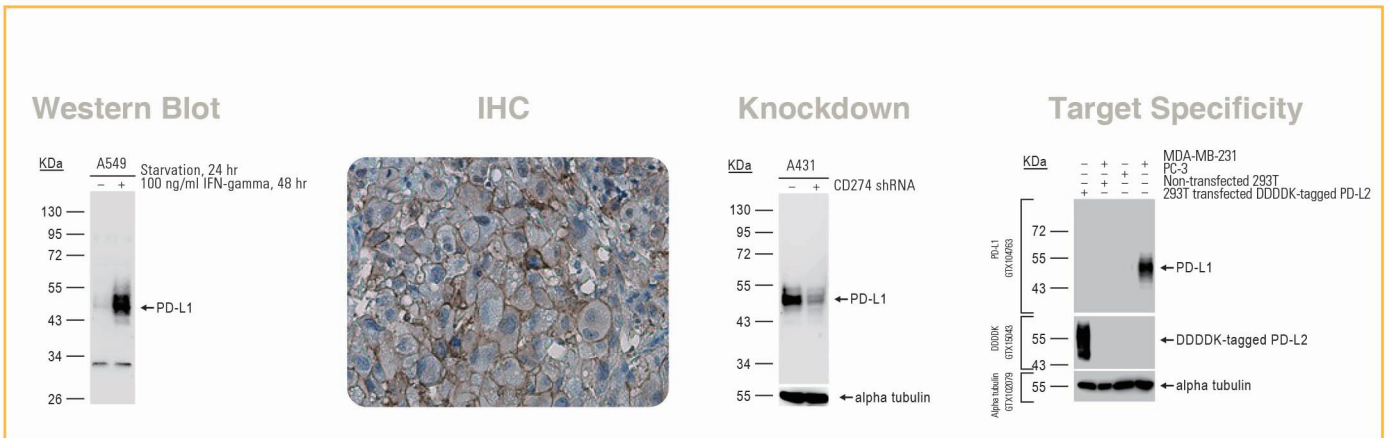
Immune Checkpoints



Increasing knowledge of how cancer cells escape immune destruction has significantly driven the evolution of cancer immunotherapy. In particular, studies describing how different immune checkpoints function to attenuate T cell antitumor activity have revealed novel opportunities for therapeutic intervention. A key checkpoint is controlled by PD-1 and its ligand PD-L1.

-  Used at 1:1000 for IHC
-  Citation support
-  Knockout/knockdown validation
-  Highly specific and sensitive

PD-L1 antibody
(GTX104763)



Cat. No.	Product Name	Host & Clonality	Reactivity	Application
Ⓢ GTX104763	PD-L1 antibody	Rb pAb	Hu	IHC-P, ICC/IF, WB
GTX42160	PD-L1 antibody [MIH6]	Rat mAb	Ms	FACS, IHC-Fr, IP
Ⓢ GTX20256	PD1 antibody [NAT105]	Ms mAb	Hu, Ms	FACS, ICC/IF, IHC, IHC-Fr, IHC-P, IP, WB
GTX85449	PD-L2 antibody	Rb pAb	Hu, Ms, Rat	ELISA, ICC/IF, IHC-P, WB
GTX42170	PD-L2 antibody [MIH14]	Ms mAb	Hu	FACS, IHC-Fr
Ⓢ GTX109242	Arginase 1 antibody	Rb pAb	Hu, Ms, Rat	FACS, ICC/IF, IHC-Fr, IHC-P, IP, WB
Ⓢ GTX130246	iNOS antibody	Rb pAb	Ms	IHC-P, WB
GTX88996	B7-H4 antibody, Internal	Gt pAb	Hu	WB
GTX84720	CD4 antibody [10B5]	Ms mAb	Hu, Dog, Mk, Rat	IHC, IHC-P, WB
Ⓢ GTX44531	CD4 antibody [GK1.5]	Rat mAb	Ms	ELISA, FACS, ICC/IF, IHC-Fr, IP, WB
GTX100824	CD4 antibody [N3C3]	Rb pAb	Hu	ELISA, WB
Ⓢ GTX42439	CD134 antibody [OX-40]	Ms mAb	Rat	FACS, IHC-Fr, IP
Ⓢ GTX74991	CD134 antibody [OX86]	Rat mAb	Ms	Blocking, FACS, IHC-Fr
GTX42437	CD137 antibody [17B5] (Low endotoxin, azide free)	Hamster mAb	Ms	FACS, Functional Assay
GTX117355	CD137L antibody [N2C3]	Rb pAb	Hu	IP, WB
GTX42201	CD252 antibody [OX-89]	Rat mAb	Ms	FACS, IHC-Fr
GTX42172	CD272 antibody [MIH26]	Ms mAb	Hu	FACS, IHC-Fr
Ⓢ GTX42152	CD276 antibody [MIH42]	Ms mAb	Hu	FACS, IHC-Fr
GTX33959	CD28 antibody	Rb pAb	Hu, Ms, Rat	FACS, ICC/IF, IHC-P
GTX80197	CD28 antibody [CD28.2] (FITC)	Ms mAb	Hu, NHuPm	FACS, ICC/IF, IHC-Fr, IP, WB, Functional Assay
Ⓢ GTX42131	CD28 antibody [YTH913.12] (Low endotoxin, azide free)	Rat mAb	Hu	FACS, IHC-Fr, IP, Functional Assay
Ⓢ GTX101447	CD40 antibody	Rb pAb	Hu	ICC/IF, IHC-Fr, IHC-P, WB
GTX44541	CD40 antibody [3/23] (Low endotoxin, azide free)	Rat mAb	Ms	ELISA, FACS, IHC-Fr, Functional Assay
GTX13546	CD40L / CD154 antibody [5F3]	Ms mAb	Hu	FACS
GTX42386	CD40L / CD154 antibody [YMF323.6.2]	Rat mAb	Hu, RMK, CIMK	FACS, WB
GTX84701	CD80 antibody [2B11]	Ms mAb	Hu	ICC/IF, IHC, IHC-P, WB
GTX41787	CD86 antibody [24F]	Ms mAb	Rat	FACS, IHC-Fr, IP
Ⓢ GTX74650	CD86 antibody [BU63]	Ms mAb	Hu	FACS, ICC/IF, IHC-Fr, IP
GTX75812	CTLA4 antibody [WKH203] (Azide free)	Ms mAb	Hu, Rat	ELISA, FACS
GTX80283	FOXP3 antibody [3G3]	Ms mAb	Hu, Ms	FACS, WB
GTX107737	FOXP3 antibody [C3], C-term	Rb pAb	Hu, Ms	ICC/IF, IP, WB
GTX89934	FOXP3 antibody, C-term	Gt pAb	Hu	ICC/IF, IHC, IHC-P, WB, ChIP assay
GTX127352	Galectin 9 antibody	Rb pAb	Hu	IHC-P, WB
GTX31185	IFN gamma antibody	Rb pAb	Rat	ELISA, IHC, WB
Ⓢ GTX15624	IFN gamma antibody [2G1]	Ms mAb	Hu, Ms	ELISA, WB
GTX130513	IL10 antibody	Rb pAb	Hu	ELISA, WB
GTX101138	IL2 antibody	Rb pAb	Hu	IHC-P, WB
GTX108495	IL2 Receptor beta antibody [C3], C-term	Rb pAb	Hu	ICC/IF, IHC-P, WB
GTX42485	Interferon gamma Receptor 1 antibody [BB1E2]	Ms mAb	Hu, Bov	ELISA, FACS, IHC-Fr, WB
GTX53343	Interferon gamma Receptor 2 antibody [7A25]	Hamster mAb	Ms	Neut, WB
GTX76000	KIR family antibody [NKVFS1]	Ms mAb	Hu	ELISA, FACS, IP, WB
Ⓢ GTX42244	LAG3 antibody [C9B7W] (Low endotoxin, azide free)	Rat mAb	Ms	FACS, Functional Assay
GTX81605	LAG3 antibody, Internal	Rb pAb	Hu	IHC-P, WB
GTX37456	MDC antibody	Rb pAb	Ms, Rat	ELISA, IHC-P, WB
GTX83552	STAT1 antibody [4H9]	Ms mAb	Hu, Dog, Mk	ICC/IF, IHC, IHC-P, WB
Ⓢ GTX110587	STAT3 antibody [C2C3], C-term	Rb pAb	Hu, Ms	FACS, ICC/IF, IHC-P, WB
Ⓢ GTX104616	STAT3 antibody [C3], C-term	Rb pAb	Hu, Ms, Rat	ICC/IF, WB
GTX108701	TBX21 antibody [N1C2]	Rb pAb	Hu	IHC-P, WB
Ⓢ GTX45121	TGF beta 1 antibody	Rb pAb	Hu, Ms, Rat	IHC, WB
GTX54117	TIM-3 antibody	Rb pAb	Hu, Ms	WB
Ⓢ GTX54054	TIM-3 antibody [RMT3-23] (Low endotoxin, azide free)	Rat mAb	Ms	FACS, ICC/IF, IHC-Fr, IHC-P, Functional Assay
Ⓢ GTX110520	TNF alpha antibody	Rb pAb	Hu, Ms, Rat	ICC/IF, IHC-P, WB
Ⓢ GTX28349	TNF alpha antibody [F6C5]	Ms mAb	Hu	ELISA, IHC-Fr, IHC-P