

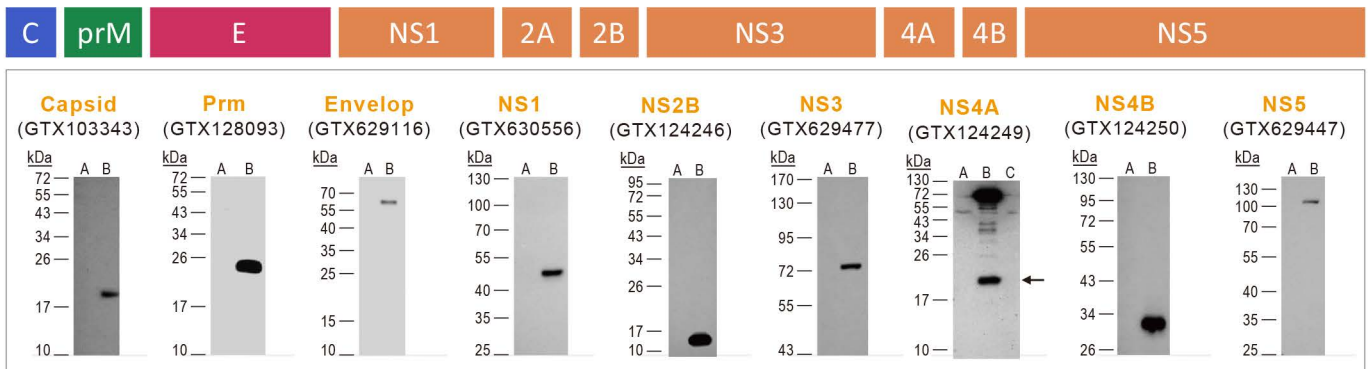


Dengue Virus Antibodies

The Dengue virus (DEN) is of the genus *Flavivirus* and possesses a positive-strand RNA genome of approximately 10.6 kb that contains a single open-reading frame encoding for a polyprotein, which can be further cleaved by cellular and viral proteases into three structural proteins (capsid protein C, membrane protein M, envelope protein E), and seven non-structural proteins (NS1, NS2a, NS2b, NS3, NS4a, NS4b, NS5). There are four serotypes (DEN1-4), though there is certainly genotypic variability in individual viral genomes within each serotype. This variability is thought to have minimal clinical significance, as human infection from any of the four serotypes results in long-term immunity to that serotype. However, cross-immunity between serotypes is of much shorter duration, meaning that many people are victims of sequential infection by different serotypes. This is clinically very important, as sequential infection appears to be a risk factor for more serious disease manifestations.

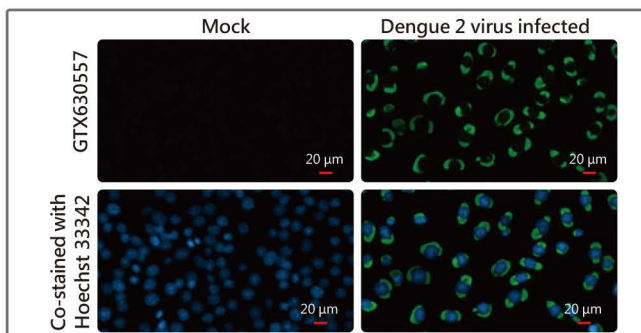


Dengue Virus Protein Schematic Diagram

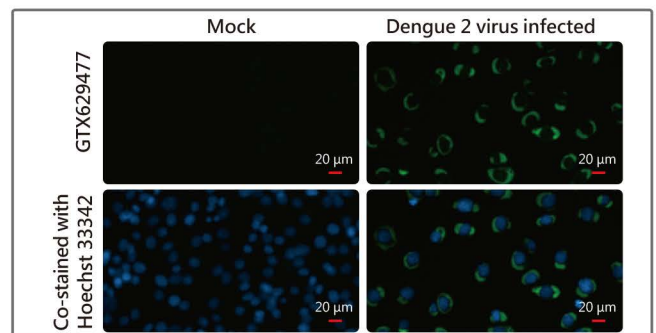


WB analysis of virus-infected BHK21 cells.

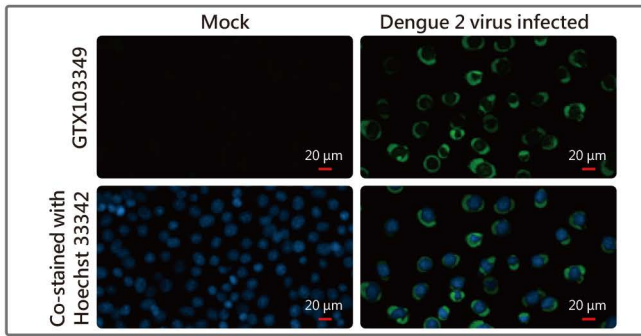
WB analysis with GeneTex dengue virus antibodies on virus-infected BHK21 cells.



NS1 (Dengue virus) antibody [GT1061] (GTX630557)
ICC/IF with NS1 (Dengue virus) antibody on BHK-21 cells infected with Dengue 2 virus.

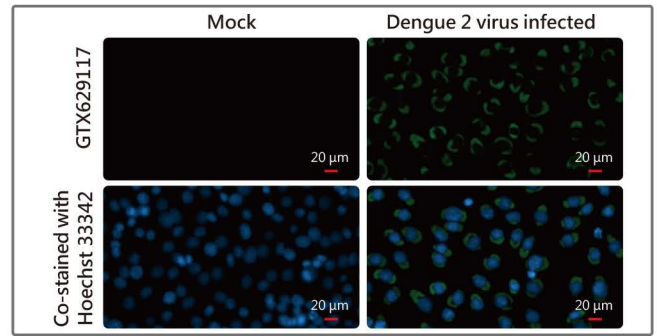


NS3 (Dengue virus) antibody [GT2811] (GTX629477)
ICC/IF with NS3 (Dengue virus) antibody on BHK-21 cells infected with Dengue 2 virus.



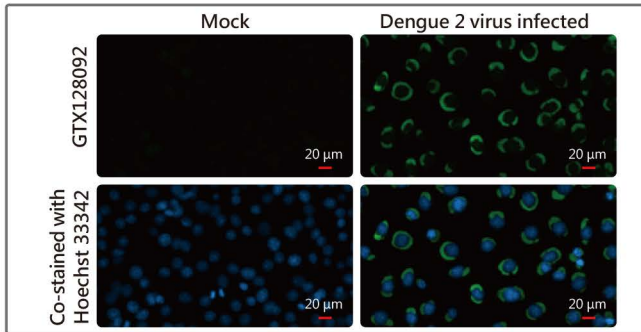
NS4B (Dengue virus) antibody (GTX103349)

ICC/IF with NS4B (Dengue virus) antibody on BHK-21 cells infected with Dengue 2 virus.



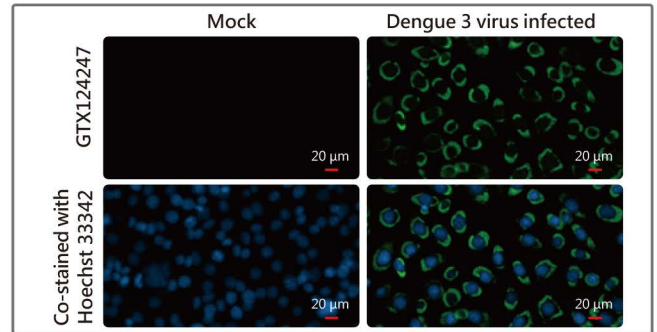
Envelope protein (Dengue virus) antibody [GT643] (GTX629117)

ICC/IF with Envelope protein (Dengue virus) antibody on BHK-21 cells infected with Dengue 2 virus.



PrM (Dengue virus) antibody (GTX128092)

ICC/IF with PrM (Dengue virus) antibody on BHK-21 cells infected with Dengue 2 virus.



Capsid Protein (Dengue virus) antibody (GTX124247)

ICC/IF with Capsid Protein (Dengue virus) antibody on BHK-21 cells infected with Dengue 3 virus.

	Cat. No.	Product	Reactivity	Host & Clonality	Application
Citation	GTX29202	Dengue virus 1, 2, 3 & 4 antibody [D1-11(3)]	DEN	Ms mAb	Dot, ELISA, ICC/IF, WB
	GTX41428	Dengue Virus Type 2 antibody [NYRDeng2]	DEN2	Ms mAb	ELISA, WB
	GTX43295	Dengue Types 1,2,3,4 antibody [BDI419]	DEN	Ms mAb	Dot, ELISA, ICC/IF
	GTX41437	Dengue Virus antibody [5161]	DEN	Ms mAb	ELISA
	GTX41430	Dengue Virus Type 2 antibody [3H5.1]	DEN2	Ms mAb	ICC/IF
	GTX43296	Dengue Type 2, envelope antibody [B932M]	DEN2	Ms mAb	ICC/IF
Citation	GTX124247	Capsid Protein (Dengue virus) antibody	Capsid (DEN)	Rb pAb	ICC/IF, WB
	GTX103343	Capsid Protein (Dengue virus) antibody	Capsid (DEN)	Rb pAb	ICC/IF, WB
	GTX128092	PrM (Dengue virus) antibody	PrM (DEN)	Rb pAb	ICC/IF, WB
Citation	GTX128093	PrM (Dengue virus) antibody	PrM (DEN)	Rb pAb	ICC/IF, WB
	GTX127277	Envelope protein (Dengue virus) antibody	Envelope (DEN)	Rb pAb	ICC/IF, WB
	GTX629116	Envelope protein (Dengue virus) antibody [GT214]	Envelope (DEN)	Ms mAb	ICC/IF, WB
	GTX629117	Envelope protein (Dengue virus) antibody [GT643]	Envelope (DEN)	Ms mAb	ICC/IF, WB
	GTX630557	NS1 (Dengue virus) antibody [GT1061]	NS1 (DEN)	Ms mAb	ICC/IF, WB
	GTX630556	NS1 (Dengue virus) antibody [GT4212]	NS1 (DEN)	Ms mAb	ICC/IF, WB
Citation	GTX103346	NS1 (Dengue virus) antibody	NS1 (DEN2)	Rb pAb	ELISA, ICC/IF, WB
	GTX124280	NS1 (Dengue virus) antibody	NS1 (DEN)	Rb pAb	ICC/IF, WB
Citation	GTX124246	NS2B (Dengue virus) antibody	NS2B (DEN)	Rb pAb	ICC/IF, WB
Citation	GTX124252	NS3 (Dengue virus) antibody	NS3 (DEN)	Rb pAb	ICC/IF, IHC-P, WB
	GTX629477	NS3 (Dengue virus) antibody [GT2811]	NS3 (DEN)	Ms mAb	ICC/IF, WB
Citation	GTX124249	NS4A (Dengue virus) antibody	NS4A (DEN)	Rb pAb	ICC/IF, WB
	GTX103349	NS4B (Dengue virus) antibody	NS4B (DEN)	Rb pAb	ICC/IF, WB
Citation	GTX124250	NS4B (Dengue virus) antibody	NS4B (DEN)	Rb pAb	ICC/IF, WB
Citation	GTX103350	NS5 (Dengue virus) antibody	NS5 (DEN)	Rb pAb	ICC/IF, WB
	GTX124253	NS5 (Dengue virus) antibody	NS5 (DEN)	Rb pAb	ICC/IF, WB
	GTX629446	NS5 (Dengue Virus 2) antibody [GT353]	NS5 (DEN)	Ms mAb	ICC/IF, WB
	GTX629447	NS5 (Dengue virus 2) antibody [GT361]	NS5 (DEN)	Ms mAb	ICC/IF, WB

