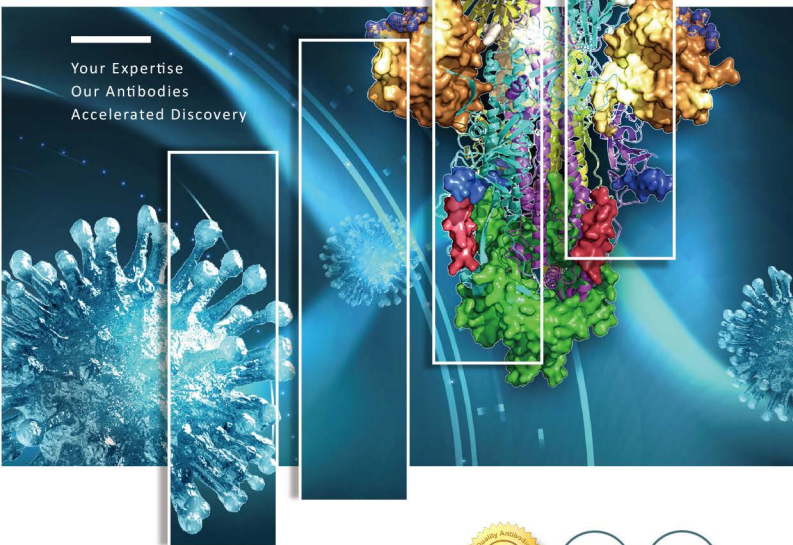


SARS-CoV-2 (COVID-19) Research Reagents

Your Expertise
Our Antibodies
Accelerated Discovery



Quality Antibodies * Quality Results

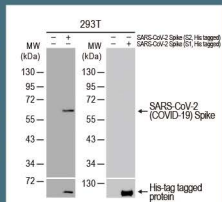
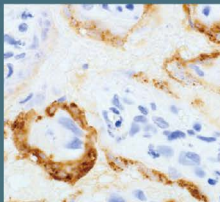
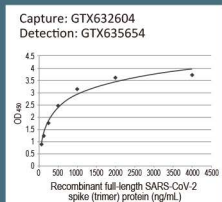


Antibodies

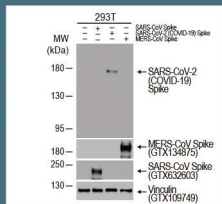
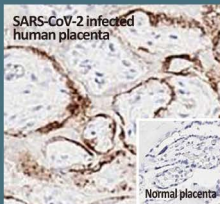
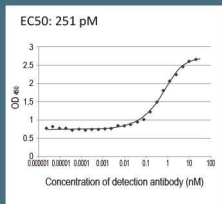
- Citation Support
- Independently Validated
- High Sensitivity & Specificity

Anti-Spike Antibodies

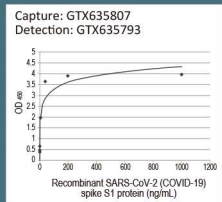
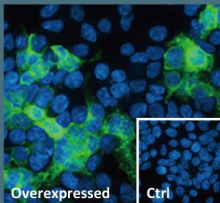
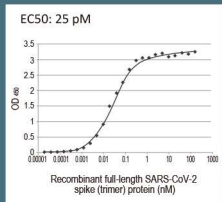
GTX632604 SARS-CoV / SARS-CoV-2 (COVID-19) Spike antibody [1A9]  



GTX635654 SARS-CoV-2 (COVID-19) Spike S1 antibody [HL6] 



GTX635793 SARS-CoV-2 (COVID-19) Spike RBD antibody [HL1004] 

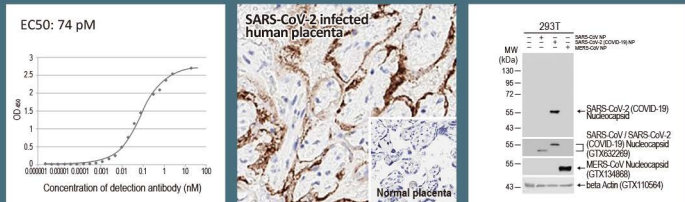




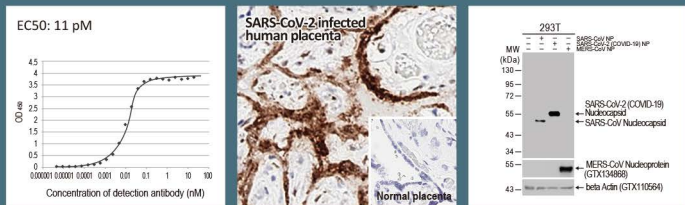
SARS-CoV-2
Research

Anti-Nucleocapsid Antibodies

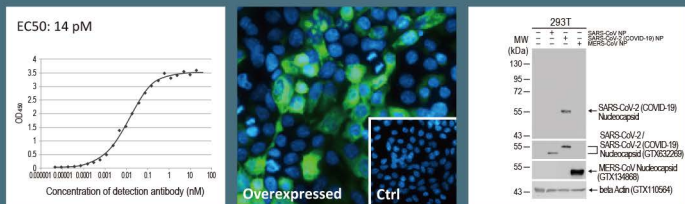
GTX635679 SARS-CoV-2 (COVID-19) Nucleocapsid antibody [HL344]



GTX635686 SARS-CoV-2 (COVID-19) Nucleocapsid antibody [HL448]



GTX635689 SARS-CoV-2 (COVID-19) Nucleocapsid antibody [HL5511]



SARS-CoV-2 Nucleocapsid ELISA Kit

Product Name	Applications	Cat. No.
Nucleocapsid Protein Sandwich ELISA Kit	ELISA, Sandwich ELISA	GTX535824

Anti-Spike Antibodies

Product Name	Clonality	EC50	Applications	Cat. No.
  Spike S1 antibody [HL1]	Rb recAb	117 pM	WB, ICC/IF, ELISA, Sandwich ELISA	GTX635656
 Spike S1 antibody [HL6]	Rb recAb	251 pM	WB, ICC/IF, IHC-P (cell pellet), ELISA, Sandwich ELISA, FACS, IHC-P	GTX635654
 Spike S1 antibody [HL134]	Rb recAb	552 pM	WB, ICC/IF, IHC-P (cell pellet), ELISA	GTX635671
  Spike S1 antibody [HL263]	Rb recAb	365 pM	WB, ICC/IF, IHC-P (cell pellet), ELISA, Sandwich ELISA	GTX635672
 Spike S1 antibody [HL13402]	Rb recAb		WB, ICC/IF, ELISA, Sandwich ELISA	GTX635713
 Spike S1 antibody [GT263]	Ms mAb		WB, ICC/IF, IHC-P (cell pellet), ELISA, Sandwich ELISA	GTX635708
Spike S1 antibody	Rb pAb		WB, ICC/IF, ELISA	GTX135384
 Spike RBD antibody [HL1003]	Rb recAb	7.49 pM	ICC/IF, ELISA, Neutralizing/Inhibition, Sandwich ELISA	GTX635792
 Spike RBD antibody [HL1004]	Rb recAb	25.13 pM	ICC/IF, ELISA, Neutralizing/Inhibition, Sandwich ELISA	GTX635793
 Spike RBD antibody [HL1014]	Rb recAb	28.77 pM	ICC/IF, ELISA, Sandwich ELISA	GTX635807
 Spike RBD antibody [HL257]	Rb recAb		WB, ICC/IF, IHC-P (cell pellet), ELISA	GTX635692
Spike RBD antibody	Rb pAb		WB, FACS, Neutralizing/Inhibition, ICC/IF, ELISA, IHC-P (cell pellet)	GTX135709
Spike RBD antibody	Rb pAb		WB, ICC/IF	GTX135385
 Spike S2 antibody [HL237]	Rb recAb		WB, ICC/IF, IHC-P (cell pellet), ELISA, Sandwich ELISA	GTX635693
Spike S2 / S2' antibody	Rb pAb		WB, ICC/IF, ELISA, Sandwich ELISA	GTX135386
  Spike antibody [1A9]	Ms mAb		WB, ICC/IF, IHC-P, IHC-P (cell pellet), FACS, IP, ELISA, Sandwich ELISA	GTX632604
Spike antibody	Rb pAb		WB, ICC/IF, IHC-P (cell pellet), ELISA, Sandwich ELISA	GTX135356
Spike antibody	Rb pAb		WB, ICC/IF, ELISA, Sandwich ELISA	GTX135360
  Spike antibody [CR3022]	Hu recAb		ELISA, Neutralizing/Inhibition	GTX01555
  Spike antibody [CR3022-RB]	Rb recAb		ELISA, Neutralizing/Inhibition	GTX01556

Anti-Nucleocapsid Antibodies

	Product Name	Clonality	EC50	Applications	Cat. No.
P R	Nucleocapsid antibody [HL455-MS]	Ms mAb		WB, ICC/IF, IHC-P (cell pellet), ELISA, Sandwich ELISA	GTX635712
R	Nucleocapsid antibody [HL5410]	Rb recAb	9 pM	WB, ICC/IF, IHC-P (cell pellet), ELISA, Sandwich ELISA	GTX635685
R	Nucleocapsid antibody [HL5410] (Gold)	Rb recAb		Immunoassay	GTX635685-17
R	Nucleocapsid antibody [HL5511]	Rb recAb	14 pM	WB, ICC/IF, IHC-P (cell pellet), ELISA, Sandwich ELISA	GTX635689
R	Nucleocapsid antibody [HL146]	Rb recAb	50 pM	WB, ICC/IF, ELISA, Sandwich ELISA	GTX635680
R	Nucleocapsid antibody [HL249]	Rb recAb	16 pM	WB, ICC/IF, IHC-P (cell pellet), ELISA, Sandwich ELISA	GTX635678
R C	Nucleocapsid antibody [HL344]	Rb recAb	74 pM	WB, ICC/IF, IHC-P, IHC-P (cell pellet), IHC-Fr, ELISA, Sandwich ELISA	GTX635679
R	Nucleocapsid antibody [HL448]	Rb recAb	11 pM	WB, ICC/IF, IHC-P, IHC-P (cell pellet), ELISA, Sandwich ELISA	GTX635686
R	Nucleocapsid antibody [HL448](HRP)	Rb recAb		WB, ELISA, Sandwich ELISA	GTX635686-01
R	Nucleocapsid antibody [HL453]	Rb recAb	6 pM	WB, ICC/IF, IHC-P (cell pellet), ELISA	GTX635687
R	Nucleocapsid antibody [HL455]	Rb recAb	6 pM	WB, ICC/IF, IHC-P (cell pellet), ELISA, Sandwich ELISA	GTX635688
	Nucleocapsid antibody [GT113]	Ms mAb		WB	GTX635808
P	Nucleocapsid antibody [6H3]	Ms mAb		WB, ICC/IF, IHC-P (cell pellet), IP, ELISA, Sandwich ELISA	GTX632269
P C	Nucleocapsid antibody	Rb pAb		WB, ICC/IF, IHC-P, IHC-P (cell pellet), FACS, IP, ELISA, Sandwich ELISA	GTX135357
	Nucleocapsid antibody	Rb pAb		WB, ICC/IF, IHC-P (cell pellet), ELISA, Sandwich ELISA	GTX135361



Lateral Flow Assay (Recommended Antibody Pairs)

Antibody Pair	Product Name	Clonality	EC50	Cat. No.
Pair I	R Nucleocapsid antibody [HL5511]	Rb recAb	14 pM	GTX635689
	R Nucleocapsid antibody [HL448]	Rb recAb	11 pM	GTX635686
Pair II	R Nucleocapsid antibody [HL5410]	Rb recAb	9 pM	GTX635685
	R Nucleocapsid antibody [HL455]	Rb recAb	6 pM	GTX635688

ELISA Antibody Pairs

Product Name	Sensitivity	Cat. No.
Spike RBD ELISA Pair [HL1014 / HL1003]		GTX500046
Spike ELISA Pair [1A9 / HL263]		GTX500041
Spike ELISA Pair [1A9 / HL6]		GTX500040
Spike ELISA Pair [1A9 / HL13402]		GTX500043
Nucleocapsid ELISA Pair [HL5511 / HL448]	39.06 µg/mL	GTX500045
Nucleocapsid ELISA Pair [HL5410 / HL455-MS]	2.68 µg/mL	GTX500042

Other SARS-CoV-2 Antibodies

Product Name	Clonality	Applications	Cat. No.
RdRp (nsp12) antibody	Rb pAb	WB, ICC/IF	GTX135467
RdRp (nsp12) antibody	Rb pAb	WB	GTX135469
ORF8 antibody	Rb pAb	WB, ICC/IF	GTX135591
nsp1 antibody	Rb pAb	WB	GTX135586
nsp1 antibody	Rb pAb	WB, ICC/IF	GTX135612
PLpro (nsp3) antibody	Rb pAb	WB, ICC/IF	GTX135589
PLpro (nsp3) antibody	Rb pAb	WB, ICC/IF	GTX135614
 ORF7a antibody [3C9]	Ms mAb	WB, ICC/IF	GTX632602
 nsp8 antibody [5A10]	Ms mAb	WB, ICC/IF, FACS	GTX632696

Recombinant Proteins

Product Name	Expression System	Applications	Cat. No.
Spike S1 protein, His tag (active)	HEK293	ELISA, Functional Assay	GTX01554-pro
Spike S1 protein, His and Avi tag (active)	HEK293	ELISA, Functional Assay	GTX01548-pro
Spike S1 protein, His tag (active)	HEK293	WB, ELISA, Functional Assay, Sandwich ELISA	GTX135817-pro
Spike S2 (ECD) protein, mouse IgG Fc tag	HEK293	WB, ELISA, Sandwich ELISA	GTX135684-pro
Spike S2 (ECD) protein, human IgG Fc tag	HEK293		GTX01559-pro
Spike RBD protein, His tag (active)	HEK293	Functional Assay	GTX01546-pro
Nucleocapsid protein, His tag	E. coli	ELISA, Sandwich ELISA	GTX135357-pro
Nucleocapsid protein, His tag	HEK293	WB, ELISA, Sandwich ELISA	GTX135592-pro
Nucleocapsid protein, His tag (Gold)	HEK293	Immunoassay	GTX135746-pro
Envelope protein, His and Avi tag	E. coli		GTX01547-pro
Envelope Protein, GST and His Tag	HEK293		GTX01565-pro
3CLpro (nsp5) protein, His tag	E. coli	WB	GTX135648-pro
3CLpro (nsp5) protein, His and Avi tag	E. coli		GTX01557-pro



Cell Pellet Blocks

Product Name	Applications	Cat. No.
Spike FFPE 293T cell pellet block	IHC-P (cell pellet)	GTX435640
Spike S1 FFPE 293T cell pellet block	IHC-P (cell pellet)	GTX435643
Spike S2 FFPE 293T cell pellet block	IHC-P (cell pellet)	GTX435644
Nucleocapsid FFPE 293T cell pellet block	IHC-P (cell pellet)	GTX435641
Envelope FFPE 293T cell pellet block	IHC-P (cell pellet)	GTX435642
Membrane FFPE 293T cell pellet block	IHC-P (cell pellet)	GTX435645

Overexpression Lysates

Product Name	Applications	Cat. No.
Spike overexpression 293T whole cell lysate	WB, ELISA	GTX535664
Spike S1 overexpression 293T whole cell lysate	WB	GTX535663
Nucleocapsid overexpression 293T whole cell lysate	WB, ELISA	GTX535665

Products for SARS-CoV-2 (COVID-19) Host Cell Entry Research

Product Name	Clonality or Expression System	Applications	Cat. No.
 ACE2 antibody [N1N2], N-term	Rb pAb	WB, ICC/IF, IHC-P, FACS, ELISA	GTX101395
 ACE2 antibody [SN0754]	Rb recAb	WB, ICC/IF, IHC-P	GTX01160
ACE2 antibody	Rb pAb	WB, ICC/IF, IHC-P, ELISA	GTX15349
Human ACE2(ECD) protein, mouse IgG Fc tag	HEK 293	WB, ELISA, Functional Assay	GTX135683-pro
Human ACE2 protein, His and Avi tag	HEK 293	ELISA	GTX01550-pro
TMPRSS2 antibody [N2C3]	Rb pAb	WB, IHC-P	GTX100743
Camostat mesylate		TMPRSS2 inhibitor	GTX01523

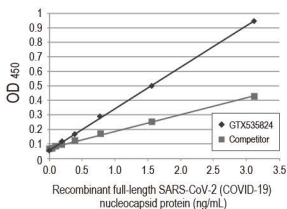
SARS-CoV-2 Nucleocapsid ELISA Kit

- *Highly Specific & Ultrasensitive*
- *Low Background in Various Sample Types*
- *Excellent Reproducibility*



ELISA Kit

SARS-CoV-2 (COVID-19)
Nucleocapsid Protein
Sandwich ELISA Kit
(GTX535824)



A. Recovery

Sample Type	Cell Culture Supernatant	Plasma
Average Recovery (%)	103.5	102.8
Range (%)	99-108	99-109

B. Linearity

Sample Type	Cell Culture Supernatant	Plasma
1:2	Average Recovery (%)	96.9
	Range (%)	85-104
1:4	Average Recovery (%)	102.2
	Range (%)	91-105



International

Tel 886.3.6208988 Fax 886.3.6208989

Address 6F-2, No.89, Dongmei Rd., Hsinchu 300,
Taiwan (R.O.C.)

E-mail international@genetex.com

USA

Toll-free 1.877.GeneTex(1.877.436.3839)

Fax 1.949.309.2888

Address 2456 Alton Parkway, Irvine, CA 92606 USA

E-mail sales@genetex.com