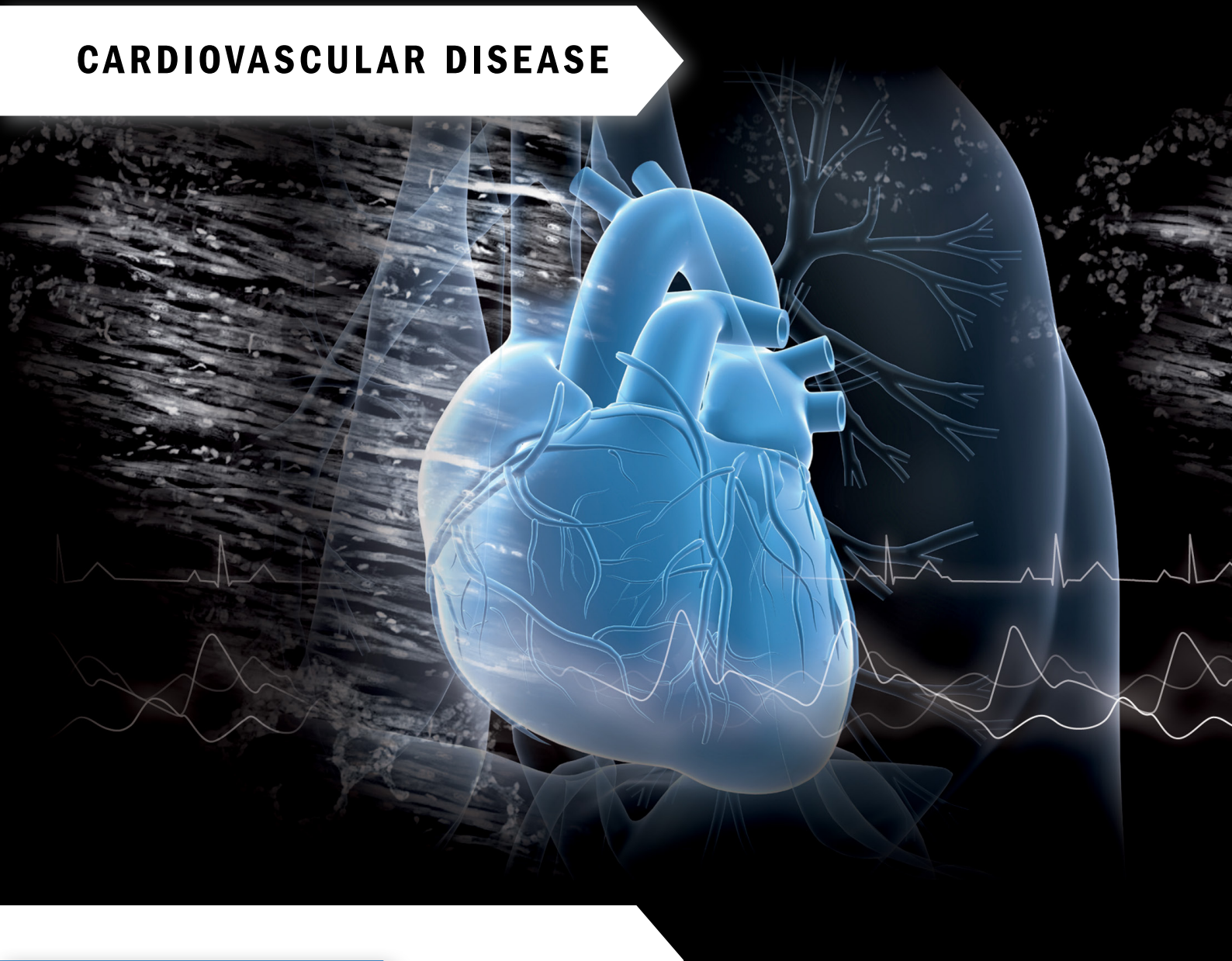


CARDIOVASCULAR DISEASE



IMMUNOASSAYS

Cat. No.	Description	Assay Format	Sample Type	Assay Range
RSHAKMAN011R	Adiponectin HMW Mouse/Rat ELISA	Sandwich ELISA, HRP-labelled antibody	Serum	3.13 - 200 ng/ml
RD195023100	Adiponectin Human ELISA (Competitive)	Competitive ELISA, Immobilized antigen	Serum, Plasma	0.1 - 10 µg/ml
RD191023100	Adiponectin Human ELISA, High Sensitivity (Sandwich)	Sandwich ELISA, HRP-labelled antibody	Serum, Urine, Cerebrospinal fluid, Milk, Plasma	1 - 150 ng/ml
RD293023100R	Adiponectin Mouse ELISA	Sandwich ELISA, Biotin-labelled antibody	Serum	0.25 - 8 ng/ml
REA212/96R	ADMA Fast ELISA	Competitive ELISA, Immobilized antigen	Serum, Plasma (EDTA)	0.2 - 3.0 µmol/l
REA201/96	ADMA ELISA	Competitive ELISA, Immobilized antigen	Serum, Plasma (EDTA)	0.1 - 5 µmol/l
REA209/96R	ADMA ELISA, High Sensitivity	Competitive ELISA, Immobilized antigen	Serum, Plasma (EDTA, heparin), Cell culture medium	

CARDIOVASCULAR DISEASE

Cat. No.	Description	Assay Format	Sample Type	Assay Range
RCD002R	Aldosterone ELISA	Competitive ELISA, Immobilized antigen	Serum, Urine, Plasma	15 - 1000 pg/ml
RCD030R	Aldosterone ELISA	Competitive ELISA	Serum, Urine, Plasma	15 - 1000 pg/ml
RA05880R	Angiotensin II Human/Rat ELISA	Sandwich ELISA, AChE-labelled antibody		0.98 - 125 pg/ml
RD191367100R	Angiotensinogen Human ELISA	Sandwich ELISA	Serum, Urine, Cerebrospinal fluid, Bronchoalveolar lavage, Amniotic fluid, Plasma	0.313 - 20 ng/ml
RD191371200R	Annexin A1 Human ELISA	Sandwich ELISA, Biotin-labelled antibody	Serum, Urine, Saliva, Plasma	0.1 - 3.2 ng/ml
RSHAKHB48R	Apo B-48 Human ELISA	Sandwich ELISA, Biotin-labelled antibody	Serum, Plasma (heparin, EDTA)	2.5 - 160 ng/ml
RD193028000R	Arginase Liver Type Human ELISA	Sandwich ELISA, HRP-labelled antibody	Serum, Cerebrospinal fluid	5 - 320 ng/ml
RA19002R	Atriopeptin Rat ELISA		Plasma, Cardia Tissue	16 - 2000 pg/ml
RAF006R	Caspase-8 Human ELISA	Sandwich ELISA, HRP-labelled antibody	Serum, Cell culture supernatant, Cell lysate	0.16 - 10 ng/ml
RA19024R	CRGP Affinity Sorbent	Products for extraction		
RA19021R	CGRP Human ELISA	Sandwich ELISA, AChE-labelled antibody	Serum, Cerebrospinal fluid, Plasma, Cell culture supernatant, Nervous tissue	8 - 1000 pg/ml
RA19022R	CGRP Rat ELISA kit	Sandwich ELISA, AChE-labelled antibody	Serum, Cerebrospinal fluid, Plasma, Cell culture supernatant, Nervous tissue	4 - 500 pg/ml
RD191180200R	CTRP9 Human ELISA	Sandwich ELISA, Biotin-labelled antibody	Serum, Plasma (EDTA, citrate, heparin)	25 - 800 pg/ml
RD191329200R	Cyclophilin A Human ELISA	Direct ELISA, Biotin-labelled antibody	Serum, Plasma	0.39 - 25 ng/ml
RD193324200R	Decorin Human ELISA	Sandwich ELISA, Biotin-labelled antibody	Serum, Plasma (EDTA, citrate, heparin)	0.125 - 4 ng/ml
RD191480200R	Endocan Human ELISA	Sandwich ELISA, Biotin-labelled antibody	Serum, Cerebrospinal fluid, Amniotic fluid, Plasma	12.5 - 800 pg/ml
RD191060200R	Epidermal FABP Human ELISA	Sandwich ELISA, Biotin-labelled antibody	Serum, Plasma (EDTA, citrate, heparin), Urine, Milk, Tissue extract, Tissue culture medium	0.5 - 40 ng/ml
RD191037100	Fetuin-A (AHSG) Human ELISA	Sandwich ELISA, HRP-labelled antibody	Serum, Plasma (EDTA, citrate, heparin)	2 - 100 ng/ml
RD191135200R	GDF-15/MIC-1 Human ELISA	Sandwich ELISA, Biotin-labelled antibody	Serum, Plasma	70 - 4480 pg/ml
RD191407100R	Haptoglobin Human ELISA	Sandwich ELISA, HRP-labelled antibody	Cerebrospinal fluid, Plasma (citrate, EDTA, heparin), Serum, Urine	3.13 - 200 ng/ml
RD192247200R	Heart FABP (FABP3) Human ELISA	Sandwich ELISA, Biotin-labelled antibody	Serum, Urine, Cerebrospinal fluid, Bronchoalveolar lavage, Amniotic fluid, Plasma	20 - 1280 pg/ml
REA205/96R	Homoarginine ELISA	Competitive ELISA	Serum, Plasma (EDTA, citrate, heparin)	31.25 - 2000 pg/ml

CARDIOVASCULAR DISEASE

Cat. No.	Description	Assay Format	Sample Type	Assay Range
RAF064R	Interleukin-33 Human ELISA	Sandwich ELISA, Biotin-labelled antibody	Serum, Plasma (citrate, heparin), Cell culture supernatant	4.0 – 250 pg/ml
RD191436200R	Kallistatin Human ELISA	Sandwich ELISA, Biotin-labelled antibody	Amniotic fluid, Bronchoalveolar lavage, Cerebrospinal fluid, Milk, Plasma (EDTA, citrate, heparin), Serum, Urine	0.25 – 16 ng/ml
RD191122200R	Lecithin-Cholesterol Acyltransferase Human ELISA	Sandwich ELISA, Biotin-labelled antibody	Serum, Plasma (EDTA, citrate), CSF	2.5 – 160 ng/ml
RD191510100CS	Matrix Metalloproteinase-3 (MMP-3) Human ELISA	Sandwich ELISA, HRP-labelled antibody	Serum, Saliva	0.2 – 10 ng/ml
RD194375200R	Matrix Metalloproteinase-8 (MMP-8) Human ELISA	Sandwich ELISA, Biotin-labelled antibody	Serum, Saliva, Plasma	0.16 – 10 ng/ml
RHK324R	MPO Human ELISA	Sandwich ELISA, Biotin-labelled antibody	Plasma, Cell culture medium, Sputum	0.4 – 100 ng/ml
RD191470200R	MyBPC3 Human ELISA	Sandwich ELISA, Biotin-labelled antibody	Serum, Plasma	10 – 640 pg/ml
RSCYK100R	NO Synthase I Human/Rat ELISA	Competitive ELISA, Immobilized antibody	Tissue extract	0.4 – 33.3 ng/ml
RD191485200R	NT-proANP Human ELISA	Sandwich ELISA, Biotin-labelled antibody	Serum, Plasma	37.5 – 2400 pg/ml
RD191486200R	NT-proBNP Human ELISA	Sandwich ELISA, Biotin-labelled antibody	Serum, Urine, Cerebrospinal fluid, Plasma	5 – 230 pg/ml
RD191446200R	Osteopontin Human ELISA	Sandwich ELISA, Biotin-labelled antibody	Cerebrospinal fluid, Milk, Serum, Plasma, Urine	0.25 – 16 ng/ml
RD191279200R	Paraoxonase 1 Human ELISA	Sandwich ELISA, Biotin-labelled antibody	Serum, Plasma (citrate)	1.25 – 80 ng/ml
RD191473200R	PCSK9 Human ELISA	Sandwich ELISA, Biotin-labelled antibody	Serum, Plasma (EDTA, citrate, heparin)	125 – 4 000 pg/ml
RD191477200R	Pentraxin 3 Human ELISA	Sandwich ELISA, Biotin-labelled antibody	Serum, Saliva, Stool, Plasma	78 – 5000 pg/ml
RAG019R	Periostin Human ELISA	Sandwich ELISA, HRP-labelled antibody	Serum, Plasma, Cell culture supernatant	78 – 5000 pg/ml
RAG020R	Periostin Mouse ELISA	Sandwich ELISA, HRP-labelled antibody	Serum, Plasma, Cell culture supernatant	31 – 2000 pg/ml
RD191390200R	Placental Growth Factor Human ELISA	Sandwich ELISA, Biotin-labelled antibody	Serum, Urine, Cerebrospinal fluid, Amniotic fluid, Plasma	2 – 128 pg/ml
RMI001R	Prorenin Human ELISA	Direct ELISA, HRP-labelled antibody	Plasma	0 – 10 ng/ml
RD191167200R	Total Prorenin/Renin Human ELISA	Sandwich ELISA, Biotin-labelled antibody	Serum, Plasma-EDTA, Plasma-Heparin, Plasma-Citrate, Urine, Amniotic fluid	
RD194169200R	Active Renin Human ELISA	Sandwich ELISA, Biotin-labelled antibody	Amniotic fluid, Plasma (EDTA, citrate, heparin), Serum, Urine	4.5 – 144 μ IU/ml
RDS004R	Renin Human ELISA	Sandwich ELISA, HRP-labelled antibody	Plasma (EDTA)	0 – 270 pg/ml



CARDIOVASCULAR DISEASE

Cat. No.	Description	Assay Format	Sample Type	Assay Range
RAF093R	sCD40L Human ELISA	Sandwich ELISA, HRP-labelled antibody	Serum, Plasma, Cell culture supernatant (only high levels)	0.16 – 10 ng/ml
RAF094R	sCD40L Mouse ELISA	Sandwich ELISA, HRP-labelled antibody	Serum, Cell culture supernatant	0.31 – 20 ng/ml
REA203/96	SDMA ELISA	Competitive ELISA, Immobilized antigen	Serum, Plasma (EDTA)	0.2-3.0 µmol/l
RLF-EK0128R	Troponin I Human ELISA	Sandwich ELISA, HRP-labelled antibody	Serum, Plasma, Cell lysate	0 – 25 ng/ml

CARDIOVASCULAR DISEASE

PROTEINS

Cat. No.	Description	Species	Type	Source
RD172410100	6-phosphogluconate dehydrogenase, decarboxylating	Human	Recombinant	<i>E. coli</i>
RD172029100	Adiponectin	Human	Recombinant	<i>E. coli</i>
RD162023050	Adiponectin	Human	Native	Human pooled serum
RD172023100	Adiponectin	Human	Recombinant	HEK293
RD272023100	Adiponectin	Mouse	Recombinant	HEK293
RD572023100	Adiponectin	Porcine	Recombinant	HEK293
RD372023100	Adiponectin	Rat	Recombinant	HEK293
RD172112100	Adiponectin Globular	Human	Recombinant	<i>E. coli</i>
RD172023100-C	Adiponectin HMW-rich	Human	Recombinant	HEK293
RD172023100-F	Adiponectin Solution	Human	Recombinant	HEK293
RD272587025	Adiponectin, Tag-free	Mouse	Recombinant	HEK293
RD272587100	Adiponectin, Tag-free	Mouse	Recombinant	HEK293
RD172091025	Adiponectin, Trimeric form (HEK)	Human	Recombinant	HEK293
RD172091100	Adiponectin, Trimeric form (HEK)	Human	Recombinant	HEK293
RD272091100	Adiponectin, Trimeric form (HEK)	Mouse	Recombinant	HEK293
RD172204100	Allograft Inflammatory Factor 1	Human	Recombinant	<i>E. coli</i>
RD172406100	Aminoacylase-1	Human	Recombinant	<i>E. coli</i>
RD172367100	Angiotensinogen	Human	Recombinant	HEK293
RD172371100	Annexin A1	Human	Recombinant	<i>E. coli</i>
RD172026100	Cardiotrophin-1	Human	Recombinant	<i>E. coli</i>
RD172394100	Collagen Triple Helix Repeat-Containing Protein 1	Human	Recombinant	<i>E. coli</i>
RD172394100-HEK	Collagen Triple Helix Repeat-Containing Protein 1	Human	Recombinant	HEK293
RD172035100	CTGF	Human	Recombinant	<i>E. coli</i>
RD172035100-HEK	CTGF	Human	Recombinant	HEK293
RD176035025	CTGF, Tag Free	Human	Recombinant	HEK293
RD172593100	CTGF, TSP Type-1 Domain	Human	Recombinant	<i>E. coli</i>
RD172180100	CTRP9A	Human	Recombinant	<i>E. coli</i>

CARDIOVASCULAR DISEASE

Cat. No.	Description	Species	Type	Source
RD172329100	Cyclophilin A	Human	Recombinant	<i>E. coli</i>
RD272455100	Cyclophilin A	Mouse	Recombinant	<i>E. coli</i>
RD372454100	Cyclophilin A	Rat	Recombinant	<i>E. coli</i>
RD172173100	Endothelial Lipase	Human	Recombinant	HEK293
RD172060100	Epidermal Fatty Acid Binding Protein	Human	Recombinant	<i>E. coli</i>
RD172037100	Fetuin-A (AHSG) NATIVE	Human	Native	Human plasma
RD172393100	FGF-18	Human	Recombinant	<i>E. coli</i>
RD172581100	Fibroblast Growth Factor 2	Human	Recombinant	<i>E. coli</i>
RD172203100	Interleukin-33	Human	Recombinant	<i>E. coli</i>
RD172122100	Lecithin-Cholesterol Acyltransferase	Human	Recombinant	<i>E. coli</i>
RD172122100-HEK	Lecithin-Cholesterol Acyltransferase	Human	Recombinant	HEK293
RD172058100	Myostatin Propeptide, Tag free	Human	Recombinant	<i>E. coli</i>
RD172485100	Natriuretic Peptides A	Human	Recombinant	<i>E. coli</i>
RD172486100	Natriuretic Peptides B	Human	Recombinant	<i>E. coli</i>
RD172528100	NOV	Human	Recombinant	HEK293
RD172045100	Osteoblast Specific Factor 2	Human	Recombinant	<i>E. coli</i>
RD172045025	Osteoblast Specific Factor 2	Human	Recombinant	<i>E. coli</i>
RD172446100	Osteopontin	Human	Recombinant	HEK293
RD172279100	Paraoxonase 1	Human	Recombinant	<i>E. coli</i>
RD172316100	Peptidoglycan Recognition Protein 1	Human	Recombinant	<i>E. coli</i>
RD172167100-HEK	Renin	Human	Recombinant	HEK293
RD172264100	Renin Receptor	Human	Recombinant	<i>E. coli</i>
RD172208025	S100A1	Human	Recombinant	<i>E. coli</i>
RD172208100	S100A1	Human	Recombinant	<i>E. coli</i>
RD172211100	S100A4	Human	Recombinant	<i>E. coli</i>
RD172218100	S100A9	Human	Recombinant	<i>E. coli</i>
RD172219100	S100A10	Human	Recombinant	<i>E. coli</i>
RD172220100	S100A11	Human	Recombinant	<i>E. coli</i>
RD172222100	S100A13	Human	Recombinant	<i>E. coli</i>

CARDIOVASCULAR DISEASE

Cat. No.	Description	Species	Type	Source
RD172225100	S100G	Human	Recombinant	<i>E. coli</i>
RD172416100	Ubiquitin Carboxyl-Terminal Hydrolase Isozyme L1	Human	Recombinant	<i>E. coli</i>

ANTIBODIES

Cat. No.	Description	Spec. React.	Type	Antigen
RD184204100	Allograft Inflammatory Factor 1	Human	Sheep PAb	<i>E. coli</i>
RD181371100	Annexin A1	Human	Rabbit PAb	<i>E. coli</i>
RD184371100	Annexin A1	Human	Sheep PAb	<i>E. coli</i>
RD184328100	Apoptosis Inhibitor of Macrophage	Human	Sheep PAb	<i>E. coli</i>
RD182028100	Arginase-I (Liver Type)	Human	Mouse MAb, Clone: 6G3	<i>E. coli</i>
RD1820261001F3	Cardiotrophin-1	Human	Mouse MAb, Clone 1F3	<i>E. coli</i>
RD1820261003G6	Cardiotrophin-1	Human	Mouse MAb, Clone 3G6D9	<i>E. coli</i>
RD181026100	Cardiotrophin-1	Human	Rabbit PAb	<i>E. coli</i>
RD181035100	Connective Tissue Growth Factor	Human	Rabbit PAb	HEK293
RD184035100	Connective Tissue Growth Factor	Human	Sheep PAb	HEK293
RD181060100	Epidermal Fatty Acid Binding Protein	Human	Rabbit PAb	<i>E. coli</i>
RD184060100	Epidermal Fatty Acid Binding Protein	Human	Sheep PAb	<i>E. coli</i>
RD184036100	Fetuin-A (AHSG)	Human	Goat PAb	Human serum
RD181036100	Fetuin-A (AHSG)	Human	Rabbit PAb	Human serum
RD181203100	Interleukin-33	Human	Rabbit PAb	<i>E. coli</i>
RD184203100	Interleukin-33	Human	Sheep PAb	<i>E. coli</i>
RD181057050	Myosin (Cardiac) Light Chain	Human	Rabbit PAb	<i>E. coli</i>
RD184485100	NT-proANP	Human	Sheep PAb	<i>E. coli</i>
RD181045050	Osteoblast Specific Factor 2	Human	Rabbit PAb	<i>E. coli</i>
RD184045100	Osteoblast Specific Factor 2	Human	Sheep PAb	<i>E. coli</i>
RD184473100	PCSK9	Human	Sheep PAb	HEK293
RD181473100	PCSK9	Human	Rabbit PAb	HEK293
RD184219100	S100A10	Human	Sheep PAb	<i>E. coli</i>

CARDIOVASCULAR DISEASE

Cat. No.	Description	Spec. React.	Type	Antigen
RD184220100	S100A11	Human	Sheep PAb	<i>E. coli</i>
RD184222100	S100A13	Human	Sheep PAb	<i>E. coli</i>
RD184225100	S100G	Human	Sheep PAb	<i>E. coli</i>

› Contact Information



BioVendor – Laboratorni medicina a.s.
Karasek 1767/1, 621 00 Brno, Czech Republic
Phone: +420 549 124 185
Fax: +420 549 211 460
E-mail: info@biovendor.com

BioVendor GmbH
Otto-Hahn-Straße 16, 34123 Kassel, Germany
Phone: +49 (0)561 861 509 33
Fax: +49 (0)561 861 509 34
E-mail: infoEU@biovendor.com

› www.biovendor.com



Oxford Biosystems Ltd
184B Park House, Park Drive
Milton Park, Abingdon, Oxfordshire
OX14 4SR, United Kingdom
Phone: +44 (0)1235 431390
E-mail: sales@oxfordbiosystems.com

BioVendor GesmbH
Gaudenzdorfer Gürtel 43-45, 1120 Vienna, Austria
Phone: +43 1 890 9025
Fax: +43 1 890 5163
E-mail: infoAustria@biovendor.com

BioVendor, LLC
128 Bingham Rd., Suite 1300, Asheville, NC 28806, USA
Phone: +1-800-404-7807, Phone: +1-828-575-9250
Fax: +1-828-575-9251
E-mail: infoUSA@biovendor.com

› www.oxfordbiosystems.com