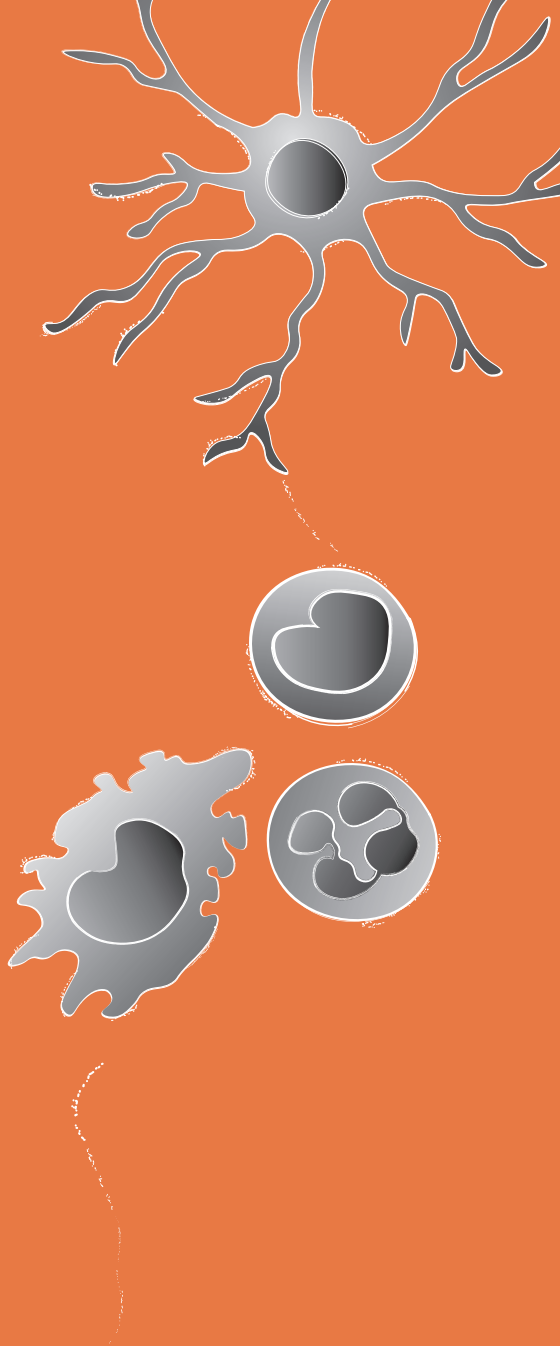


Inflammation

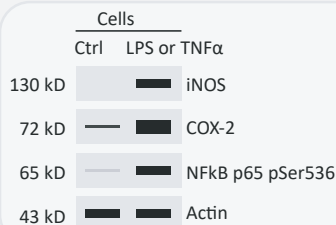


Inflammation

Antibody Panel (ARG30323)

Ideal for studying inflammation in cultured cells

- Includes **NFkB activation marker** in response to multiple inflammatory stimuli
- Includes key **inflammation markers** iNOS and COX-2 antibodies
- Includes the most suitable **loading control**
- Includes secondary antibody



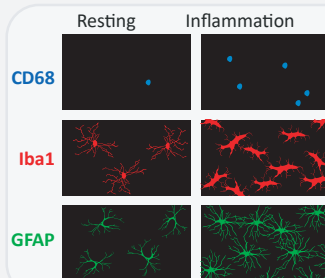
Component	Reactivity	Application	Pkg
iNOS antibody	Hu, Ms, Rat, Mamm	ICC/IF, IHC-P, IP, WB	50 µl
COX-2 antibody	Hu, Ms, Rat, Gpig, Mk, Rb, Sh	ICC/IF, IHC, WB	50 µl
NFkB p65 pSer536 antibody	Hu, Ms, Rat	ICC/IF, IHC-P, WB	20 µl
β-Actin antibody	Hu, Ms, Rat, Rb, Sh	IHC-P, WB	20 µl
anti-Rabbit IgG antibody (HRP)	Rb	ELISA, IHC-P, WB	50 µl

Neuroinflammation

Antibody Panel (ARG30324)

Ideal for studying neuroinflammation

- Ideal for **triple staining** samples from human, mouse and rat
- Includes **active microglial marker** CD68 antibody
- Includes **general microglial marker** Iba1 antibody
- Includes **astrocyte marker** GFAP antibody



Component	Reactivity	Application	Host	Pkg
CD68 antibody [KP1]	Hu, Ms, Rat, Rb	FACS, ICC/IF, IHC-Fr, IHC-P, WB	Mouse	20 µg
Iba 1 antibody	Hu, Ms, Rat	ICC/IF, IHC-Fr, WB	Rabbit	20 µl
GFAP antibody	Hu, Ms, Rat, Bv, Cat, Ck, Mk, Rb	ELISA, FACS, ICC/IF, IHC-Fr, IHC-P, WB	Chicken	20 µl

Human Inflammatory Cell

Antibody Panel (ARG30325)

Ideal for labeling inflammatory cells in human samples

- 🍷 Includes **neutrophil marker** MPO antibody
- 🍷 Includes **B cell marker** CD20 antibody
- 🍷 Includes **macrophage marker** CD68 antibody
- 🍷 Outstanding **IHC** performance
- 🍷 Includes **T cell marker** CD3 antibody

Marker	Component	Application	Pkg
Neutrophil	MPO antibody	IHC-P, WB	20 µl
Macrophage	CD68 antibody [SQab1742]	FACS, IHC-P	20 µl
T cell	CD3 antibody [SQab1713]	FACS, ICC/IF, IHC-P, IP, WB	20 µl
B cell	CD20 antibody [SQab1719]	FACS, ICC/IF, IHC-P, IP	20 µl
	anti-Rabbit IgG antibody (HRP)	WB, IHC-P, ELISA	50 µl

Mouse Inflammatory Cell

Antibody Panel (ARG30326)

Ideal for labeling inflammatory cells in mouse samples

- 🍷 Includes **neutrophil marker** Ly6G/Ly6C antibody
- 🍷 Includes **B cell marker** B220 antibody
- 🍷 Includes **macrophage marker** F4/80 antibody
- 🍷 Outstanding **IHC** performance
- 🍷 Includes **T cell marker** CD3 antibody

Marker	Component	Application	Pkg
Neutrophil	Ly6G/Ly6C antibody [RB6-8C5]	Depletion, FACS, IHC-P, IHC-Fr, IP	20 µg
Macrophage	F4/80 antibody [Cl:A3-1]	EM, FACS, ICC/IF, IHC-P, IHC-Fr, IP, RIA, WB	20 µg
T cell	CD3 antibody [CD3-12]	FACS, ICC/IF, IHC-P, IHC-Fr, WB	20 µg
B cell	B220 antibody [RA3-6B2]	FACS, FuncSt, ICC/IF, IHC-P, IHC-Fr, IP	20 µg



www.arigobio.com
E : info@arigobio.com
Phone : +886 (3) 5621738