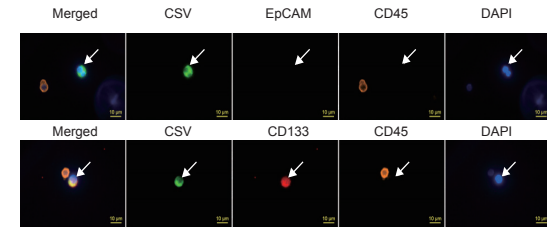
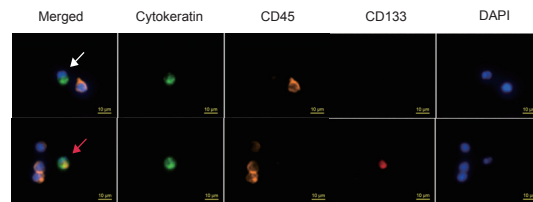


Cell-Surface Vimentin as Novel Epithelial-Mesenchymal Transition and Cancer Stem Cell Biomarkers for Pancreatic Cancer Circulating Tumor Cells



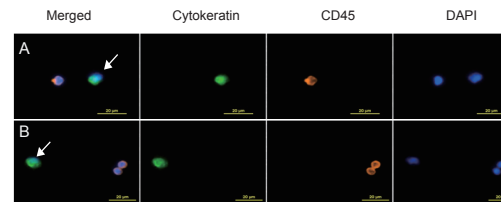
- 7.5 mL whole blood of metastatic pancreatic cancer patient.
- CytoChipNano coated with CSV capture Mab.
- CTC detected with CSV-FITC, EpCAM-APC and CD133-Alexa647 Mabs.

Capture and Isolation of EpCAM and CD133 Positive Cells in Peripheral Blood of Non-Small Cell Lung Cancer Patients



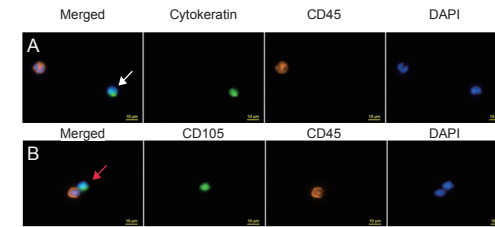
- 2 mL whole blood of non-small cell lung cancer patient.
- CytoChipNano coated with EpCAM capture Mab.
- CTC detected with CK-FITC, CD45-PE and CD133-Alexa647 Mabs.

PSMA vs EpCAM Antibody Capture of Circulating Tumor Cells in Metastatic Castration-Resistant Prostate Cancer Patient



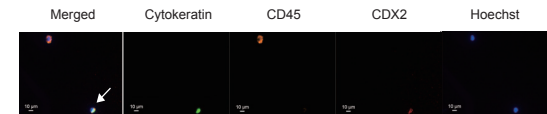
- 2 mL whole blood of metastatic castration-resistant prostate cancer patient.
- CytoChipNano coated with EpCAM (A) and PSMA (B) capture Mabs.
- CTC detected with CK-FITC and CD45-PE Mabs.

EpCAM CK Positive Circulating Tumor Cells and B7-H3 CD105 Positive Cancer Stem Cells in Clear Cell Renal Cell Carcinoma



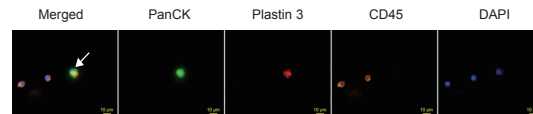
- 2 mL whole blood of clear cell renal cell carcinoma patient.
- CytoChipNano coated with EpCAM (A) and B7-H3 (B) capture Mabs.
- CTC detected with CK-FITC and CD45-PE Mabs.
- CSC detected with CD105-FITC and CD45-PE Mabs.

CDX2 Intestinal-Specific Expression in Circulating Tumor Cells of Metastatic Colorectal Adenocarcinoma Patient



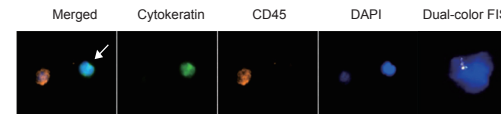
- 4.5 mL whole blood of metastatic colorectal adenocarcinoma patient.
- CytoChipNano coated with EpCAM capture Mab.
- CTC detected with CK-FITC, CD45-PE and CDX2-Alexa647 Mabs.

Plastin-3 Transformed Circulating Tumor Cells in Hepatic Portal Vein of Pancreatic Cancer Patient for Predicting Liver Metastasis



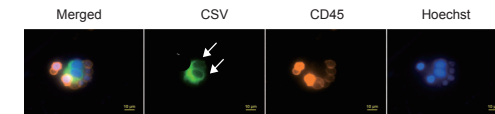
- 7.5 mL whole blood of pancreatic cancer patient.
- CytoChipNano coated with EpCAM capture Mab.
- CTC detected with PanCK-FITC, Plastin 3-Alexa647 and CD45-PE Mabs.

Androgen Receptor Gene Amplification in Circulating Tumor Cells of Metastatic Castration-Resistant Prostate Cancer Patient



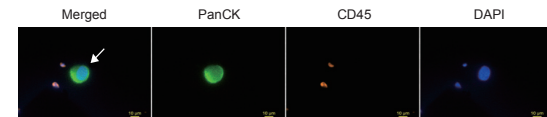
- 2 mL whole blood of metastatic castration-resistant prostate cancer patient.
- CytoChipNano coated with EpCAM capture Mab.
- CTC detected with CK-FITC and CD45-PE Mabs.
- Cell stained with AR FISH Probe (yellow) and CEN X FISH Probe (green).

Cell-Surface Vimentin Transformed EMT CTCs and CSCs in Metastatic Castration-Resistant Prostate Cancer



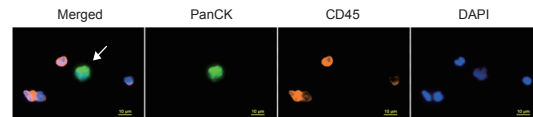
- 7.5 mL whole blood of prostate cancer patient.
- CytoChipNano coated with CSV capture Mab.
- CTC detected with CSV-FITC and CD45-PE Mabs.

Cell-Surface Vimentin and Pan Cytokeratin Positive Circulating Tumor Cells in Pleural Effusion of Lung Adenocarcinoma Patient



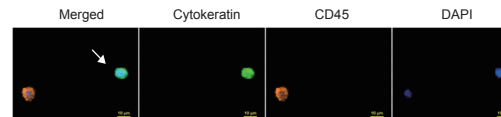
- 20 mL pleural effusion of lung adenocarcinoma patient.
- CytoChipNano coated with CSV capture Mab.
- CTC detected with PanCK-FITC and CD45-PE Mabs.

Antibodies Targeting ASGPR and PanCK for Capture and Identification of Circulating Hepatocellular Carcinoma Cells



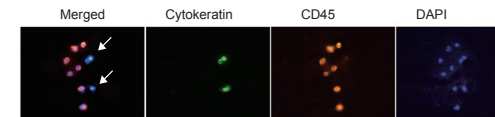
- 4.5 mL whole blood of hepatocellular carcinoma patient.
- CytoChipNano coated with ASGPR capture Mab.
- CTC detected with PanCK-FITC and CD45-PE Mabs.

Circulating Epithelial Cells in Dialysis Patient with Acquired Cystic Kidney Disease



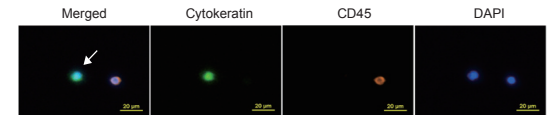
- 2 mL whole blood of acute cystic kidney diseased patient.
- CytoChipNano coated with EpCAM capture Mab.
- CTC detected with CK-FITC and CD45-PE Mabs.

Antibodies Targeting HLA-G and PanCK for Capture and Identification of Circulating Choriocarcinoma Cells



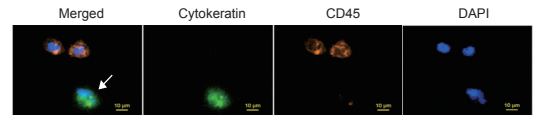
- 2 mL whole blood of choriocarcinoma patient.
- CytoChipNano coated with HLA-G capture Mab.
- Circulating choriocarcinoma cells detected with PanCK-FITC and CD45-PE Mabs.

Detection of Circulating Tumor Cells in Cholangiocarcinoma Patients



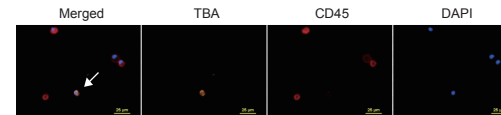
- 2 mL whole blood from cholangiocarcinoma patient.
- CytoChipNano coated with EpCAM capture Mab.
- CTC detected with CK-FITC and CD45-PE Mabs.

Circulating Tumor Cells as Metastatic Biomarker in Oral Squamous Cell Carcinoma



- 2 mL whole blood of oral cancer patient.
- CytoChipNano coated with EpCAM capture Mab.
- CTC detected with CK-FITC and CD45-PE Mabs.

Prenatal Detection of Fetal Trophoblasts in Maternal Circulation



- 9 mL whole blood of pregnant donor.
- CytoChipNano coated with HLA-G capture Mab.
- CFC detected with TBA-TRITC and CD45-APC Mabs.

Abnova Corporation
www.abnova.com

9F, No. 108, Jhouzih St., Neihu, Taipei 114, Taiwan
Tel: + 886 2 8751 1888
Fax: + 886 2 6602 1218
Email:sales@abnova.com