

# Antibodies for Simple Western™

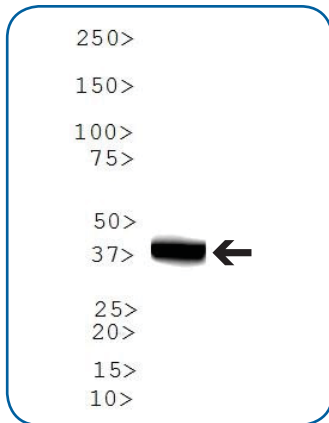
Certified Antibodies for ProteinSimple® Instruments:



- Guaranteed Simple Western performance
- Largest selection of certified antibodies in the market with over 1,000 and growing
- Optimized antibody and lysate concentrations to save you time
- Antibodies receive a “Badge of Honor” which is easily visible in online search
- Test an antibody not yet certified in Simple Western and become eligible for rewards

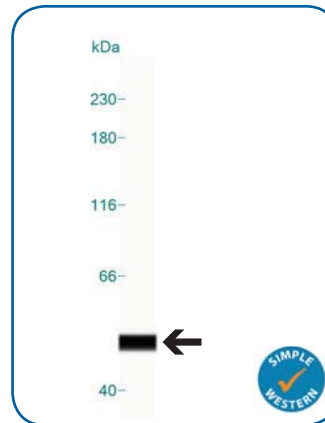
See data examples below:

## Traditional Western



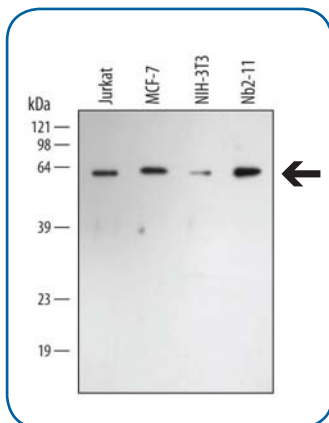
**Detection of Human Cytokeratin 19 by Western blot.** Western blot shows detection of Cytokeratin 19 in untreated MCF-7 Lysate. The nitrocellulose membrane was probed with a Rabbit Anti-Human/Cytokeratin 19 Polyclonal Antibody (Catalog # NBP1-78278, Novus Biologicals). A specific band was detected for Cytokeratin 19 at approximately 40 kDa (as indicated).

## Simple Western



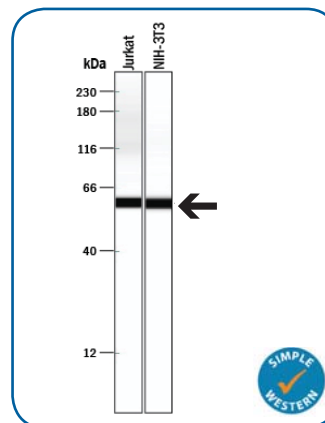
**Detection of Human Cytokeratin 19 by Simple Western.** Simple Western lane view shows a specific band between 40-45 kDa for Cytokeratin 19 tested in 0.05 mg/mL of untreated MCF-7 Lysate using a Rabbit Anti-Human/Cytokeratin 19 Antibody (Catalog # NBP1-78278, Novus Biologicals). This experiment was performed under reducing conditions using the 12-230 kDa separation system.

## Traditional Western



**Detection of Human/Mouse/Rat HSP60 by Western blot.** Western blot shows lysates of Jurkat human acute T cell leukemia cell line, MCF 7 human breast cancer cell line, NIH 3T3 mouse embryonic fibroblast cell line, and Nb2 11 rat lymphoma cell line. PVDF membrane was probed with 0.1 µg/mL of Human/Mouse/Rat HSP60 Antigen Affinity-purified Polyclonal Antibody (Catalog # AF1800) followed by HRP-conjugated Anti-Rabbit IgG Secondary Antibody (Catalog # HAF008, R&D Systems). A specific band was detected for HSP60 at approximately 62 kDa (as indicated).

## Simple Western



**Detection of Human and Rat HSP60 by Simple Western.** Simple Western lane view shows lysates of Jurkat human acute T cell leukemia cell line and NIH 3T3 mouse embryonic fibroblast cell line, loaded at 0.2 mg/mL. A specific band was detected for HSP60 at approximately 60 kDa (as indicated) using 0.5 µg/mL of Rabbit Anti-Human/Mouse/Rat HSP60 Antigen Affinity-purified Polyclonal Antibody (Catalog # AF1800, R&D Systems). This experiment was conducted under reducing conditions and using the 12-230 kDa separation system.

# Popular Antibodies

## Snapshot of certified antibodies from both Novus Biologicals and R&D Systems

14-3-3 Gamma	clAP (pan)	HDAC6	phospho-p53
4-Hydroxynonenal	clAP-2/HIAP-1	HGF R/c-MET	phospho-STAT1
A20/TNFAIP3	c-Myc	HIF-1 alpha	phospho-STAT6
Actin	Complement C3	HIF-2 alpha	PINK1
Adenosine A2a Receptor	COX IV	His Tag	PRAME
AKT	CXCR4	Histone H4	PTK7/CCK4
alpha Tubulin	Cytochrome C	HSP27	RBFOX3/NeuN
alpha Synuclein	Cytokeratin 5	HSP60	S100A7/Psoriasis
Annexin A2	Cytokeratin 18	HSP70/HSPA1A	S100A9
ATG5	Cytokeratin 19	IKK alpha	SCP1
ATG7	DDR2	IKK beta	Sirtuin 1/SIRT1
ATM	Dnmt1	LC3	SNAIL
Axl	Dnmt3b	LDL Receptor	SNX27
Bcl-2	DRP1	LOX	SOX2
Beclin 2	DYKDDDDK Epitope Tag	MMR/CD206	SOX9
beta Tubulin	Dynamin	MTH1	SR-BI
Beta Tubulin III	EGF R/ErbB1	NBR1	SREBP1
BST2	EGLN1/PHD2	NBS1	STAT5b
Cadherin 11	Enolase 1	Nestin	Survivin
Calnexin	Enolase 2	NeuN	TERT
Calreticulin	ER alpha/NR3A1	NuMA	Tie-2
Caspase 3	ErbB2/Her2	OXPAT	TMEM26
Caspase 8	ERK1/ERK2	p38	TRIF
CCR5	FANCD2	p53	Tyrosine Hydroxylase
CD3	GAP-43	p62/SQSTM1	UCP1
CD38	GAPDH	p70 S6 Kinase	Vimentin
CD4	GFAP	p73	VPS34
CD106/VCAM1	GFP	PCNA	WT1
CD31/PECAM1	HDAC1	PDZK1	xCT
CDX2	HDAC2	Perilipin 2	ZEB1

**bio**techne®



Building  
Innovation  
Opportunities

bio-techne.com  
info@bio-techne.com  
techsupport@bio-techne.com

North America  
TEL 800 343 7475

Europe • Middle East • Africa  
TEL +44 (0)1235 529449

China  
info.cn@bio-techne.com  
TEL +86 (21) 52380373

Rest of World  
bio-techne.com/find-us/distributors  
TEL +1 612 379 2956

**LEARN MORE**

[novusbio.com/simplewestern](http://novusbio.com/simplewestern)  
[rndsystems.com/simplewestern](http://rndsystems.com/simplewestern)