

Anti-SARS-CoV-2 Nucleocapsid Protein (NCP), Mouse-Mono (Clone# 7)

Cat No. # SNCP2G

Package : 100 µg

Host	Mouse
Immunogen	Recombinant SARS-CoV-2 Nucleocapsid protein (NCP)
Clonality	Monoclonal
Purification	Protein G purified
Application	ELISA, ICC/IF
Reactivity	SARS Coronavirus 2

PROPERTIES

Form	Liquid
Buffer	1×PBS (pH 7), 0.09% Sodium azide
Storage	Store as concentrated solution. Centrifuge briefly prior to opening vial. For short-term storage (1-2 weeks), store at 4°C. For long-term storage, aliquot and store at -20°C or below. Avoid multiple freeze-thaw cycles.
Concentration	0.5 mg/mL (Please refer to the vial label for the specific concentration)
Conjugation	Unconjugated
Note	For Research use. Not for any clinical, therapeutic, or diagnostic use in humans or animals. Not for animal or human consumption.

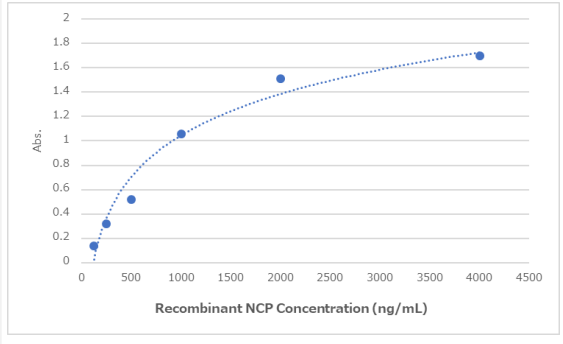
APPLICATION

	Recommended Concentration	Sample
ELISA	1 µg/mL	Recombinant SARS-CoV-2 Nucleocapsid Protein
ICC/IF	1 µg/mL	SARS-CoV-2 δ strain infected VeroE6/TMPRSS2 cell

*Application Note: Optimal dilutions/concentrations should be determined by the researcher.

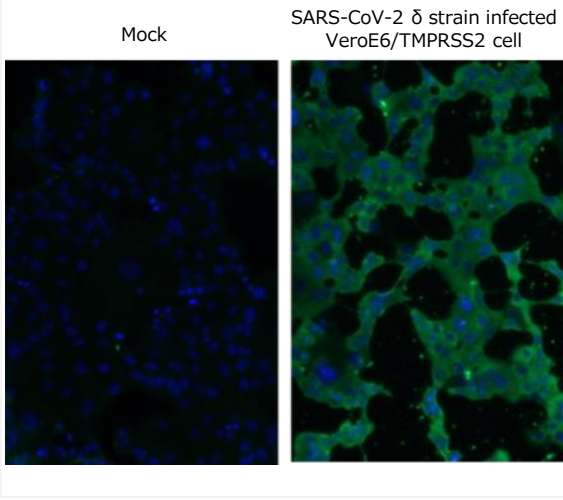
DATA IMAGES

Indirect ELISA



Detection of recombinant SARS-CoV-2 NCP by indirect ELISA.
Indirect ELISA detection of diluted at 125-4000 ng/mL recombinant SARS-CoV-2 nucleocapsid protein using SARS-CoV-2 nucleocapsid protein (NCP) monoclonal antibody (Catalog # SNCP2G) as capture antibody at concentration of 1 µg/mL, and Goat Anti-Mouse IgG H&L (Alexa Fluor® 488) preadsorbed (ab150117) was diluted at 1:5000 and used to detect the primary antibody.

Indirect immunofluorescent analysis



SARS-CoV-2 NCP antibody detects SARS-CoV-2 (COVID-19) Nucleocapsid protein by indirect immunofluorescent analysis
Sample: Mock and SARS-CoV-2 δ strain infected VeroE6/TMPRSS2 cells were fixed in formalin.
Green: 1st Ab. :SARS-CoV-2 (COVID-19) NCP stained by SARS-CoV-2 nucleocapsid protein (NCP) monoclonal antibody (Catalog # SNCP2G) diluted at 1 µg/mL. 2nd Ab. : Goat Anti-Mouse IgG H&L (Alexa Fluor® 488) (ab150113) diluted at 1 : 200.
Blue: Mounting medium with DAPI (ab104139).