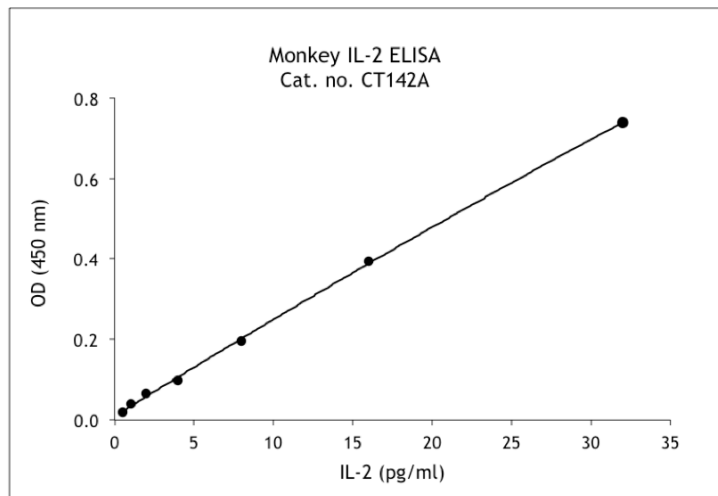


## Typical data Monkey IL-2 ELISA kit

Catalogue no.: CT142A (5-plate format)

### Validated for:

Rhesus macaque, Cynomolgus monkey, Pig-tailed macaque, Barbary macaque, Baboon, African green monkey



Recommended assay range: 0.5-32 pg/ml.

Sensitivity: 0.5 pg/ml.

Calibration: recombinant and natural rhesus macaque IL-2.

Type of sample: serum, plasma and culture supernatant.

### References list:

Polakos, N.K., Drane, D., Cox, J., Ng, P., Selby, M.J., Chien, D., O'Hagan, D.T., Houghton, M. and Paliard, X. 2001. *J. Immunol.* 166: 3589-3598

Van Rompay, K.K.A., Marthas, M.L. and Bischofberger, N. 2004. *Antiviral Res.* 63: 133-138

Rout, N., Greene, J., Yue, S., O'Connor, D., Johnson, P.R., Else, J.G., Exley, M.A. and Kaur, A. 2012. *PLoS Pathog.* 8: e1002928

De Swart, R.L., Kuiken, T., Timmermans, H.H., van Amerongen, G., van den Hoogen, B.G., Vos H.W., Neijens, H.J., Andeweg, A.C. and Osterhaus, A.D.M.E. 2002. *J. Virol.* 76: 11561-11569

De Waal, L., Power, U.F., Yüksel, S., van Amerongen, G., Nguyen, T.N., Niesters, H.G.M., de Swart, R.L. and Osterhaus, A.D.M.E. 2004. *Vaccine* 22: 915-922

Wang, C.Y., Finstad, C.L., Walfield, A.M., Sia, C., Sokoll, K.K., Chang, T-Y., De Fang, X., Hung, C.H., Hutter-Paier, B. and Windisch, M. 2007. *Vaccine* 25: 3041-3052

Zhang W., Ahmad G., Torben W., Noor Z., Le L., Damian R.T., Wolf R.F., White G.L., Chavez-Suarez M., Podesta R.B., Kennedy R.C., and Siddiqui A.A. 2010. *J. Infect. Dis.* 201: 1105-1112

More references can be found in our References Database on our website: [www.ucytech.com/references](http://www.ucytech.com/references).