

CD40 Antibody : B-B20 Azide free

HUMAN CD40 AZIDE FREE

CATALOGUE N° : 854.280.000

CLONE : B-B20

ISOTYPE : Mouse IgG1

IMMUNISATION : Raji cell line

HYBRIDOMA : Myeloma X63/AG.8653 x Balb/c spleen cells

SPECIFICITY : Recognises the Bp50 antigen, a 48 kDa protein

WORKSHOP : VI

QUANTITY : 200 µg / 200 µl

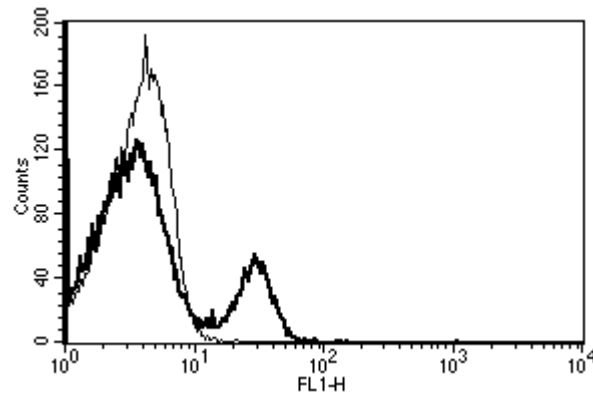
PURIFICATION : Ion exchange chromatography

FORMAT : Phosphate-buffered saline. Sterile-filtered through 0.22 µm and treated to remove endotoxins. Carrier and preservative free

STORAGE : Stable at +2-8°C for 12 months
For longer storage, freeze aliquots

APPLICATION : Suitable for flow cytometry
Stimulates B-cell proliferation together with IL-4
Immunoprecipitation : not tested
Western blot : not tested
Immunohistochemistry : not tested

REFERENCES : Challa A. et al., BC12 Leucocyte Typing Workshop VI, Kobe (1996)
De Goer de Herve M-G. et al., Blood, 2005; 106(8) : 2806-14
Durali D. et al., Blood, 2003; 102 : 4084-4089
Jeannin, P. et al., J Biol Chem, 1997; 272(25): 15613-9.
Kotowicz K. et al., BC12.1 Leucocyte Typing Workshop VI, Kobe (1996)
Puig-Kröger A. et al., Blood, 2001; 98 : 2175 - 2182
Vermot-Desroches C. et al., Immunology Letters 48 : 1-9 (1995)



A typical staining pattern with the B-B20 monoclonal antibody of lymphocytes

Version 3 - 01.08

For research use only