

CD34 Antibody : B-G25 Azide free

HUMAN CLASS I CD34 AZIDE FREE

CATALOGUE N° : 854.240.000

CLONE : B-G25

ISOTYPE : Mouse IgG1

IMMUNISATION : KG-1a cell line

HYBRIDOMA : Myeloma X63/AG.8653 x Balb/c spleen cells

SPECIFICITY : Recognises the Gp105-120 antigen, a 105-120 kDa protein

WORKSHOP : VI

QUANTITY : 200 µg / 200 µl

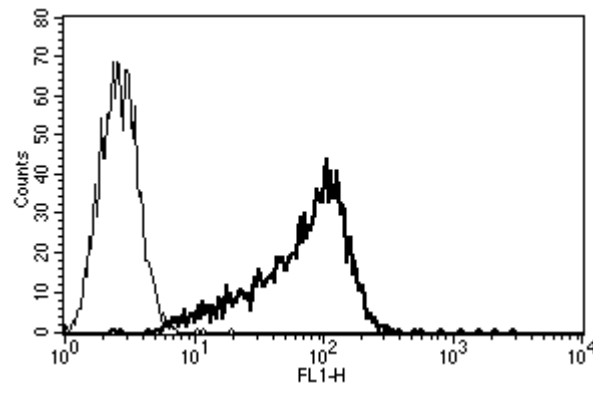
PURIFICATION : Ion exchange chromatography

FORMAT : Phosphate-buffered saline. Sterile-filtered through 0.22 µm and treated to remove endotoxins. Carrier and preservative free

STORAGE : Stable at +2-8°C for 12 months
For longer storage, freeze aliquots

APPLICATION : Suitable for flow cytometry
Triggers KG-1a cell aggregation
Immunoprecipitation : not tested
Western blot : not tested
Immunohistochemistry : not tested

OTHER : Ref : Nishio H. et al, MC7 Leucocyte Typing Workshop VI, Kobe (1996)
Janes HM. et al, MC7.1 Leucocyte Typing Workshop VI, Kobe (1996)
Canavo N. et al, MC7.2 Leucocyte Typing Workshop VI, Kobe (1996)



A typical staining pattern with the B-G25 monoclonal antibody of KG-1a cell line

Version 1 - 05.01

For research use only