

**CD20 Antibody : B-H20 Azide free**

HUMAN CD20 AZIDE FREE

**CATALOGUE N° :** 854.150.000

**CLONE :** B-H20

**ISOTYPE :** Mouse IgG2a

**IMMUNISATION :** Chronic Lymphoid Leukaemia cells (CLL)

**HYBRIDOMA :** Myeloma X63/AG.8653 x Balb/c spleen cells

**SPECIFICITY :** Recognises the B1, Bp35 antigen, a 33-37 kDa protein

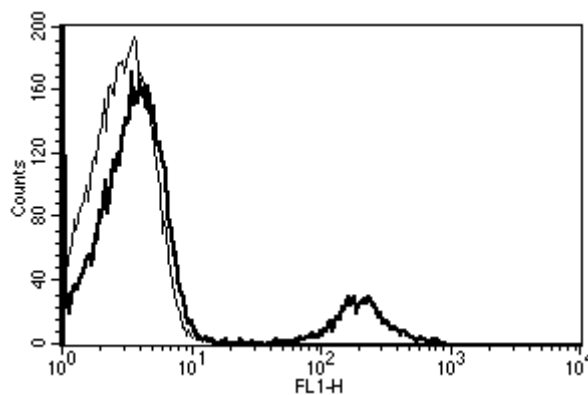
**QUANTITY :** 200 µg / 200 µl

**PURIFICATION :** Ion exchange chromatography

**FORMAT :** Phosphate-buffered saline. Sterile-filtered through 0.22 µm and treated to remove endotoxins. Carrier and preservative free

**STORAGE :** Stable at +2-8°C for 12 months  
For longer storage, freeze aliquots

**APPLICATION :** Suitable for flow cytometry  
Cytotoxic in association with the complement on CD20+ cells  
Immunoprecipitation : not tested  
Western blot : not tested  
Immunohistochemistry : not tested



*A typical staining pattern with the B-H20 monoclonal antibody of lymphocytes*

**Version 1 – 05.01**

**For research use only**