

CD10 Antibody : B-E3 Azide free

HUMAN CD10 AZIDE FREE

CATALOGUE N° : 854.090.000

CLONE : B-E3

ISOTYPE : Mouse IgG2a

IMMUNISATION : Daudi and Raji cell lines

HYBRIDOMA : Myeloma X63/AG.8653 x Balb/c spleen cells

SPECIFICITY : Recognises the Common Acute Lymphoblastic Leukemia Antigen (CALLA), a 100 kDa protein

QUANTITY : 200 µg / 200 µl

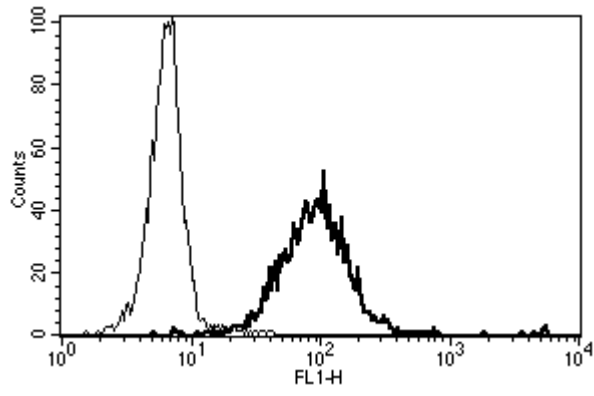
PURIFICATION : Ion exchange chromatography

FORMAT : Phosphate-buffered saline. Sterile-filtered through 0.22 µm and treated to remove endotoxins. Carrier and preservative free

STORAGE : Stable at +2-8°C for 12 months
For longer storage, freeze aliquots

APPLICATION : Suitable for flow cytometry
Does not inhibit the Mixed Lymphocyte Culture
Cytotoxic in association with the Rabbit Complement on CD10+ Cells
Immunoprecipitation : not tested
Western blot : not tested
Suitable for immunohistochemistry

REFERENCES : Geijtenbeek, T. B. et al., Blood,1999; 94(2): 754-64.
van den Berg, T. K. et al., J Immunol;1996; 157(7): 3130-8.



A typical staining pattern with the B-E3 monoclonal antibody of granulocytes

Version 2 - 01.08

For research use only