

**CD102 Antibody : B-T1 Azide free**

HUMAN CD102 AZIDE FREE

**CATALOGUE N° :** 852.760.000

**CLONE :** B-T1

**ISOTYPE :** Mouse IgG1

**IMMUNISATION :** ICAM-2 transfected CHO cell line

**HYBRIDOMA :** Myeloma X63/AG.8653 x Balb/c spleen cells

**SPECIFICITY :** Recognises the Intercellular Adhesion Molecule-2 (ICAM-2), a 55-65 kDa protein

**WORKSHOP :** VI

**QUANTITY :** 200 µg / 200 µl

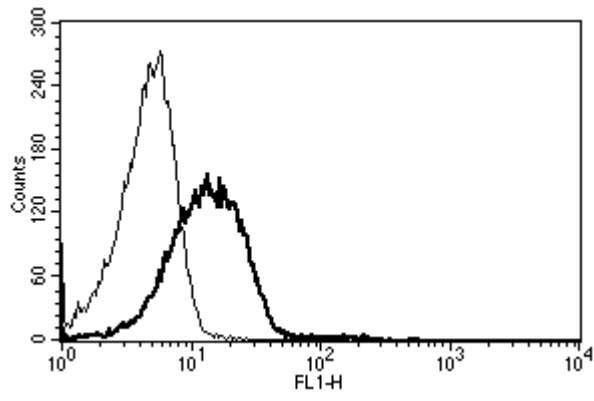
**PURIFICATION :** Ion exchange chromatography

**FORMAT :** Phosphate-buffered saline. Sterile-filtered through 0.22 µm and treated to remove endotoxins. Carrier and preservative free

**STORAGE :** Stable at +2-8°C for 12 months  
For longer storage, freeze aliquots

**APPLICATION :** Suitable for flow cytometry  
Inhibits cell adhesion and T cell activation  
Suitable for immunoprecipitation  
Western Blot : not tested  
Immunohistochemistry : not tested  
Recognises soluble antigen

**REFERENCES :** Xie,J. et al, J. Immunol.,1995;155:3619-28  
Takeuchi E. et al, AS25 Leukocyte Typing Workshop VI, Kobe (1996)  
Vermot-Desroches, C. et al.,Cell Immunol.,2005; 236(1-2): 86-91.  
Vermot-Desroches, C. et al., Cell Immunol.,2005; 236(1-2): 101-4.  
Vermot-Desroches C. et al, AS22.1 Leucocyte Typing Workshop VI, Kobe (1996)



*A typical staining pattern with the B-T1 monoclonal antibody of lymphocytes*

**Version 2 - 01.08**

**For research use only**