

CD2 Antibody : B-E2 Azide free

HUMAN CD2 AZIDE FREE

CATALOGUE N° : 852.500.000

CLONE : B-E2

ISOTYPE : Mouse IgG2b

IMMUNISATION : Human thymocytes

HYBRIDOMA : Myeloma X63/AG.8653 x Balb/c spleen cells

SPECIFICITY : Recognises the Lymphocyte Function associated Antigen-2 (LFA-2), a 50 kDa protein

WORKSHOP : V

QUANTITY : 200 µg / 200 µl

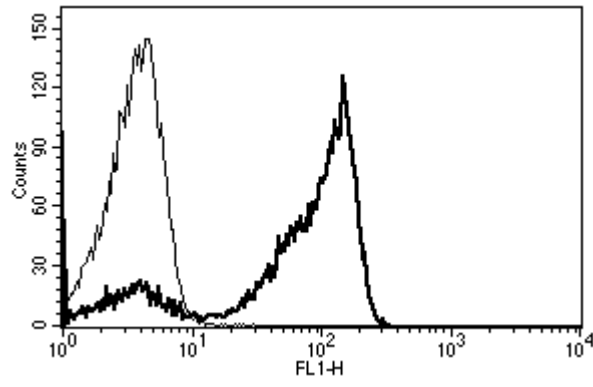
PURIFICATION : Ion exchange chromatography

FORMAT : Phosphate-buffered saline. Sterile-filtered through 0.22 µm and treated to remove endotoxins. Carrier and preservative free

STORAGE : Stable at +2-8°C for 12 months
For longer storage, freeze aliquots

APPLICATION : Suitable for flow cytometry
Inhibits Mixed Lymphocyte Culture
Immunoprecipitation : not tested
Western Blot : not tested
Suitable for immunohistochemistry

REFERENCES : Cavazzana-Calvo, M. et al., Br J Haematol.,1996; 93(1): 131-8.
Dupuis-Girod, S. et al., Pediatrics,2006; 118(1): e205-11.
Jabado, N. et al., Blood,1997; 90(12): 4743-8.
Jabado, N. et al., Pediatrics,1996; 98(3 Pt 1): 420-8.
Przepiorka, D. et al., Blood,1998; 92(11): 4066-71.
Racadot, E. et al., Bone Marrow Transplant,1995; 15(5): 669-77.
Tiberghien P. et al., Blood, 2001; 97 : 63 -72



A typical staining pattern with the B-E2 monoclonal antibody of lymphocytes

Version 2 - 01.08

For research use only