

CD130 Antibody : B-S12 Azide free

HUMAN CD130 AZIDE FREE

CATALOGUE N° : 852.110.000

CLONE : B-S12

ISOTYPE : Mouse IgG1

IMMUNISATION : Natural soluble gp130

HYBRIDOMA : Myeloma X63/AG.8653 x Balb/c spleen cells

SPECIFICITY : Recognises the Gp130, common subunit for IL-6, IL-11, OSM, LIF, CNTF, CT-1 receptors, a 130-140 kDa protein

WORKSHOP : VI

QUANTITY : 200 µg / 200 µl

PURIFICATION : Ion exchange chromatography

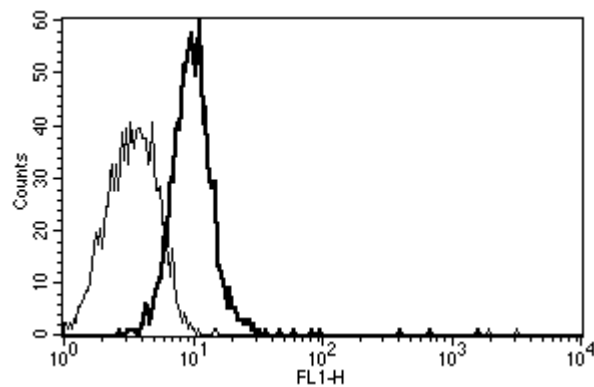
FORMAT : Phosphate-buffered saline. Sterile-filtered through 0.22 µm and treated to remove endotoxins. Carrier and preservative free

STORAGE : Stable at +2-8°C for 12 months
For longer storage, freeze aliquots

APPLICATION : Suitable for flow cytometry
Activates cells carrying gp130
Induces gp130 activation, Jak 1, Jak 2, Stat 1 and Stat 3 phosphorylation
Suitable for immunoprecipitation and western blot
Immunohistochemistry : not tested
Recognises the soluble antigen

REFERENCES : Ancey, C. et al., Cytokine,2002; 18(4): 199-205.
Ancey, C. et al., Cardiovasc Res.,2003; 59(1): 78-85.
Autissier, P. et al., Int Immunol.,1998; 10(12): 1881-9.
Fourcin, M. et al., J Biol Chem.,1996; 271(20): 11756-60.
Giese B. et al., J. Biol. Chem., 2003; 278 : 39205 - 39213
Gu, Z. J. et al.,Leukemia,2000; 14(1): 188-97.
Hammacher, A. et al., J Biol Chem.,1998; 273(35): 22701-7.
Hammacher, A. et al.,Biochem,2000; J 345 Pt 1: 25-32.
Horsten, U. et al.,J Biol Chem.,1997; 272(38): 23748-57.
Jover, R. et al., Faseb J.,2002; 16(13): 1799-801.
Kallen, K. J. et al.,J Biol Chem.,1999; 274(17): 11859-67.

Kube D. et al., Blood, 2001; 98 : 762 - 770
Kurth, I. et al., J Immunol.,1999; 162(3): 1480-7.
Kurth, I. et al.,J Immunol.,2000; 164(1): 273-82.
Lebeau, B. et al.,FEBS Lett.,1997; 407(2): 141-7.
Müller-Newen G. et al., J. Biol. Chem., 2000; 275 (7) : 4578 - 4586
Olivier, C. et al., J Biol Chem.,2000; 275(8): 5648-56.
Puthier, D. et al.,Blood,1996; 88(12): 4659-66.
Rebouissou C. et al., Blood, 1998; 91(12) : 4727 - 4737
Selander K.S. et al., Cancer Res., 2004; 64(19): 6924 - 6933
Simpson, R. J. et al.,Protein Sci.,1997; 6(5): 929-55.
Thiel, S. et al.,Biochem,1998; J 330 (Pt 1): 47-54.
Voisin M-B. et al., J. Biol. Chem., 2002; 277(16) : 13682 - 13692
Wang, Y. D. et al., Int Immunol.,2002; 14(6): 599-603.
Wijdenes J. et al., Eur. J. Immunol., 1995; 25(12): 3474-81



A typical staining pattern with the B-S12 monoclonal antibody of Eahy 926 cell line