

## CD130 Antibody : B-P8 Azide free

HUMAN CD130 AZIDE FREE

**CATALOGUE N° :** 852.080.000

**CLONE :** B-P8

**ISOTYPE :** Mouse IgG1

**IMMUNISATION :** Natural soluble gp130

**HYBRIDOMA :** Myeloma X63/AG.8653 x Balb/c spleen cells

**SPECIFICITY :** Recognises the Gp130, common subunit for IL-6, IL-11, OSM, LIF, CNTF, CT-1 receptors, a 130-140 kDa protein

**WORKSHOP :** VI

**QUANTITY :** 200 µg / 200 µl

**PURIFICATION :** Ion exchange chromatography

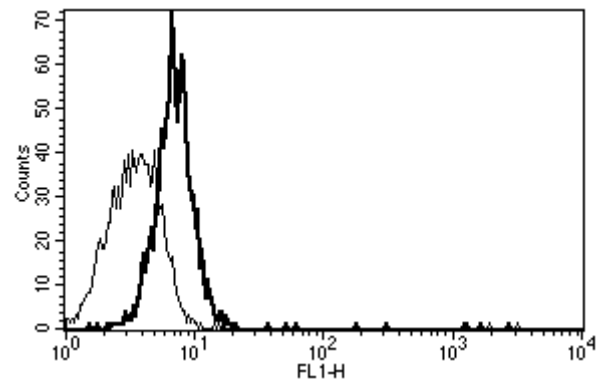
**FORMAT :** Phosphate-buffered saline. Sterile-filtered through 0.22 µm and treated to remove endotoxins. Carrier and preservative free

**STORAGE :** Stable at +2-8°C for 12 months  
For longer storage, freeze aliquots

**APPLICATION :** Suitable for flow cytometry  
Inhibits CNTF activity and binding to gp130  
Induces gp130 activation, Jak 1, Jak 2, Stat 1 and Stat 3 phosphorylation  
Recognises the soluble antigen

**REFERENCES :** Aoki, Y. et al., Blood,2001; 98(10): 3042-9.  
Chevalier, S. et al., J Biol Chem.,1996; 271(25): 14764-72.  
Giese B. et al., J. Biol. Chem., 2003; 278 : 39205 - 39213  
Giese, B. et al.,J Cell Sci.,2005; 118(Pt 21): 5129-40.  
Gu, Z. J. et al.,Leukemia,2000; 14(1): 188-97.  
Gu, Z. J. et al.,J Immunol Methods,1996; 190(1): 21-7.  
Horsten, U. et al., J Biol Chem.,1997; 272(38): 23748-57.  
Kurth, I. et al., J Immunol.,2000; 164(1): 273-82.  
Lebeau, B. et al., FEBS Lett.,1997; 407(2): 141-7.  
Müller-Newen G. et al., J. Biol. Chem., 2000; 275 (7) : 4578 - 4586  
Olivier, C. et al.,J Biol Chem.,2000; 275(8): 5648-56.  
Rebouissou C. et al., Blood, 1998; 91 : 4727 - 4737

Simpson, R. J. et al., Protein Sci., 1997; 6(5): 929-55.  
Timmermann, A. et al., Eur J Biochem., 2002; 269(11):  
2716-26.  
Wijdenes J. et al., Eur. J. Immunol., 1995; 25: 3474-81



*A typical staining pattern with the B-P8 monoclonal antibody of Eahy 926 cell line*

**Version 4 - 01.08**

**For research use only**