

CD130 Antibody : B-R3 Azide free

HUMAN CD130 AZIDE FREE

CATALOGUE N° : 852.060.000

CLONE : B-R3

ISOTYPE : Mouse IgG2a

IMMUNISATION : Natural soluble gp130

HYBRIDOMA : Myeloma X63/AG.8653 x Balb/c spleen cells

SPECIFICITY : Recognises the Gp130, common subunit for IL-6, IL-11, OSM, LIF, CNTF, CT-1 receptors, a 130-140 kDa protein

WORKSHOP : VI

QUANTITY : 200 µg / 200 µl

PURIFICATION : Ion exchange chromatography

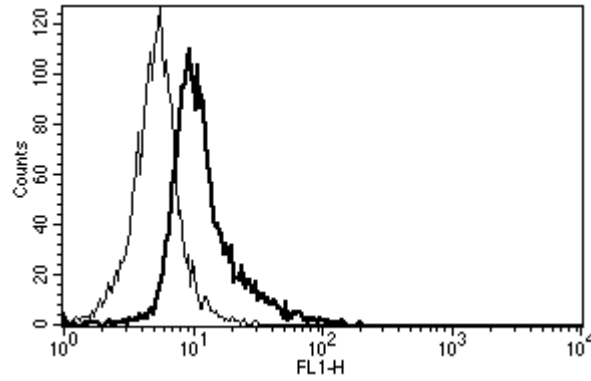
FORMAT : Phosphate-buffered saline. Sterile-filtered through 0.22 µm and treated to remove endotoxins. Carrier and preservative free

STORAGE : Stable at +2-8°C for 12 months
For longer storage, freeze aliquots

APPLICATION : Suitable for flow cytometry
Inhibits IL-6, IL-11, CNTF, LIF and OSM activities
Inhibits OSM and CNTF binding to gp130
Immunohistochemistry : not tested
Recognises the soluble antigen

REFERENCES : Aoki, Y. et al., Blood,2001; 98(10): 3042-9.
Auguste, P. et al., J Biol Chem.,1997; 272(25): 15760-4.
Blanchard M. et al., J. Biol. Chem., 1998; 273(33): 20886-20893
Burger R. et al., The Haematology Journal, 2001; 2(1): 42-53
Chevalier S. et al., J. Biol. Chem., 1996; 271(25): 14764-72
Duplomb L. et al., Endocrinology, 2003; 144 : 5381 - 5389
Gu, Z. J. et al., Blood,1996; 88(10): 3972-86.
Gu, Z. J. et al., Leukemia,2000; 14(1): 188-97.
Gu, Z. J. et al., J Immunol Methods,1996; 190(1): 21-7.
Jover, R. et al., Faseb J.,2002; 16(13): 1799-801.
Kube D. et al., Blood, 2001; 98(3) : 762 - 770

Lebeau, B. et al., FEBS Lett., 1997; 407(2): 141-7
Memoli, B., Nephrol. Dial. Transplant, 2001; 16(6):
A184-186.
Memoli, B. et al., J Am Soc Nephrol., 2005; 16(4): 1099-107.
Müller-Newen G. et al., J. Biol. Chem., 2000; 275 (7) : 4578
- 4586
Olivier, C. et al., J Biol Chem., 2000; 275(8): 5648-56.
Taupin J-L. et al., J. Biol. Chem., 2001; 276(51) : 47975 -
47981
Thiel, S. et al., Biochem., 1998; J 330 (Pt 1): 47-54.



A typical staining pattern with the B-R3 monoclonal antibody of Eahy 926 cell line

Version 4 - 01.08

For research use only