

CD126 Antibody : B-R6 Azide free

HUMAN CD126 AZIDE FREE

CATALOGUE N° : 852.030.000

CLONE : B-R6

ISOTYPE : Mouse IgG1

IMMUNISATION : gp80 transfected CHO cell line

HYBRIDOMA : Myeloma X63/AG.8653 x Balb/c spleen cells

SPECIFICITY : Recognises the Interleukin-Ra subunit, IL-6 Ra, IL-6 R, a 80 kDa protein

WORKSHOP : V - vi

QUANTITY : 200 µg / 200 µl

PURIFICATION : Ion exchange chromatography

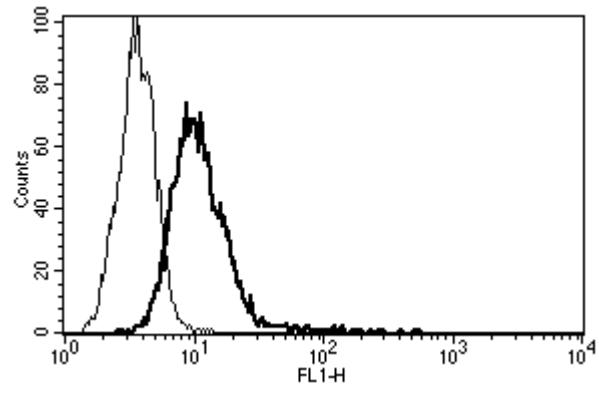
FORMAT : Phosphate-buffered saline. Sterile-filtered through 0.22 µm and treated to remove endotoxins. Carrier and preservative free

STORAGE : Stable at +2-8°C for 12 months
For longer storage, freeze aliquots

APPLICATION : Suitable for flow cytometry
Blocks IL-6 induced proliferation of XG-1 cells
Inhibits IL-6 binding to its receptor
Suitable for immunoprecipitation and immunohistochemistry
Western Blot : not tested
Recognises soluble and membrane bound IL-6 R

OTHER : Kd : 1.22 nM

REFERENCES : Burger R. et al., The Haematology Journal, 2001; 2: 42-53
Clement C. et al, CR.3.2 Leucocyte Typing V, Boston, 1993
Dubois B. et al., J. Immunol., 1999; 162 : 3428 -3436
Dubois B. et al., J. Immunol., 1998; 161 : 2223 -2231
Gu, Z. J. et al., Leukemia,2000; 14(1): 188-97.
Menetrier-Caux C. et al., Blood, 1998; 92 : 4778 - 4791
Muller-Newen, G. et al., Eur J Biochem.,1996; 236(3): 837-42.



A typical staining pattern with the B-R6 monoclonal antibody of U266 cell line

Version 3 - 01.08

For research use only