

## E2-Tag Mouse Monoclonal Antibody

Catalog No: #T609

Orders: [order@signalwayantibody.com](mailto:order@signalwayantibody.com)Support: [tech@signalwayantibody.com](mailto:tech@signalwayantibody.com)

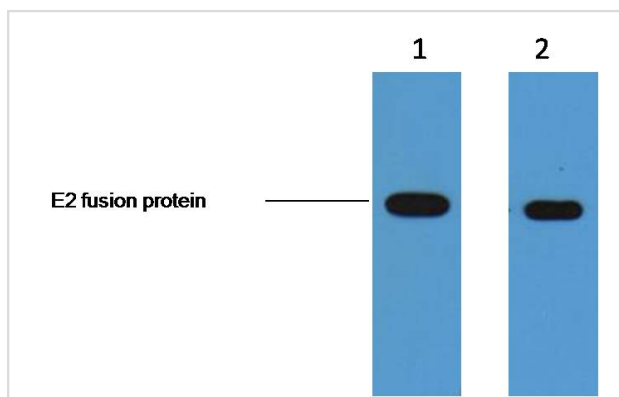
## Description

Product Name	E2-Tag Mouse Monoclonal Antibody
Host Species	Mouse
Clonality	Monoclonal
Isotype	IgG1
Purification	Affinity-chromatography
Applications	WB
Species Reactivity	Tag
Specificity	E2- Tag antibody can recognize C-terminal, internal, and N-terminal E2-tagged proteins.
Immunogen Type	Peptide-KLH
Immunogen Description	E2-tag peptide GVSSTSSDFRDR conjugated to KLH.
Target Name	E2-Tag
SDS-PAGE MW	N/A
Concentration	1.0mg/ml
Formulation	Mouse IgG in phosphate buffered saline , pH 7.4, 150mM NaCl, 0.02% sodium azide and 50% glycerol.
Storage	Store at -20 °C.Stable for 12 months from date of receipt

## Application Details

WB: 1:3000~1:10000

## Images



2ug E2 fusion protein+ Primary antibody dilution at  
 1γ • 1:5,000 2γ • 1:10,000

Note: This product is for in vitro research use only and is not intended for use in humans or animals.