

HSV-Tag Mouse Monoclonal Antibody

Catalog No: #T607

Orders: order@signalwayantibody.comSupport: tech@signalwayantibody.com

Description

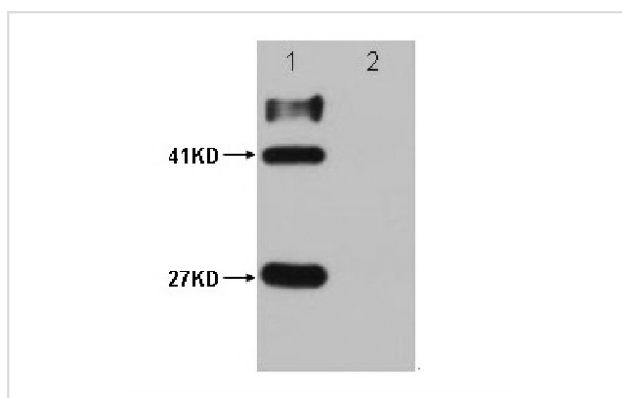
Product Name	HSV-Tag Mouse Monoclonal Antibody
Host Species	Mouse
Clonality	Monoclonal
Isotype	IgG1
Purification	Affinity-chromatography
Applications	WB IF/ICC
Species Reactivity	Tag
Specificity	HSV-tag mouse monoclonal antibody detects endogenous levels of internal, C-terminal, and N-terminal HSV-tagged proteins.
Immunogen Type	Peptide-KLH
Immunogen Description	A synthetic peptide QPELAPEDPED coupled to KLH.
Target Name	HSV-Tag
SDS-PAGE MW	N/A
Concentration	1.0mg/ml
Formulation	Mouse IgG1 in phosphate buffered saline (without Mg ²⁺ and Ca ²⁺), pH 7.4, 150mM NaCl, 0.02% sodium azide and 50% glycerol.
Storage	Store at -20 °C. Stable for 12 months from date of receipt

Application Details

WB: 1:3000~1:10000

IF/ICC: 1:200

Images



HSV-Tag Mouse Monoclonal antibody Lane 1: GST- HSV fusion protein (27KD); MBP- HSV 2 fusion protein (41KD)
Lane 2: GST protein; MBP protein

Note: This product is for in vitro research use only and is not intended for use in humans or animals.