

# VSV-G-Tag Mouse Monoclonal Antibody

Catalog No: #T606



Orders: [order@signalwayantibody.com](mailto:order@signalwayantibody.com)

Support: [tech@signalwayantibody.com](mailto:tech@signalwayantibody.com)

## Description

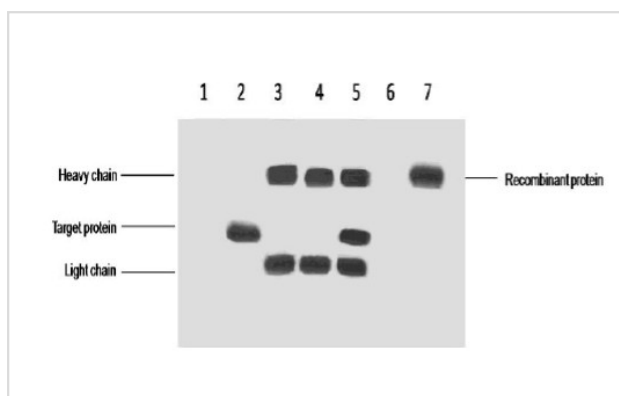
Product Name	VSV-G-Tag Mouse Monoclonal Antibody
Host Species	Mouse
Clonality	Monoclonal
Isotype	IgG1
Purification	Affinity-chromatography
Applications	WB IF/ICC
Species Reactivity	Tag
Specificity	VSV-G-tag mouse monoclonal antibody detects endogenous levels of internal, C-terminal, and N-terminal VSV-G- tagged proteins.
Immunogen Type	Peptide-KLH
Immunogen Description	A synthetic peptide YTDIEMNRLGK coupled to KLH.
Target Name	VSV-G-Tag
SDS-PAGE MW	N/A
Concentration	1.0mg/ml
Formulation	Mouse IgG1 in phosphate buffered saline (without Mg <sup>2+</sup> and Ca <sup>2+</sup> ), pH 7.4, 150mM NaCl, 0.02% sodium azide and 50% glycerol.
Storage	Store at -20 °C.Stable for 12 months from date of receipt

## Application Details

WB: 1:3000~1:10000

IF/ICC: 1:200

## Images



IP antibody used 5ug VSV-G Mouse IgG1 per ml  
 Lysate used WB 1:5000 1γ • untransfected 293 cell lysate  
 2γ • transfected 293 cell lysate with VSV-G-tag fusion protein  
 3γ • IP(untransfected 293+anti-VSV-G mAb+Protein G agarose)  
 4γ • IP (transfected 293+ normal Mouse IgG+Protein G agarose)  
 5γ • IP (transfected 293+anti-VSV-G mAb+ Protein G agarose)  
 6γ • IP (transfected 293+Protein G)  
 7γ • Recombinant protein (E.coli)

Note: This product is for in vitro research use only and is not intended for use in humans or animals.