

# Flag-tag Mouse Monoclonal Antibody (2C5)- HRP conjugated

Catalog No: #T524

Orders: [order@signalwayantibody.com](mailto:order@signalwayantibody.com)Support: [tech@signalwayantibody.com](mailto:tech@signalwayantibody.com)

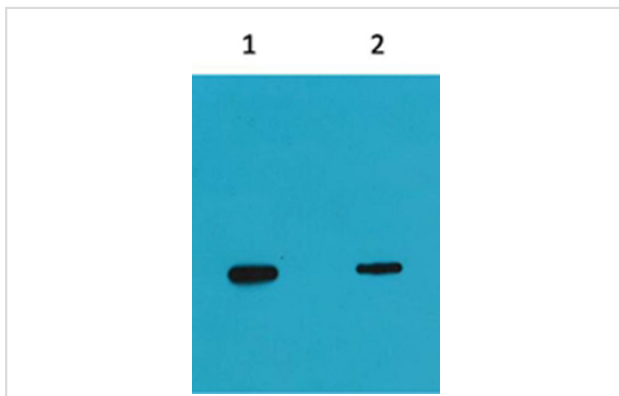
## Description

Product Name	Flag-tag Mouse Monoclonal Antibody (2C5)- HRP conjugated
Host Species	Mouse
Clonality	Monoclonal
Purification	Affinity purification using immunogen.
Applications	WB
Species Reactivity	N/A
Specificity	The Flag tag antibody can recognize C-terminal, internal, and N-terminal Flag-tag fusion?proteins.
Target Name	Flag-tag
Concentration	1.0mg/ml
Formulation	Mouse IgG1 in phosphate buffered saline (without Mg <sup>2+</sup> and Ca <sup>2+</sup> ), pH 7.4, 150mM NaCl, 0.02% sodium azide and 50% glycerol.
Storage	Store at -20°C

## Application Details

Western blotting: 1:5000~1:10000

## Images



Western blot analysis of Recombinant protein, using #T524 diluted at 1) 1:5,000, 2) 1:10,000.

## Background

The DYKDDDDK peptide (Flag-tag) is a small component of an epitope which does not appear to interfere with the bioactivity or the biodistribution of the recombinant protein. It has been used extensively as a general epitope tag in expression vectors. It can be used for affinity chromatography, then used to separate recombinant, overexpressed protein from wild-type protein expressed by the host organism. It can also be used in the isolation of protein complexes with multiple subunits. A Flag-tag can be used in many different assays that require recognition by an antibody. If there is no antibody against the studied protein, adding a Flag-tag to this protein allows one to follow the protein with an antibody against the Flag sequence.

---

Note: This product is for in vitro research use only and is not intended for use in humans or animals.