

mCherry -Tag Rabbit Polyclonal Antibody

Catalog No: #T521

Orders: order@signalwayantibody.comSupport: tech@signalwayantibody.com

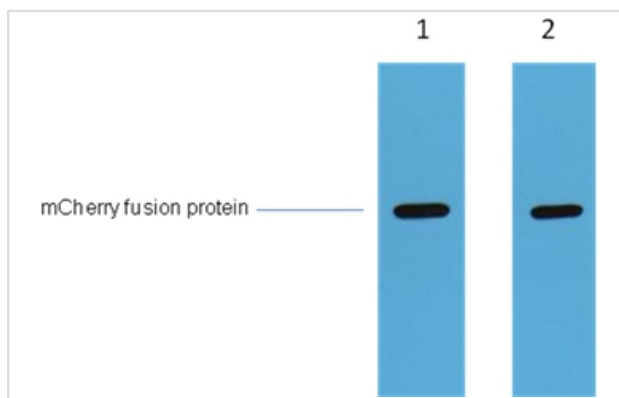
Description

Product Name	mCherry -Tag Rabbit Polyclonal Antibody
Host Species	Rabbit
Clonality	Polyclonal
Purification	Affinity purification using immunogen.
Applications	WB
Species Reactivity	Hu Ms Rt
Specificity	The mCherry tag antibody can recognize mCherry tag fusion proteins.
Target Name	mCherry-Tag
Concentration	1.0mg/ml
Formulation	Rabbit IgG in phosphate buffered saline (without Mg ²⁺ and Ca ²⁺), pH 7.4, 150mM NaCl, 0.02% sodium azide and 50% glycerol.
Storage	Store at -20°C

Application Details

Western blotting: 1:5000~1:10000

Images



1ug mCherry fusion protein+ Primary antibody #T521 dilution at 1:5,000 (lane 1) and 1:10,000 (lane 2).

Background

mCherry is a fluorophore (a fluorescent molecule) used in biotechnology as a tracer to follow the flow of fluids, as a marker when tagged to molecules and cells components. mCherry is a monomeric fluorescent construct with peak absorption/emission at 587nm and 610nm, respectively. It is resistant to photobleaching and is stable. mCherry is sometimes preferred to other fluorophores due to its colour, as well as its photostability compared to other monomeric fluorophores.

Note: This product is for in vitro research use only and is not intended for use in humans or animals.