

mCherry Mouse Monoclonal Antibody

Catalog No: #T515

Orders: order@signalwayantibody.comSupport: tech@signalwayantibody.com

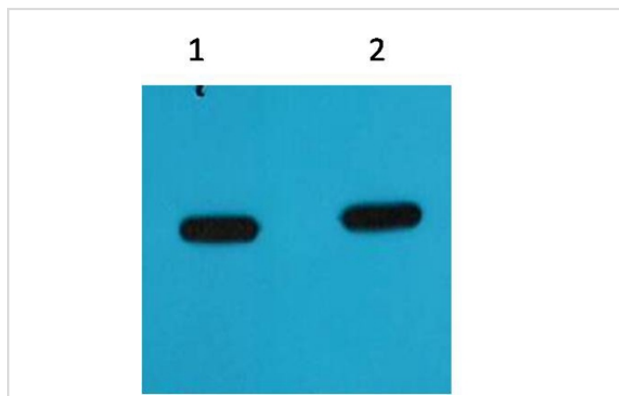
Description

Product Name	mCherry Mouse Monoclonal Antibody
Host Species	Mouse
Clonality	Monoclonal
Purification	Affinity purification using immunogen.
Applications	WB IP
Species Reactivity	N/A
Specificity	The mCherry tag antibody can recognize mCherry and mCherry tag fusion proteins.
Target Name	mCherry
Concentration	1.0mg/ml
Formulation	Mouse IgG1 in phosphate buffered saline (without Mg ²⁺ and Ca ²⁺), pH 7.4, 150mM NaCl, 0.02% sodium azide and 50% glycerol.
Storage	Store at -20°C

Application Details

Western blotting: 1:5000~1:10000

Images



Western blot analysis of mCherry recombinant protein, using #T515 diluted at 1) 1:5,000 2) 1:10,000.

Background

mCherry is a fluorophore (a fluorescent molecule) used in biotechnology as a tracer to follow the flow of fluids, as a marker when tagged to molecules and cells components. mCherry is a monomeric fluorescent construct with peak absorption/emission at 587 nm and 610 nm, respectively. It is resistant to photobleaching and is stable. mCherry is sometimes preferred to other fluorophores due to its colour, as well as its photostability compared to other monomeric fluorophores.

Note: This product is for in vitro research use only and is not intended for use in humans or animals.