

Plant GST Rabbit Polyclonal Antibody

Catalog No: #T514

Orders: order@signalwayantibody.comSupport: tech@signalwayantibody.com

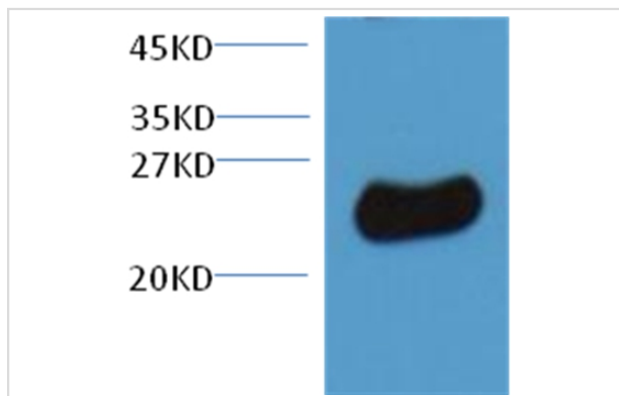
Description

Product Name	Plant GST Rabbit Polyclonal Antibody
Host Species	Rabbit
Clonality	Polyclonal
Purification	Affinity purification using immunogen.
Applications	WB
Species Reactivity	Nicotiana tabacum
Specificity	The Plant GST rabbit polyclonal antibody can recognize endogenous Plant GST?proteins.
Target Name	Plant GST
Concentration	1.0mg/ml
Formulation	Rabbit IgG in phosphate buffered saline (without Mg ²⁺ and Ca ²⁺), pH 7.4, 150mM NaCl, 0.02% sodium azide and 50% glycerol.
Storage	Store at -20°C

Application Details

Western blotting: 1:1000~1:3000

Images



10ug total Nicotiana tabacum lysate + Primary antibody #T514 dilution at 1:3000.

Background

The soluble glutathione transferases (GSTs) are encoded by a large and diverse gene family in plants. GSTs are predominantly expressed in the cytosol, where their GSH-dependent catalytic functions include the conjugation and resulting detoxification of herbicides, the reduction of organic hydroperoxides formed during oxidative stress and the isomerization of maleylacetoacetate to fumarylacetoacetate, a key step in the catabolism of tyrosine. GSTs also have non-catalytic roles, binding flavonoid natural products in the cytosol prior to their deposition in the vacuole.

Note: This product is for in vitro research use only and is not intended for use in humans or animals.