

DYKDDDDK-Tag Mouse Monoclonal Antibody

Catalog No: #T510



Package Size: #T510-1 50ul #T510-2 100ul

Orders: order@signalwayantibody.com

Support: tech@signalwayantibody.com

Description

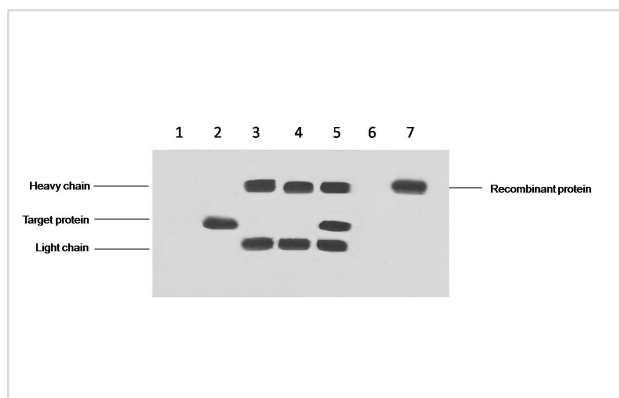
Product Name	DYKDDDDK-Tag Mouse Monoclonal Antibody
Host Species	Mouse
Clonality	Monoclonal
Purification	Affinity-chromatography
Applications	WB IF/ICC
Species Reactivity	Tag
Immunogen Type	Peptide-KLH
Immunogen Description	A synthetic peptide DYKDDDDK coupled to KLH.
Target Name	DYKDDDDK-Tag
SDS-PAGE MW	N/A
Formulation	Mouse IgG1 in phosphate buffered saline (without Mg ²⁺ and Ca ²⁺), pH 7.4, 150mM NaCl, 0.02% sodium azide and 50% glycerol.
Storage	Store at -20 °C.Stable for 12 months from date of receipt

Application Details

WB: 1:3000~1:10000

IF/ICC: 1:200

Images



DYKDDDDK-Tag (FLAG tag) Mouse Monoclonal antibody
 A: HEK 293 cell lysate without transfected B: HEK 293 cell lysate transfected with FLAG-tag protein C: IP (PBS + anti-FLAG mAb 4°C overnight) D: IP (HEK293 transfected+protein G+anti- FLAG mAb 4°C overnight) E: IP (HEK293 transfected+RIPA+Protein G 4°C overnight) F: Multi Tag Recombinant protein (expressed in E.coli) TP=Target Protein HC=Heavy chain LC=Light Chain

Background

DYKDDDDK-Tag (FLAG tag) Mouse mAb is part of the series of Tag antibodies, the excellent quality in the research. FLAG tag antibody is a highly sensitive and affinity PAB applicable to FLAG-tagged fusion protein detection. FLAG tag antibody can detect FLAG tags in internal, C-terminal, or N-terminal recombinant proteins.

Note: This product is for in vitro research use only and is not intended for use in humans or animals.