

HA-Tag Mouse Monoclonal Antibody

Catalog No: #T506



Package Size: #T506-1 50ul #T506-2 100ul

Orders: order@signalwayantibody.com

Support: tech@signalwayantibody.com

Description

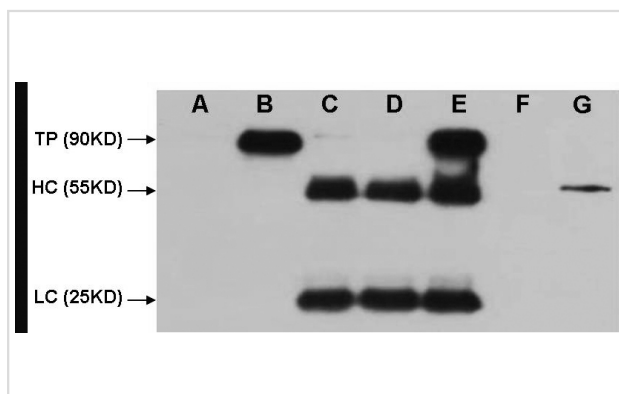
Product Name	HA-Tag Mouse Monoclonal Antibody
Host Species	Mouse
Clonality	Monoclonal
Purification	Affinity-chromatography
Applications	WB IF/ICC
Species Reactivity	Tag
Specificity	HA-Tag Mouse Monoclonal antibody detects endogenous levels of internal, C-terminal, or N-terminal HA-tagged recombinant proteins.
Immunogen Type	Peptide-KLH
Immunogen Description	A synthetic peptide YPYDVPDYA coupled to KLH.
Target Name	HA-Tag
SDS-PAGE MW	N/A
Formulation	Mouse IgG1 in phosphate buffered saline (without Mg ²⁺ and Ca ²⁺), pH 7.4, 150mM NaCl, 0.02% sodium azide and 50% glycerol.
Storage	Store at -20 °C. Stable for 12 months from date of receipt

Application Details

WB: 1:3000~1:10000

IF/ICC: 1:200

Images



HA-Tag Mouse Monoclonal antibody A: HEK 293 cell lysate without transfected B: HEK 293 cell lysate transfected with HA-tag protein C: IP (HEK 293 cell without transfected + anti-HA mAb 4°C overnight) D: IP (PBS + anti-HA mAb 4°C overnight) E: IP (HEK293 transfected+protein G+anti-HA mAb 4°C overnight) F: IP (HEK293 transfected+RIPA+Protein G 4°C overnight) G: Multi Tag Recombinant protein (expressed in E.coli) TP=Target Protein HC=Heavy chain LC=Light Chain

Note: This product is for in vitro research use only and is not intended for use in humans or animals.