

DYKDDDDK-Tag Rabbit Polyclonal Antibody

Catalog No: #T503



Package Size: #T503-1 50ul #T503-2 100ul

Orders: order@signalwayantibody.com

Support: tech@signalwayantibody.com

Description

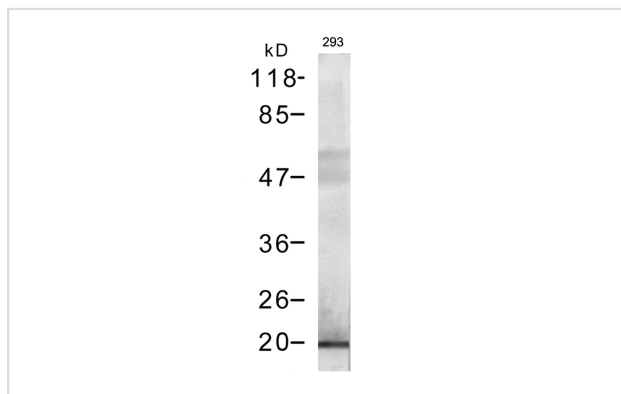
Product Name	DYKDDDDK-Tag Rabbit Polyclonal Antibody
Host Species	Rabbit
Clonality	Polyclonal
Purification	Antibodies were produced by immunizing rabbits with synthetic peptide and KLH conjugates. Antibodies were purified by affinity-chromatography using epitope-specific peptide.
Applications	WB
Specificity	The antibody detects transfected proteins containing DYKDDDDK tag. The antibody recognizes the DYKDDDDK-tag fused to either the amino- or carboxy-terminus of targeted proteins in transfected cells.
Immunogen Type	Peptide-KLH
Immunogen Description	Peptide sequence (DYKDDDDK) derived from Human.
Target Name	DYKDDDDK-Tag
Concentration	1.0mg/ml
Formulation	Supplied at 1.0mg/mL in phosphate buffered saline (without Mg ²⁺ and Ca ²⁺), pH 7.4, 150mM NaCl, 0.02% sodium azide and 50% glycerol.
Storage	Store at -20°C for long term preservation (recommended). Store at 4°C for short term use.

Application Details

Predicted MW: kd

Western blotting: 1:500~1:1000

Images



Western blot analysis of extracts from 293 cells transfected with DYKDDDDK-tagged Bad using Anti-DYKDDDDK Polyclonal Antibody #T503.

Background

Epitope tags are artificial epitopes useful for the labeling and detection of proteins. Epitope tags - short amino acid sequences are 'fused' to the N- or C-terminus of the protein.

erpe K. (2003) Appl Microbiol Biotechnol; 60(5):523-533.

Einhauer A, et al. (2001) J Biochem Biophys Methods; 49(1-3):455-465.

Brizzard, B.L. et al. (1994) Biotechniques; 16:730

Published Papers

Juliette Gafni, Xin Cong, Sylvia F. Chen et al., Calpain-1 Cleaves and Activates Caspase-7J., Biol. Chem., 284: 25441 - 25449(2009)

[PMID:19617626](#)

Note: This product is for in vitro research use only and is not intended for use in humans or animals.