

Histone H3 (Di-Methyl-Lys27) Monoclonal Antibody

Catalog No: #HW159



Package Size: #HW159-1 50ul #HW159-2 100ul

Orders: order@signalwayantibody.com

Support: tech@signalwayantibody.com

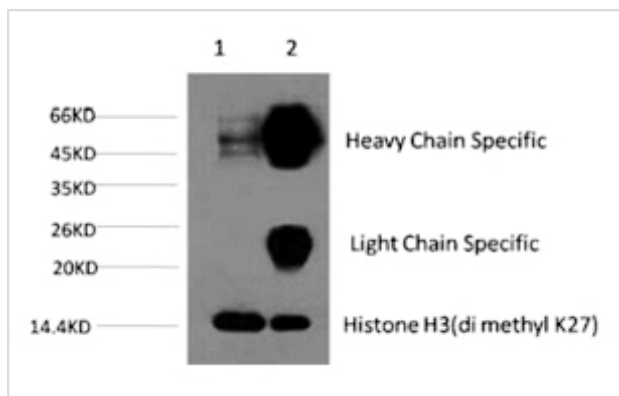
Description

Product Name	Histone H3 (Di-Methyl-Lys27) Monoclonal Antibody
Host Species	Mouse
Clonality	Monoclonal
Purification	The antibody was affinity-purified from antiserum by affinity-chromatography
Applications	WB IP
Species Reactivity	Hu Ms Rt
Specificity	The antibody detects endogenous Histone H3 (di methyl K27) protein.
Immunogen Type	peptide
Immunogen Description	di methyl peptide at K27 of Histone H3
Target Name	Histone H3
Modification	Di-Methyl-Lys27
Other Names	HIST1H3A; H3FA; HIST1H3B; H3FL; HIST1H3C; H3FC; HIST1H3D; H3FB; HIST1H3E; H3FD; HIST1H3F; H3FI; HIST1H3G; H3FH; HIST1H3H; H3FK; HIST1H3I; H3FF; HIST1H3J; H3FJ; Histone H3.1; Histone H3/a; Histone H3/b; Histone H3/c; Histone H3/d; Histone H3/f; Histone H3/
Accession No.	Swiss-Prot: P68431/Q71DI3/P84243NCBI Gene ID: 8350/8351/8352/8353/8354/8355/8356/8357/8358/8968
SDS-PAGE MW	15kd
Concentration	1mg/ml
Formulation	PBS, pH 7.4, containing 0.02% sodium azide as Preservative and 50% Glycerol.
Storage	Store at -20°C/1 year

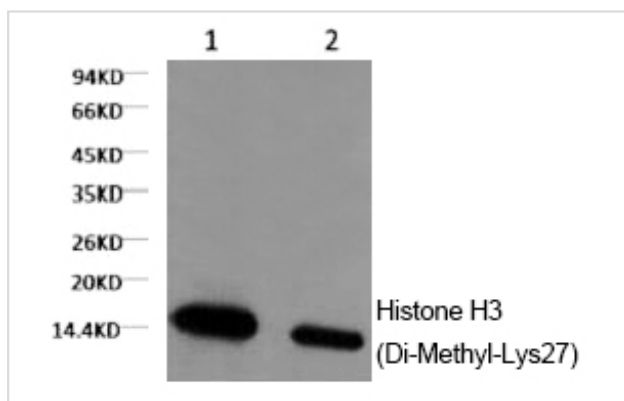
Application Details

Western blotting: 1:1000-3000 IP:1:200

Images



- 1) Input: HeLa Cell Lysate
- 2) IP product: IP dilute 1:200



Western blot analysis of HeLa, diluted at
1) 1:1000
2) 1:3000

Note: This product is for in vitro research use only and is not intended for use in humans or animals.