

Acetyl Lysine Monoclonal Antibody

Catalog No: #HW098



Package Size: #HW098-1 50ul #HW098-2 100ul

Orders: order@signalwayantibody.comSupport: tech@signalwayantibody.com

Description

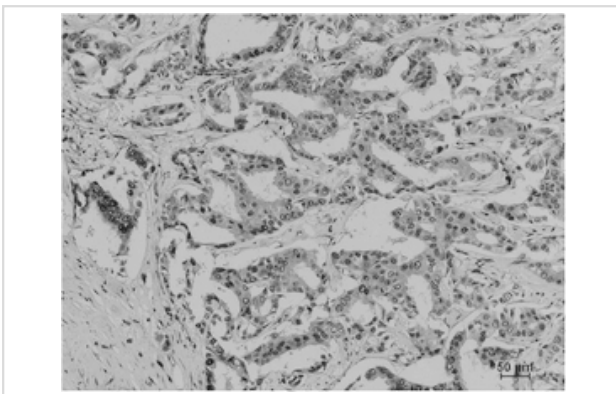
| | |
|-----------------------|--|
| Product Name | Acetyl Lysine Monoclonal Antibody |
| Host Species | Mouse |
| Clonality | Monoclonal |
| Purification | The antibody was affinity-purified from antiserum by affinity-chromatography |
| Applications | WB IHC |
| Species Reactivity | All |
| Specificity | The antibody detects endogenous Acetyl Lysine protein. |
| Immunogen Type | Protein |
| Immunogen Description | Purified Protein |
| Accession No. | Swiss-Prot: NCBI Gene ID: |
| Concentration | 1mg/ml |
| Formulation | PBS, pH 7.4, containing 0.02% sodium azide as Preservative and 50% Glycerol. |
| Storage | Store at -20°C/1 year |

Application Details

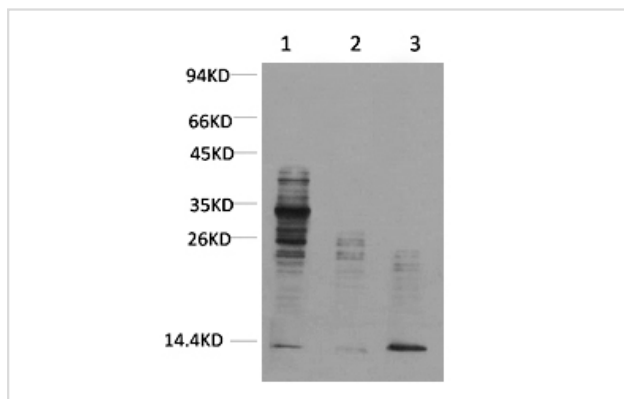
Western blotting: 1:1000-2000

IHC: 1:200-500

Images



Immunohistochemical analysis of paraffin-embedded Human Breast Carcinoma using Acetyl Lysine Monoclonal Antibody.



Western blot analysis of 1) Mouse Brain Tissue, 2) Hela, 3) Hela+TSA Treated using Acetyl Lysine Monoclonal Antibody.

Note: This product is for in vitro research use only and is not intended for use in humans or animals.