

#HW033

# Histone H4K20me3 Polyclonal Antibody



**Catalog:** HW033      100µl      **Orders:** [order@signalwayantibody.com](mailto:order@signalwayantibody.com)  
**Storage:** Store at -20°C or -80°C.      **Support:** [tech@signalwayantibody.com](mailto:tech@signalwayantibody.com)  
 Avoid freeze / thaw cycles.      **Web:** [www.sabbiotech.com](http://www.sabbiotech.com)

Application	Species Reactivity	Source	Molecular Wt.
WB IF IP CHIP	Hu Mu Rt Other(Wide range)	Rabbit Polyclonal Ab	11kDa

**Description:** Antibodies were produced by immunizing rabbits and were purified by antigen affinity-chromatography.

**Application:**

**Immunogen:** A synthetic methylated peptide corresponding to residues surrounding K20 of human histone H4

**Recommended Dilutions:**

WB 1:500 - 1:2000  
 IF 1:50 - 1:200  
 IP 1:50 - 1:200  
 CHIP 1:50 - 1:100

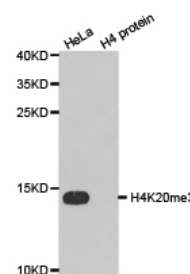
**Formulation:** Buffer: PBS with 0.02% sodium azide, 50% glycerol, pH7.3.

**Synonyms:** H4; H4/n; H4F2; H4FN; FO108; HIST2H4

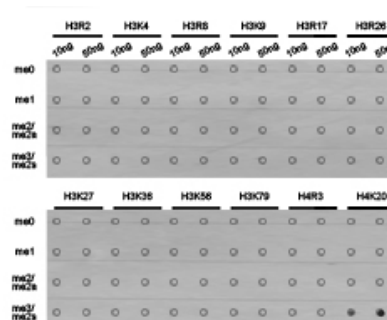
**Accession No.:** Gene ID: 8290 Swiss Prot: Q16695

**Background:**

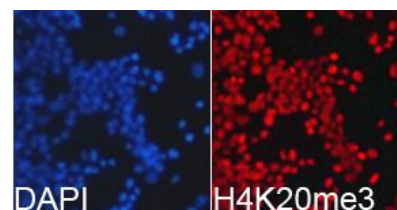
Histones are basic nuclear proteins that are responsible for the nucleosome structure of the chromosomal fiber in eukaryotes. This structure consists of approximately 146 bp of DNA wrapped around a nucleosome, an octamer composed of pairs of each of the four core histones (H2A, H2B, H3, and H4). The chromatin fiber is further compacted through the interaction of a linker histone, H1, with the DNA between the nucleosomes to form higher order chromatin structures. This gene is intronless and encodes a member of the histone H4 family. Transcripts from this gene lack polyA tails; instead, they contain a palindromic termination element. This gene is found in a histone cluster on chromosome 1. This gene is one of four histone genes in the cluster that are duplicated; this record represents the centromeric copy.



Western blot analysis of extracts of HeLa cell line and H4 protein expressed in E.coli., using H4K20me3 antibody.



Dot-blot analysis of all sorts of methylation peptides using H4K20me3 antibody.



Immunofluorescence analysis of 293T cell using H4K20me3 antibody. Blue: DAPI for nuclear staining.

*This product is for in vitro research use only and is not intended for use in humans or animals.*