

## NTN Polyclonal Antibody

Catalog No: #42013



Package Size: #42013-1 50ul #42013-2 100ul

Orders: [order@signalwayantibody.com](mailto:order@signalwayantibody.com)Support: [tech@signalwayantibody.com](mailto:tech@signalwayantibody.com)

## Description

Product Name	NTN Polyclonal Antibody
Host Species	Rabbit
Clonality	Polyclonal
Purification	The antibody was affinity-purified from rabbit antiserum by affinity-chromatography using epitope-specific immunogen.
Applications	WB ELISA
Species Reactivity	Hu
Specificity	NTN Polyclonal Antibody detects endogenous levels of NTN protein.
Immunogen Type	peptide
Immunogen Description	Synthesized peptide derived from the Internal region of human NTN.
Target Name	NTN
Other Names	NRTN; Neurturin
Accession No.	Swiss-Prot: Q99748NCBI Gene ID: 4902
SDS-PAGE MW	22kd
Concentration	1mg/ml
Formulation	Liquid in PBS containing 50% glycerol, 0.5% BSA and 0.02% sodium azide.
Storage	Store at -20°C/1 year

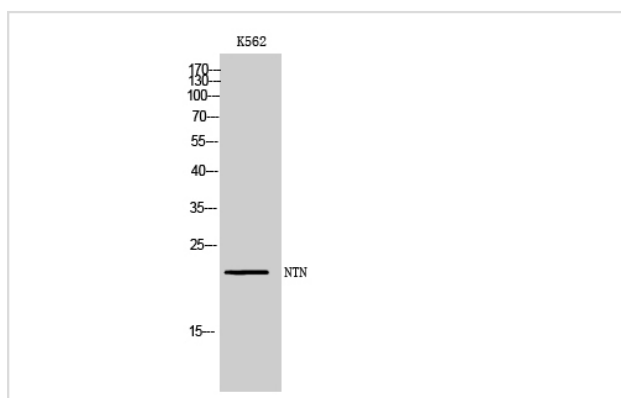
## Application Details

Western Blot: 1/500 - 1/2000.

ELISA: 1/10000.

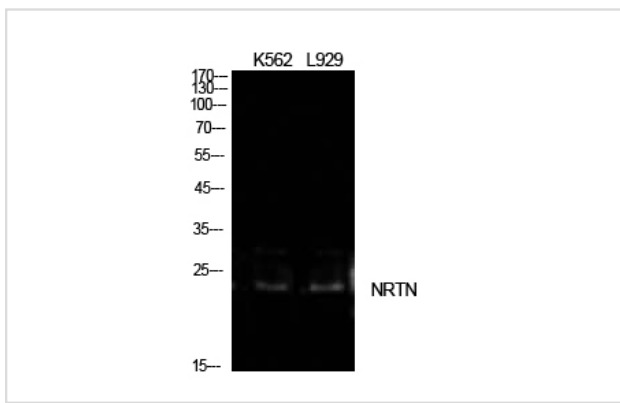
Not yet tested in other applications.

## Images



Western Blot analysis of K562 cells using NTN Polyclonal Antibody

Western Blot analysis of K562 L929 cells using NTN Polyclonal Antibody



Note: This product is for in vitro research use only and is not intended for use in humans or animals.