

CD19 Polyclonal Antibody

Catalog No: #41946



Package Size: #41946-1 50ul #41946-2 100ul

Orders: order@signalwayantibody.comSupport: tech@signalwayantibody.com

Description

Product Name	CD19 Polyclonal Antibody
Host Species	Rabbit
Clonality	Polyclonal
Purification	The antibody was affinity-purified from rabbit antiserum by affinity-chromatography using epitope-specific immunogen.
Applications	WB ELISA
Species Reactivity	Hu
Specificity	CD19 Polyclonal Antibody detects endogenous levels of CD19 protein.
Immunogen Type	peptide
Immunogen Description	Synthesized peptide derived from the Internal region of human CD19.
Target Name	CD19
Other Names	CD19; B-lymphocyte antigen CD19; B-lymphocyte surface antigen B4; Differentiation antigen CD19; T-cell surface antigen Leu-12; CD19
Accession No.	Swiss-Prot: P15391NCBI Gene ID: 930
SDS-PAGE MW	40kd
Concentration	1mg/ml
Formulation	Liquid in PBS containing 50% glycerol, 0.5% BSA and 0.02% sodium azide.
Storage	Store at -20°C/1 year

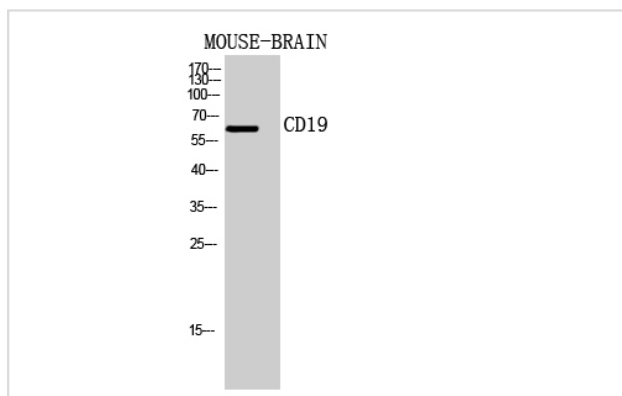
Application Details

Western Blot: 1/500 - 1/2000.

ELISA: 1/10000.

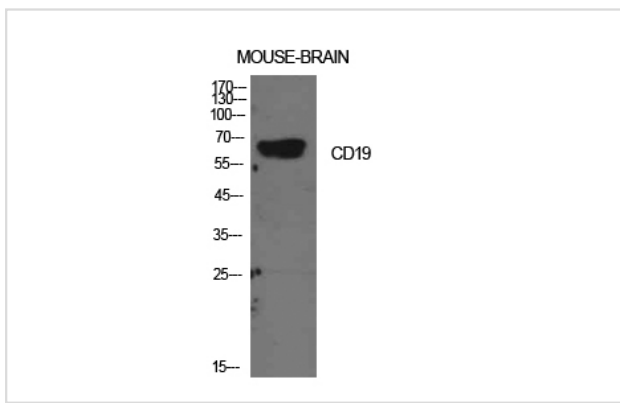
Not yet tested in other applications.

Images



Western Blot analysis of MOUSE-BRAIN cells using CD19 Polyclonal Antibody

Western Blot analysis of mouse brain cells using CD19 Polyclonal Antibody



Note: This product is for in vitro research use only and is not intended for use in humans or animals.