

## AID Polyclonal Antibody

Catalog No: #41932



Package Size: #41932-1 50ul #41932-2 100ul

Orders: [order@signalwayantibody.com](mailto:order@signalwayantibody.com)Support: [tech@signalwayantibody.com](mailto:tech@signalwayantibody.com)

## Description

Product Name	AID Polyclonal Antibody
Host Species	Rabbit
Clonality	Polyclonal
Purification	The antibody was affinity-purified from rabbit antiserum by affinity-chromatography using epitope-specific immunogen.
Applications	WB ELISA
Species Reactivity	Hu Ms Rt
Specificity	AID Polyclonal Antibody detects endogenous levels of AID protein.
Immunogen Type	peptide
Immunogen Description	Synthesized peptide derived from the Internal region of human AID.
Target Name	AID
Other Names	AICDA; AID; Activation-induced cytidine deaminase; Cytidine aminohydrolase
Accession No.	Swiss-Prot: Q9GZX7NCBI Gene ID: 57379
SDS-PAGE MW	42kd
Concentration	1mg/ml
Formulation	Liquid in PBS containing 50% glycerol, 0.5% BSA and 0.02% sodium azide.
Storage	Store at -20°C/1 year

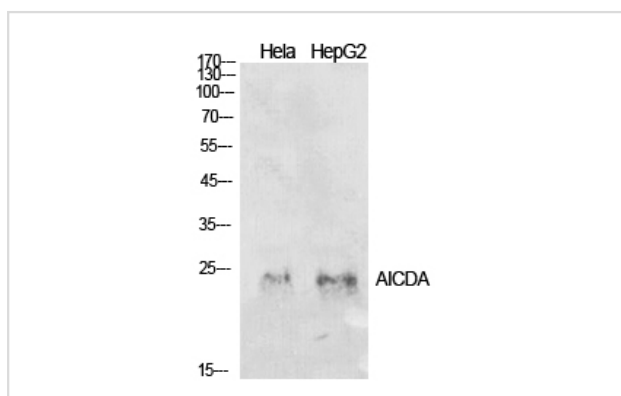
## Application Details

Western Blot: 1/500 - 1/2000.

ELISA: 1/10000.

Not yet tested in other applications.

## Images



Western Blot analysis of HeLa HepG2 cells using AID Polyclonal Antibody

---

Note: This product is for in vitro research use only and is not intended for use in humans or animals.