

PSA Polyclonal Antibody

Catalog No: #41917



Package Size: #41917-1 50ul #41917-2 100ul

Orders: order@signalwayantibody.comSupport: tech@signalwayantibody.com

Description

Product Name	PSA Polyclonal Antibody
Host Species	Rabbit
Clonality	Polyclonal
Purification	The antibody was affinity-purified from rabbit antiserum by affinity-chromatography using epitope-specific immunogen.
Applications	WB ELISA
Species Reactivity	Hu
Specificity	PSA Polyclonal Antibody detects endogenous levels of PSA protein.
Immunogen Type	peptide
Immunogen Description	Synthesized peptide derived from the Internal region of human PSA.
Target Name	PSA
Other Names	KLK3; APS; Prostate-specific antigen; PSA; Gamma-seminoprotein; Seminol; Kallikrein-3; P-30 antigen; Semenogelase
Accession No.	Swiss-Prot: P07288NCBI Gene ID: 354
SDS-PAGE MW	55kd
Concentration	1mg/ml
Formulation	Liquid in PBS containing 50% glycerol, 0.5% BSA and 0.02% sodium azide.
Storage	Store at -20°C/1 year

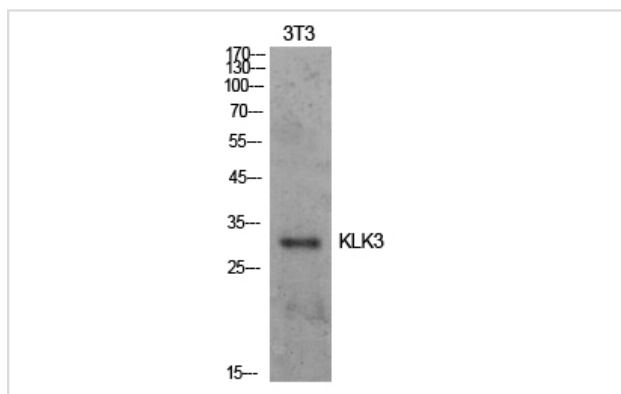
Application Details

Western Blot: 1/500 - 1/2000.

ELISA: 1/10000.

Not yet tested in other applications.

Images



Western Blot analysis of NIH-3T3 cells using PSA Polyclonal Antibody

Note: This product is for in vitro research use only and is not intended for use in humans or animals.