

# Cortactin Polyclonal Antibody

Catalog No: #41905



Package Size: #41905-1 50ul #41905-2 100ul

Orders: [order@signalwayantibody.com](mailto:order@signalwayantibody.com)

Support: [tech@signalwayantibody.com](mailto:tech@signalwayantibody.com)

## Description

Product Name	Cortactin Polyclonal Antibody
Host Species	Rabbit
Clonality	Polyclonal
Purification	The antibody was affinity-purified from rabbit antiserum by affinity-chromatography using epitope-specific immunogen.
Applications	WB ELISA
Species Reactivity	Hu Ms Rt
Specificity	Cortactin Polyclonal Antibody detects endogenous levels of Cortactin protein.
Immunogen Type	peptide
Immunogen Description	Synthesized peptide derived from the Internal region of human Cortactin.
Target Name	Cortactin
Other Names	CTTN; EMS1; Src substrate cortactin; Amplexin; Oncogene EMS1
Accession No.	Swiss-Prot: Q14247NCBI Gene ID: 2017
SDS-PAGE MW	17kd
Concentration	1mg/ml
Formulation	Liquid in PBS containing 50% glycerol, 0.5% BSA and 0.02% sodium azide.
Storage	Store at -20°C/1 year

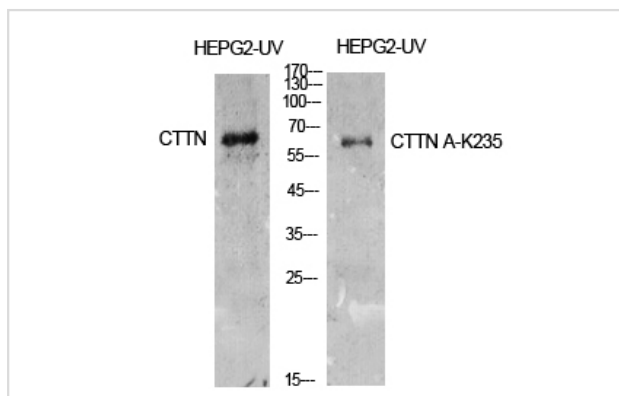
## Application Details

Western Blot: 1/500 - 1/2000.

ELISA: 1/10000.

Not yet tested in other applications.

## Images



Western Blot analysis of HepG2-UV cells using Cortactin Polyclonal Antibody

---

Note: This product is for in vitro research use only and is not intended for use in humans or animals.