

## AR Polyclonal Antibody

Catalog No: #41904



Package Size: #41904-1 50ul #41904-2 100ul

Orders: [order@signalwayantibody.com](mailto:order@signalwayantibody.com)Support: [tech@signalwayantibody.com](mailto:tech@signalwayantibody.com)

## Description

Product Name	AR Polyclonal Antibody
Host Species	Rabbit
Clonality	Polyclonal
Purification	The antibody was affinity-purified from rabbit antiserum by affinity-chromatography using epitope-specific immunogen.
Applications	WB ELISA
Species Reactivity	Hu Ms Rt
Specificity	AR Polyclonal Antibody detects endogenous levels of AR protein.
Immunogen Type	peptide
Immunogen Description	Synthesized peptide derived from the Internal region of human AR.
Target Name	AR
Other Names	AR; DHTR; NR3C4; Androgen receptor; Dihydrotestosterone receptor; Nuclear receptor subfamily 3 group C member 4
Accession No.	Swiss-Prot: P10275NCBI Gene ID: 367
SDS-PAGE MW	180kd
Concentration	1mg/ml
Formulation	Liquid in PBS containing 50% glycerol, 0.5% BSA and 0.02% sodium azide.
Storage	Store at -20°C/1 year

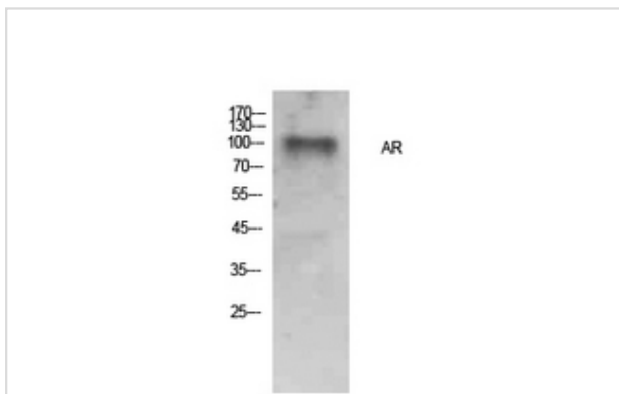
## Application Details

Western Blot: 1/500 - 1/2000.

ELISA: 1/10000.

Not yet tested in other applications.

## Images



Western Blot analysis of HeLa cells using AR Polyclonal Antibody.

---

Note: This product is for in vitro research use only and is not intended for use in humans or animals.