

FAS Polyclonal Antibody

Catalog No: #41895



Package Size: #41895-1 50ul #41895-2 100ul

Orders: order@signalwayantibody.comSupport: tech@signalwayantibody.com

Description

Product Name	FAS Polyclonal Antibody
Host Species	Rabbit
Clonality	Polyclonal
Purification	The antibody was affinity-purified from rabbit antiserum by affinity-chromatography using epitope-specific immunogen.
Applications	WB ELISA
Species Reactivity	Hu
Specificity	FAS Polyclonal Antibody detects endogenous levels of FAS protein.
Immunogen Type	peptide
Immunogen Description	Synthesized peptide derived from the Internal region of human FAS.
Target Name	FAS
Other Names	FAS; APT1; FAS1; TNFRSF6; Tumor necrosis factor receptor superfamily member 6; Apo-1 antigen; Apoptosis-mediating surface antigen FAS; FASLG receptor; CD95
Accession No.	Swiss-Prot: P25445NCBI Gene ID: 355
SDS-PAGE MW	64kd
Concentration	1mg/ml
Formulation	Liquid in PBS containing 50% glycerol, 0.5% BSA and 0.02% sodium azide.
Storage	Store at -20°C/1 year

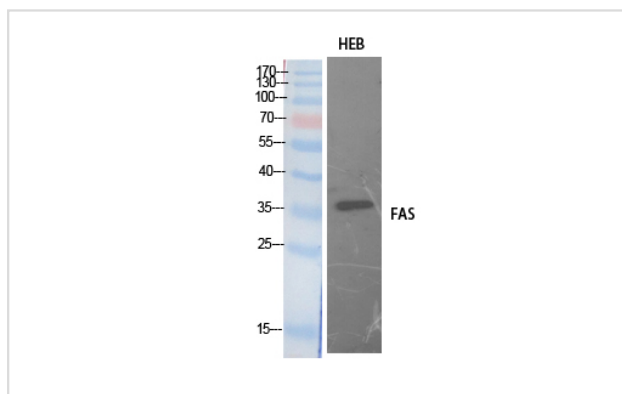
Application Details

Western Blot: 1/500 - 1/2000.

ELISA: 1/20000.

Not yet tested in other applications.

Images



Western Blot analysis of HEB cells using FAS Polyclonal Antibody

Note: This product is for in vitro research use only and is not intended for use in humans or animals.