

SPARC Polyclonal Antibody

Catalog No: #41891

Package Size: #41891-1 50ul #41891-2 100ul

Orders: order@signalwayantibody.comSupport: tech@signalwayantibody.com

Description

Product Name	SPARC Polyclonal Antibody
Host Species	Rabbit
Clonality	Polyclonal
Purification	The antibody was affinity-purified from rabbit antiserum by affinity-chromatography using epitope-specific immunogen.
Applications	WB ELISA
Species Reactivity	Hu Ms Rt
Specificity	SPARC Polyclonal Antibody detects endogenous levels of SPARC protein.
Immunogen Type	peptide
Immunogen Description	Synthesized peptide derived from the Internal region of human SPARC.
Target Name	SPARC
Other Names	SPARC; ON; SPARC; Basement-membrane protein 40; BM-40; Osteonectin; ON; Secreted protein acidic and rich in cysteine
Accession No.	Swiss-Prot: P09486NCBI Gene ID: 6678
SDS-PAGE MW	37kd
Concentration	1mg/ml
Formulation	Liquid in PBS containing 50% glycerol, 0.5% BSA and 0.02% sodium azide.
Storage	Store at -20°C/1 year

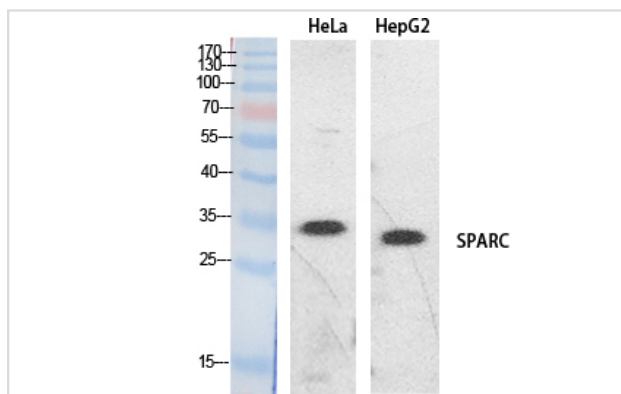
Application Details

Western Blot: 1/500 - 1/2000.

ELISA: 1/20000.

Not yet tested in other applications.

Images



Western Blot analysis of HeLa HepG2 cells using SPARC Polyclonal Antibody

Note: This product is for in vitro research use only and is not intended for use in humans or animals.